

State Board of Education School Report Card for 2002-2003

Pike County

State Board of Education Members

Gov. Bob Riley, Board President
Dr. Ethel Hall, Vice President, District 4
Randy McKinney, District 1
Betty Peters, District 2
Stephanie Bell, District 3
Ella Bell, District 5
David F. Byers, Jr., District 6
Sandra Ray, District 7
Dr. Mary Jane Caylor, District 8
Ed Richardson, Superintendent of Education

Superintendent

Dr. Samuel Mark Bazzell

School Board Members

Rev. Earnest Green
Mr. Wyman Botts
Rev. Herbert Reynolds
Mrs. Linda Steed
Mr. William Greg Price
Mr. Adam Register

Pike County
101 W Love St
Troy, AL 36081-2613
(334)566-1850

Report cards are prepared by the Alabama Department of Education. For more information including a glossary of terms, grading scales, and detailed data, visit the SDE Web Site Accountability Reporting System at: <http://www.alsde.edu/Accountability/preAccountability.asp> School status is based on student assessments given in 2002-2003.

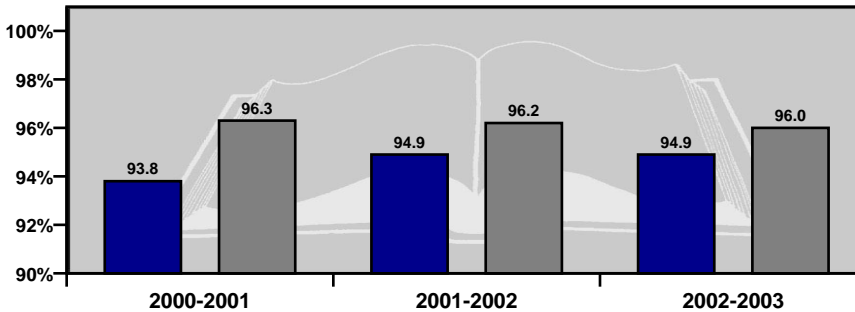
GENERAL INFORMATION

Average Daily Membership

This is the average number of students on attendance rolls during the first 40 days of school.

Year	ADM
2002-2003	2,127.0
2001-2002	2,177.0
2000-2001	2,226.3

■ % System ■ % State



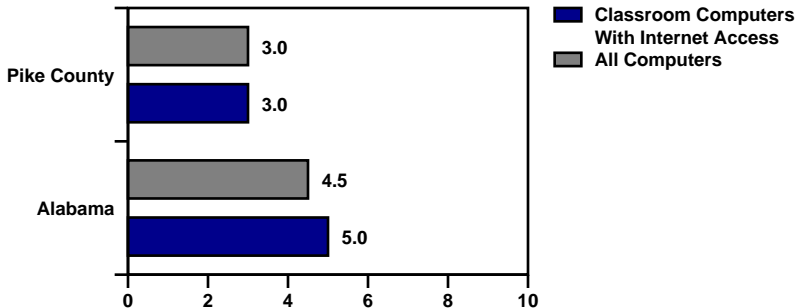
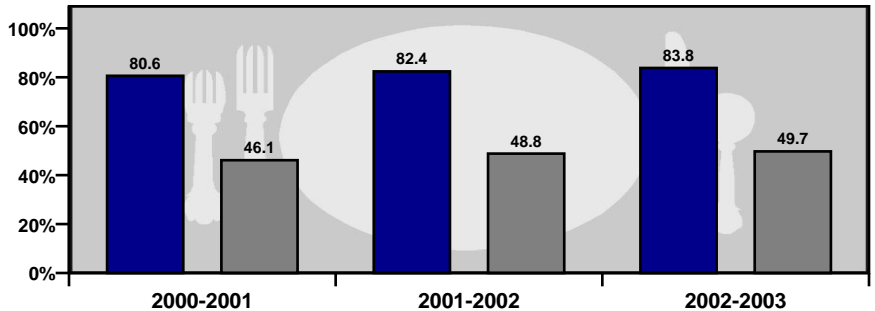
Average Daily Attendance

This is the percent of students that attend school each day.

■ % System ■ % State

Students Eligible for Free or Reduced Price Meals

This is the percent of students that applied for and were approved as reported on the First 40-Day Attendance Report. It is an indicator of poverty.



Technology

Internet access and computer use in schools. A lower number indicates greater student access to technology.

GENERAL INFORMATION

Staffing

Each school is staffed with full- and part-time faculty and staff. In 2002-2003, this school system employed the following professionals.

	System	State
Teachers	142.0	47,613.2
Counselors	5.0	1,695.9
Librarians	5.0	1,359.1
Administrators	9.7	2,689.3
Nurses	2.0	423.9
Instruction Assistants	13.0	6,169.0
Other (certified)	6.2	1,328.4
Support Staff	127.1	34,022.4

Teacher Qualifications

This is the percent of teachers that are teaching core subjects for which they are certified by the state of Alabama.

	System	State
Percent Teaching in Field	96.3%	94.9%

Safety & Discipline

The following chart shows the types of discipline problems that have occurred at this school system and what actions were taken in 2002-2003.

Type of Incident	Number of Incidents Reported	Action Taken		
		Suspension	Expulsion	Sent to Alternative School
Assault	12	8	0	2
Bomb Threat	0	0	0	0
Drug Related	1	0	0	1
Weapon Related	3	1	1	1

Career / Tech Education

These programs are forming partnerships with business and industry to align curriculum with their standards. The goal is to certify all programs to industry standards by 2003. The number indicates the percentage of high school programs that have been certified. The letter grade measures whether or not these programs are on track to meet that goal.

Programs Achieving Business/Industry Certification	2002-2003	
	Rate	Grade
	100.0%	A

Percent of High School Students Enrolled in Career / Tech Classes

This is the percentage of students in grades 9-12 who are enrolled in career and technical education coursework as compared to the overall student population in grades 9-12.

Percent of Students Enrolled in Career / Tech Classes 2002-2003	System	State
	54.1%	55.4%

Percent of Positive Placements in Career / Tech

This represents the percentage of students who completed a career/technical program of studies and took a job in a related field or enrolled in post-secondary studies.

Percent of Positive Placements 2002-2003	System	State
	79.3%	92.0%

STUDENT ACADEMIC PERFORMANCE

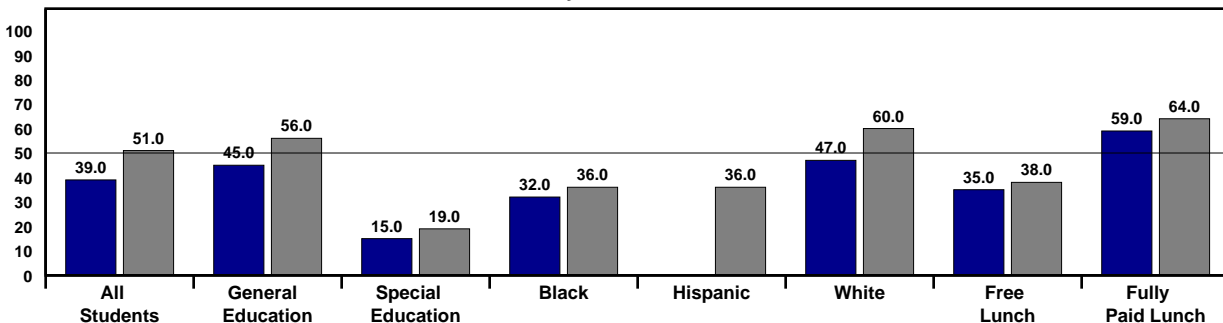
Stanford Achievement Test 2003

The Achievement/Ability Comparison shows the relationship between students' scores on the Stanford Achievement Test and the scores of students of similar ability. This grade is based on the school system average score.

2002-2003	
Score	Grade
5.2	B-

Alabama students in grades 3-8 are given the Stanford Achievement Test each year to measure their academic performance. The table below shows student academic performance in this school system compared to the state for all grades and subjects tested in 2003. The national average for the Stanford Achievement Test, 10th Edition, is 50. The percent of students tested is based on 120-Day Enrollment for the year 2002-2003.

Stanford Achievement Test: Grades 3-8
Average Percentile Across Grades and Subjects
■ System ■ State



		SYSTEM			STATE		
		Percent Tested	Percentile	Grade	Percent Tested	Percentile	Grade
Grade 3	Reading	95.9%	33	D+	97.3%	44	C
	Language	98.2%	42	C	97.8%	47	C
	Math	97.6%	45	C	98.0%	47	C
Grade 4	Reading	99.4%	42	C	97.9%	55	B-
	Language	100.0%	52	C+	98.2%	63	B+
	Math	100.0%	49	C+	98.3%	54	B-
Grade 5	Reading	97.0%	40	C	98.0%	53	C+
	Language	100.0%	43	C	97.8%	53	C+
	Math	100.0%	34	D+	98.3%	46	C
	Science	99.4%	42	C	98.2%	57	B-
Grade 6	Reading	93.8%	40	C	97.1%	47	C
	Language	96.6%	41	C	96.8%	47	C
	Math	97.7%	35	C-	97.4%	46	C
	Soc. Science	96.6%	40	C	97.1%	51	C+
Grade 7	Reading	95.2%	37	C-	95.9%	54	B-
	Language	92.5%	39	C-	95.4%	55	B-
	Math	95.2%	25	D-	96.1%	49	C+
	Science	93.4%	39	C-	96.0%	55	B-
Grade 8	Reading	97.2%	39	C-	95.0%	51	C+
	Language	100.0%	41	C	94.3%	53	C+
	Math	98.3%	32	D+	94.9%	51	C+

STUDENT ACADEMIC PERFORMANCE

ACT Test 2003

Most students planning to attend college take a college entrance exam. One of the best known is the ACT. This table shows the average of the highest ACT score for the senior class in this school system and how it compares to the state average. The Southeastern average is 20.0. The national average is 20.8.

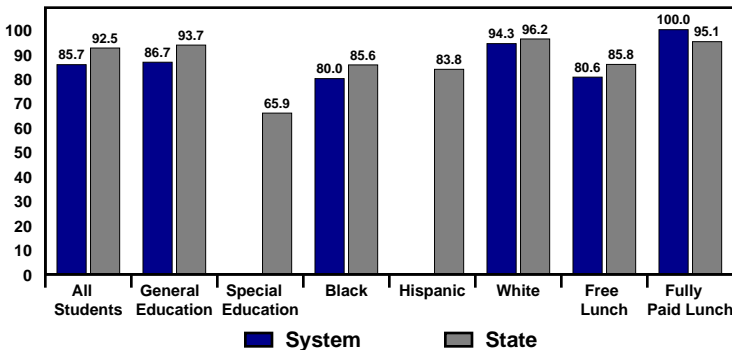
Grade 12	SYSTEM			STATE		
	Number Tested	Average Score	Grade	Number Tested	Average Score	Grade
	59	17	D-	25,281	20.3	C

Alabama High School Graduation Exam 2003

Students must pass the graduation exam to earn a regular diploma. This table shows the percent of 12th graders that passed each subject of this exam as well as the percent that passed all four subjects.

Grade 12	SYSTEM			STATE		
	Number Tested	Percent Passed	Grade	Number Tested	Percent Passed	Grade
Passed All	91	85.7%	C	38,206	92.5%	B
Reading	91	97.8%		38,147	97.3%	
Language	91	95.6%		38,150	96.5%	
Math	91	91.2%		38,147	96.6%	
Science	91	92.3%		38,143	96.7%	

Alabama High School Graduation Exam: 12th Grade
Percent of Students Passing All Subjects



Projected 4-Year Dropout Rate

This table shows the percent of students in the 9th grade in 2001-2002 who are projected to leave school prior to graduation in 2005. The grade compares this school system to the state average.

Please note: This is NOT an annual dropout rate.

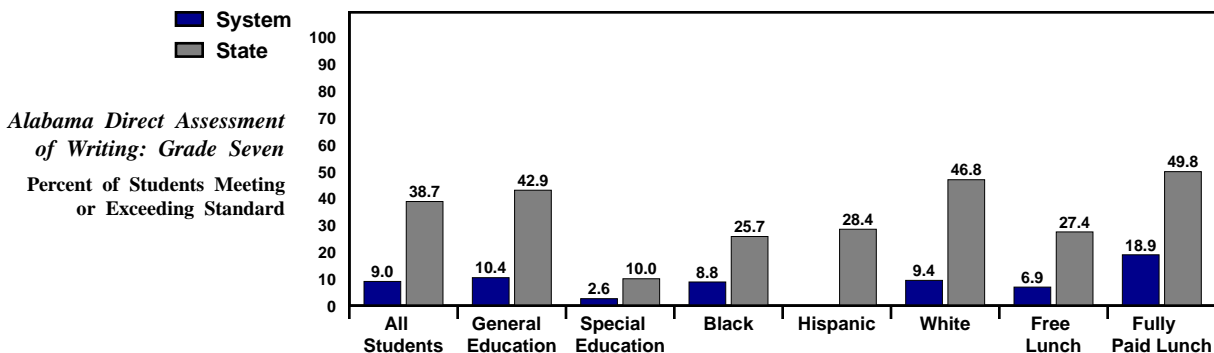
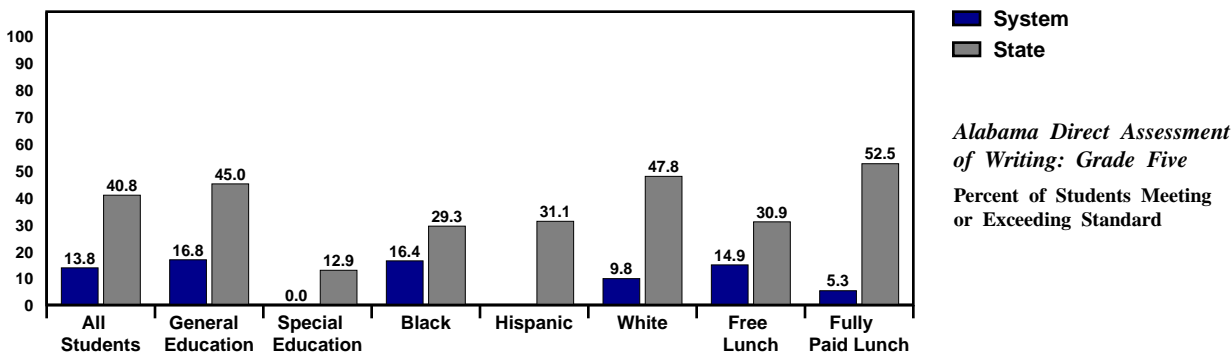
SYSTEM		STATE	
Projected Percent	Grade	Projected Percent	Grade
15.6%	C	14%	C+

STUDENT ACADEMIC PERFORMANCE

Alabama Direct Assessment of Writing 2003

Alabama students in grades five and seven are given the Alabama Direct Assessment of Writing each year to measure their writing skills. This table shows how well students met the performance standard on this test. The percent of students tested is based on 120-Day Enrollment for the year 2002-2003.

		SYSTEM		STATE	
		Grade 5	Grade 7	Grade 5	Grade 7
All Levels	Percent of Students Tested	91.9%	86.3%	94.5%	92.4%
Level 1	Percent Not Meeting Standard	20.1%	26.9%	11.6%	10.8%
Level 2	Percent Partially Meeting Standard	66.0%	64.2%	47.6%	50.5%
Level 3	Percent Meeting Standard	13.2%	9.0%	37.6%	35.9%
Level 4	Percent Exceeding Standard	0.6%	0.0%	3.2%	2.9%
Percent Meeting or Exceeding Standard		13.8%	9.0%	40.8%	38.7%
Levels 3 & 4	Grade	F	F	B+	B

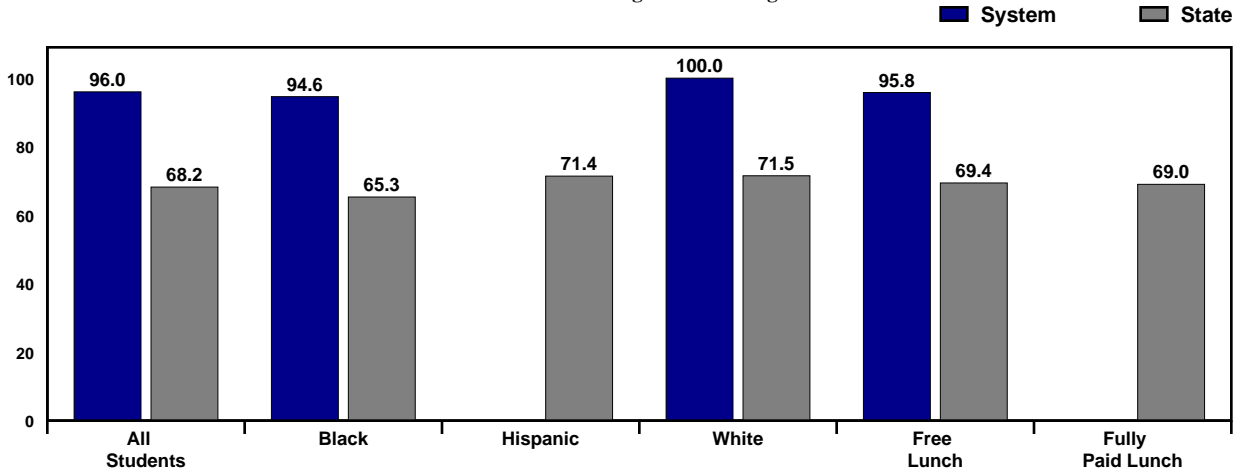


STUDENT ACADEMIC PERFORMANCE

Alabama Alternate Assessment 2003

The Alabama Alternate Assessment is designed for special education students whose Individualized Education Program [IEP] team determines that the student will not participate in the regular state assessments. The Alabama Alternate Assessment is an evaluation of the student's accomplishment of his/her IEP.

Alabama Alternate Assessment:
Percent of Students Meeting or Exceeding Standard



		SYSTEM	STATE
All Levels	Number of Students Tested	50	6,696
Level 1	Percent Not Meeting Standard	0.0%	16.8%
Level 2	Percent Partially Meeting Standard	4.0%	15.0%
Level 3	Percent Meeting Standard	36.0%	36.1%
Level 4	Percent Exceeding Standard	60.0%	32.1%
Percent Meeting or Exceeding Standard		96.0%	68.2%
Levels 3 & 4	Grade	A	C

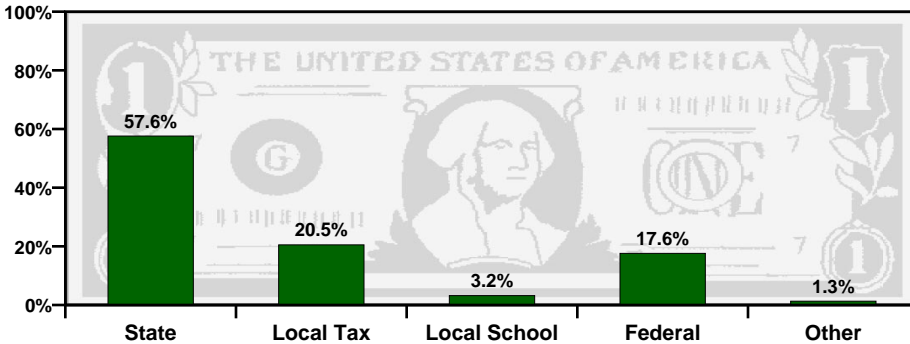
Academic Status Results 2002-2003

The table to the right lists the Academic Status earned by this system based on performance on each of the assessments taken in 2003.

ASSESSMENT	STATUS
Stanford Achievement Test	WATCH with PRIORITY
Alabama Direct Assessment of Writing: Grade 5	WATCH
Alabama Direct Assessment of Writing: Grade 7	WATCH
Alabama High School Graduation Exam	WATCH

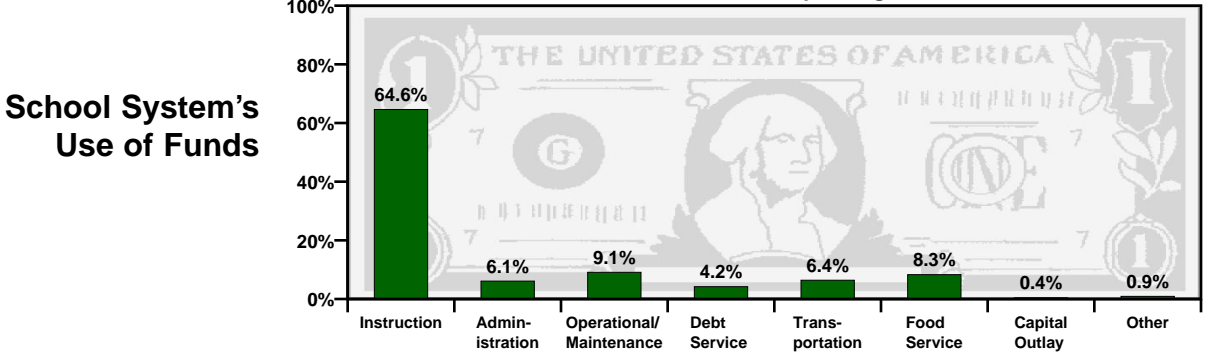
TAXPAYERS' REPORT - FISCAL YEAR 2002

Total 2002-2003 Fiscal Year Revenue = \$16,822,551.76



Sources of School System Revenues

Total 2002-2003 Fiscal Year Spending = \$15,946,888.15



School System's Use of Funds

SOURCE of REVENUE	AMOUNT
Local School Revenue	\$530,966.00
Local Capital Projects Revenue	\$104,075.86
Other Local Revenue (includes local taxes)	\$3,338,735.29
Total Local Revenue	\$3,973,777.15

Local Revenue Breakdown

This table provides a breakdown of local revenues for fiscal year 2002. The revenue from local school projects / activities and the capital projects fund have been itemized to provide a more complete analysis of local fund sources.

Mills Equivalent

This is the total amount of revenue collected locally for public school purposes, divided by the value of one regular system mill of ad valorem tax. The state average is 31.59 mills equivalent.

This System	Grade
50.09	A

Spending per Student

The table below shows the spending per student for this school system. The letter grade compares the system's per student spending to the state, southeast, and nation.

Year	Amount	State	Southeast	Nation
2000-2001	\$6,760.43	B+	B-	C-
2001-2002	\$6,803.03	B	C+	C-

A = Excellent

B = Good

C = Average

D = Poor

F = Fail