



State Board of Education School Report Card for 2004-2005

GW Long Elementary School

State Board of Education Members

Gov. Bob Riley, Board President
Randy McKinney, President Pro Tem, District 1
Betty Peters, District 2
Stephanie Bell, District 3
Dr. Ethel Hall, Vice President Emerita, District 4
Ella Bell, District 5
David F. Byers, Jr., District 6
Sandra Ray, Vice President, District 7
Dr. Mary Jane Caylor, District 8
Joseph B. Morton, Superintendent of Education

Principal

Mr. Bill Robertson

Superintendent

Mr. Phillip Parker

School Board Members

Mr. Braxton Brown Bell Jr
Mr. Larry Ezell
Mrs. Fronnie Culverhouse
Mr. David Adams
Mr. Bobby Don Williams

GW Long Elementary School
2567 Co Rd 60
Skipperville, AL 36374
(334) 774-0021

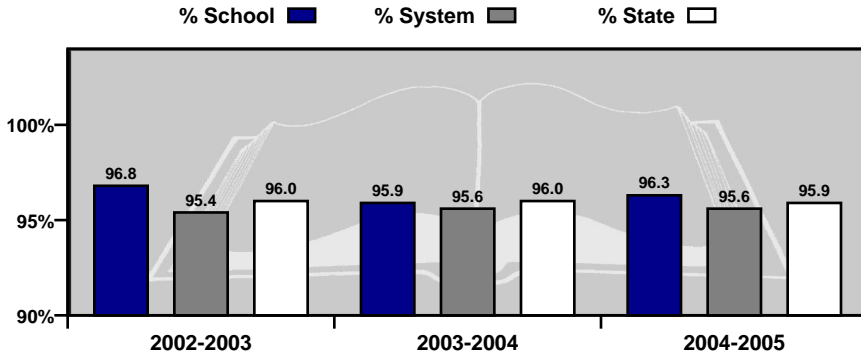
*Report cards are prepared by the Alabama Department of Education.
For more information including a glossary of terms, grading scales, and
detailed data, visit the SDE Web site Accountability Reporting System at:
<http://www.alsde.edu/Accountability/preAccountability.asp>*

GENERAL INFORMATION

Average Daily Membership

This is the average number of students on attendance rolls during the first 40 days of school.

Year	ADM
2004-2005	391.6
2003-2004	366.3
2002-2003	371.2

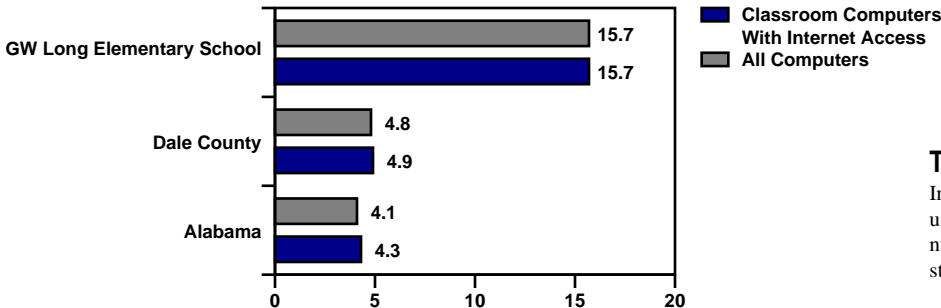
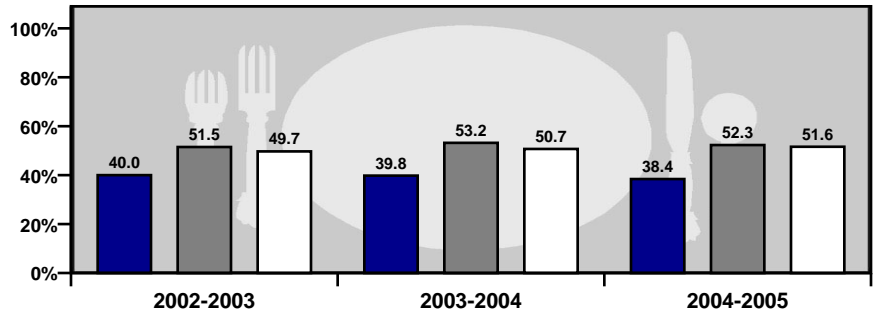


Average Daily Attendance

This is the percent of students that attend school each day.

Students Eligible for Free or Reduced Price Meals

This is the percent of students that applied for and were approved as reported on the First 40-Day Attendance Report. It is an indicator of poverty.



Technology

Internet access and computer use in schools. A lower number indicates greater student access to technology.

GENERAL INFORMATION

Teacher Qualifications

This table shows the percentage of teachers holding each level of certification as issued by the Alabama Department of Education for this school in 2004–2005.

6-Year (Class AA) through Doctorate	Master's Degree (Class A)	Bachelor's Degree (Class B)	Alternative	Emergency
4.3%	52.2%	43.5%	0.0%	0.0%

Percentage of All Elementary and Secondary Teachers with Alternative or Emergency Certification	0.0%
---	------

Staffing

Each school is staffed with full- and part-time faculty and staff. In 2004-2005, this school employed the following professionals.

	School	System	State
Teachers	23.2	172.2	47,558
Counselors	1.0	4.7	1,694
Librarians	1.0	6.0	1,361
Administrators	1.0	9.3	2,669
Nurses	0.0	1.0	648
Instruction Assistants	0.0	13.0	6,459
Other (certified)	0.0	4.5	1,694
Support Staff	2.0	114.3	34,379

Safety & Discipline

The following table shows the types of discipline problems that have occurred at this school and what actions were taken in 2004-2005.

Type of Incident	Number of Incidents Reported	Action Taken		
		Suspension	Expulsion	Sent to Alternative School
Assault	0	0	0	0
Bomb Threat	0	0	0	0
Drug Related	0	0	0	0
Weapon Related	0	0	0	0

As required by federal law, students must be allowed to transfer to another school if their school is identified as persistently dangerous.

Is this a transfer option school? **NO**

GENERAL INFORMATION

Highly Qualified Teachers

This is the percent of teachers that are teaching and the percent of classes taught in a core subject for which the teacher is highly qualified by the State of Alabama as required by the federal legislation known as: No Child Left Behind.

CLASSES	Total Classes		Current Percentage Taught By Highly Qualified Teachers		Current Percentage Not Taught By Highly Qualified Teachers	
	2003-2004	2004-2005	2003-2004	2004-2005	2003-2004	2004-2005
SCHOOL	2003-2004	2004-2005	2003-2004	2004-2005	2003-2004	2004-2005
Elementary Classes	No Data	73	No Data	94.52	No Data	5.48
Secondary Classes	No Data	No Data	No Data	No Data	No Data	No Data
TOTAL CLASSES	90	73	77.78	94.52	22.22	5.48
SYSTEM	2003-2004	2004-2005	2003-2004	2004-2005	2003-2004	2004-2005
Elementary Classes	No Data	322	No Data	97.20	No Data	2.80
Secondary Classes	No Data	247	No Data	83.00	No Data	17.00
TOTAL CLASSES	517	569	88.78	91.04	11.22	8.96
STATE	2003-2004	2004-2005	2003-2004	2004-2005	2003-2004	2004-2005
Elementary Classes	No Data	86,833	No Data	83.39	No Data	16.61
Secondary Classes	No Data	64,682	No Data	79.21	No Data	20.79
TOTAL CLASSES	140,966	151,515	76.70	81.60	23.30	18.40

TEACHERS	Total Teachers		Current Percentage Highly Qualified Teachers		Current Percentage Not Highly Qualified Teachers	
	2003-2004	2004-2005	2003-2004	2004-2005	2003-2004	2004-2005
SCHOOL	2003-2004	2004-2005	2003-2004	2004-2005	2003-2004	2004-2005
Elementary Teachers	No Data	22	No Data	95.45	No Data	4.55
Secondary Teachers	No Data	No Data	No Data	No Data	No Data	No Data
TOTAL TEACHERS	20	22	75.00	95.45	25.00	4.55
SYSTEM	2003-2004	2004-2005	2003-2004	2004-2005	2003-2004	2004-2005
Elementary Teachers	No Data	99	No Data	96.97	No Data	3.03
Secondary Teachers	No Data	73	No Data	69.86	No Data	30.14
TOTAL TEACHERS	142	172	85.21	85.47	14.79	14.53
STATE	2003-2004	2004-2005	2003-2004	2004-2005	2003-2004	2004-2005
Elementary Teachers	No Data	35,472	No Data	80.90	No Data	19.10
Secondary Teachers	No Data	15,017	No Data	72.63	No Data	27.37
TOTAL TEACHERS	35,530	50,489	75.10	78.44	24.90	21.56

High Quality Professional Development							
Total Surveyed		Received High Quality Professional Development		Did Not Receive High Quality Professional Development		PCT With Professional Development	
2003-04	2004-05	2003-04	2004-05	2003-04	2004-05	2003-04	2004-05
N/D	20	N/D	20	N/D	0	N/D	100.00

Instructional Paraprofessionals in Title I-Funded Schools							
Total Instructional Paraprofessionals		Total Qualified		Total Not Qualified		PCT Qualified	
2003-04	2004-05	2003-04	2004-05	2003-04	2004-05	2003-04	2004-05
1	1	1	1	0	0	100.00	100.00

Adequate Yearly Progress Status for 2005-2006 Based on School Year 2004-2005 Data

State Accountability in Alabama is based on the federal law known as the “No Child Left Behind” Act (NCLB) of 2001. NCLB uses the term Adequate Yearly Progress (AYP) to describe whether a school or system has met its annual accountability goals.

COMPONENTS OF AYP

1. Annual Goals for Reading and Mathematics
 - Percentage of students scoring proficient or higher
2. Participation Rate
 - Percentage of students participating in assessments
3. Indicators Affecting Academic Proficiency
 - Attendance
 - Drop-out Rate

ASSESSMENTS USED IN DETERMINING AYP

- Alabama Reading and Mathematics Test (ARMT)
 - Reading: Grades 3–8
 - Mathematics: Grades 3–8
- Alabama High School Graduation Exam (AHSGE)
 - Reading: Grade 11
 - Mathematics: Grade 11
- Alabama Alternate Assessment (AAA)
 - Reading: Grades 3–8 and 11
 - Mathematics: Grades 3–8 and 11

For more detail on the Alabama Accountability System, please reference the Accountability Interpretive Guide which can be found on the SDE Web site:

<http://www.alsde.edu/Accountability/preAccountability.asp>

Select the Accountability Reporting option on the home page. Then request the School Year: 2004-2005 Report: 2005 Interpretive Guide for State Accountability

STATE ACCOUNTABILITY

Adequate Yearly Progress Status for 2005-2006

Based on School Year 2004-2005 Data

2005–2006 AYP Status: Made AYP

School Improvement Status: Not in School Improvement

This School met 13 AYP Goals out of 13 (100.00%)

READING

2005–2006 AYP Status: Made AYP

Reading School Improvement Status: Not in School Improvement

Student Group	Percent Participation Goal = 95.00%	Met Participation Goal	Proficiency Index Goal = 0.00	Met Proficiency Goal*
All Students	100	Yes	14.62	Yes
Special Education	100	NA	-30.65	NA
American Indian/Alaskan	100	NA	~	NA
Asian/Pacific Islander	No Data	No Data	No Data	No Data
Black	100	NA	2.31	NA
Hispanic	No Data	No Data	No Data	No Data
White	100	Yes	16.12	Yes
Limited-English Proficient	No Data	No Data	No Data	No Data
Free/Reduced Meals	100	Yes	5.40	Yes

MATHEMATICS

2005–2006 AYP Status: Made AYP

Mathematics School Improvement Status: Not in School Improvement

Student Group	Percent Participation Goal = 95.00%	Met Participation Goal	Proficiency Index Goal = 0.00	Met Proficiency Goal*
All Students	100	Yes	24.22	Yes
Special Education	100	NA	-42.18	NA
American Indian/Alaskan	100	NA	~	NA
Asian/Pacific Islander	No Data	No Data	No Data	No Data
Black	100	NA	15.50	NA
Hispanic	No Data	No Data	No Data	No Data
White	100	Yes	25.43	Yes
Limited-English Proficient	No Data	No Data	No Data	No Data
Free/Reduced Meals	100	Yes	11.93	Yes

Additional Academic Indicators

Student Group	Attendance Rate Goal = 95.00%	Attendance Rate Previous Year	Met Attendance AYP*	Four-Year Projected Dropout Rate Goal = 10.00	Four-Year Projected Dropout Rate Previous Year	Met Four-Year Projected Dropout AYP**
All Students	96.34	96.08	Yes	N/A	N/A	N/A

~ Not reported, less than 10 students (protects confidentiality).
 NA = Not in AYP, less than 40 students (ensures reliability).

* AYP is met if the goal is met or the goal is within the confidence interval (ensures reliability).
 ** AYP is met if the goal is met or there is improvement from the previous year.

STUDENT ACADEMIC PERFORMANCE

		READING											
		SCHOOL						SYSTEM					
		Level 1	Level 2	Level 3	Level 4	Level 1	Level 2	Level 3	Level 4	Level 1	Level 2	Level 3	Level 4
		Number Tested	Percent Tested	Percent Not Meeting Standard	Percent Partially Meeting Standard	Percent Meeting Standard	Percent Exceeding Standard	Number Tested	Percent Tested	Percent Not Meeting Standard	Percent Partially Meeting Standard	Percent Meeting Standard	Percent Exceeding Standard
Grade 3													
All Students	45	100.00	0.00	13.33	40.00	46.67	204	99.51	0.98	19.12	43.14	36.76	
Special Education	***	***	***	***	***	***	14	100.00	14.29	42.86	28.57	14.29	
American Indian / Alaskan	N/A	N/A	N/A	N/A	N/A	N/A	***	***	***	***	***	***	
Asian / Pacific Islander	N/A	N/A	N/A	N/A	N/A	N/A	***	***	***	***	***	***	
Black	***	***	***	***	***	***	39	100.00	2.56	23.08	56.41	17.95	
Hispanic	N/A	N/A	N/A	N/A	N/A	N/A	***	***	***	***	***	***	
White	44	100.00	0.00	13.64	38.64	47.73	160	99.38	0.63	17.50	40.63	41.25	
Male	30	100.00	0.00	13.33	43.33	43.33	104	99.05	1.92	19.23	44.23	34.62	
Female	15	100.00	0.00	13.33	33.33	53.33	100	100.00	0.00	19.00	42.00	39.00	
Free / Reduced Meals	18	100.00	0.00	22.22	44.44	33.33	122	99.19	1.64	24.59	45.90	27.87	
Limited-English Proficient	N/A	N/A	N/A	N/A	N/A	N/A	***	***	***	***	***	***	
Migrant	N/A	N/A	N/A	N/A	N/A	N/A	N/A	N/A	N/A	N/A	N/A	N/A	
Grade 4													
All Students	50	100.00	2.00	12.00	42.00	44.00	220	97.78	0.45	20.00	34.09	45.45	
Special Education	***	***	***	***	***	***	14	93.33	7.14	64.29	28.57	0.00	
American Indian / Alaskan	***	***	***	***	***	***	***	***	***	***	***	***	
Asian / Pacific Islander	N/A	N/A	N/A	N/A	N/A	N/A	N/A	N/A	N/A	N/A	N/A	N/A	
Black	***	***	***	***	***	***	35	100.00	0.00	25.71	25.71	48.57	
Hispanic	N/A	N/A	N/A	N/A	N/A	N/A	***	***	***	***	***	***	
White	47	100.00	2.13	10.64	42.55	44.68	180	97.83	0.56	18.89	35.56	45.00	
Male	24	100.00	4.17	12.50	41.67	41.67	92	97.87	1.09	19.57	34.78	44.57	
Female	26	100.00	0.00	11.54	42.31	46.15	128	97.71	0.00	20.31	33.59	46.09	
Free / Reduced Meals	14	100.00	0.00	14.29	28.57	57.14	115	96.64	0.00	25.22	33.91	40.87	
Limited-English Proficient	N/A	N/A	N/A	N/A	N/A	N/A	N/A	N/A	N/A	N/A	N/A	N/A	
Migrant	N/A	N/A	N/A	N/A	N/A	N/A	N/A	N/A	N/A	N/A	N/A	N/A	
Grade 5													
All Students	54	98.18	3.70	12.96	37.04	46.30	213	97.71	1.41	20.66	39.91	38.03	
Special Education	***	***	***	***	***	***	15	93.75	13.33	60.00	13.33	13.33	
American Indian / Alaskan	N/A	N/A	N/A	N/A	N/A	N/A	N/A	N/A	N/A	N/A	N/A	N/A	
Asian / Pacific Islander	N/A	N/A	N/A	N/A	N/A	N/A	N/A	N/A	N/A	N/A	N/A	N/A	
Black	***	***	***	***	***	***	46	100.00	2.17	30.43	50.00	17.39	
Hispanic	N/A	N/A	N/A	N/A	N/A	N/A	N/A	N/A	N/A	N/A	N/A	N/A	
White	45	97.83	2.22	11.11	35.56	51.11	167	97.66	1.20	17.96	37.13	43.71	
Male	32	100.00	6.25	15.63	31.25	46.88	122	97.60	1.64	24.59	41.80	31.97	
Female	22	95.65	0.00	9.09	45.45	45.45	91	97.85	1.10	15.38	37.36	46.15	
Free / Reduced Meals	22	100.00	9.09	13.64	54.55	22.73	127	98.45	2.36	25.20	48.03	24.41	
Limited-English Proficient	N/A	N/A	N/A	N/A	N/A	N/A	N/A	N/A	N/A	N/A	N/A	N/A	
Migrant	N/A	N/A	N/A	N/A	N/A	N/A	N/A	N/A	N/A	N/A	N/A	N/A	

*** = Less than 10 students tested

N/D = No Data Available

N/A = Not Applicable

N/R = Not Reported

STUDENT ACADEMIC PERFORMANCE

MATHEMATICS

SCHOOL						SYSTEM					
		Level 1	Level 2	Level 3	Level 4			Level 1	Level 2	Level 3	Level 4
Number Tested	Percent Tested	Percent Not Meeting Standard	Percent Partially Meeting Standard	Percent Meeting Standard	Percent Exceeding Standard	Number Tested	Percent Tested	Percent Not Meeting Standard	Percent Partially Meeting Standard	Percent Meeting Standard	Percent Exceeding Standard
45	100.00	2.22	20.00	24.44	53.33	204	99.51	4.90	30.39	33.82	30.88
***	***	***	***	***	***	14	100.00	35.71	21.43	35.71	7.14
N/A	N/A	N/A	N/A	N/A	N/A	***	***	***	***	***	***
N/A	N/A	N/A	N/A	N/A	N/A	***	***	***	***	***	***
***	***	***	***	***	***	39	100.00	15.38	43.59	15.38	25.64
N/A	N/A	N/A	N/A	N/A	N/A	***	***	***	***	***	***
44	100.00	2.27	20.45	25.00	52.27	160	99.38	2.50	27.50	38.13	31.88
30	100.00	3.33	20.00	26.67	50.00	104	99.05	6.73	26.92	37.50	28.85
15	100.00	0.00	20.00	20.00	60.00	100	100.00	3.00	34.00	30.00	33.00
18	100.00	5.56	27.78	22.22	44.44	122	99.19	8.20	36.89	31.15	23.77
N/A	N/A	N/A	N/A	N/A	N/A	***	***	***	***	***	***
N/A	N/A	N/A	N/A	N/A	N/A	N/A	N/A	N/A	N/A	N/A	N/A
50	100.00	2.00	26.00	46.00	26.00	220	97.78	1.36	26.82	37.73	34.09
***	***	***	***	***	***	13	86.67	15.38	46.15	38.46	0.00
***	***	***	***	***	***	***	***	***	***	***	***
N/A	N/A	N/A	N/A	N/A	N/A	N/A	N/A	N/A	N/A	N/A	N/A
***	***	***	***	***	***	35	100.00	2.86	25.71	34.29	37.14
N/A	N/A	N/A	N/A	N/A	N/A	***	***	***	***	***	***
47	100.00	2.13	25.53	46.81	25.53	180	97.83	1.11	27.22	37.78	33.89
24	100.00	4.17	29.17	33.33	33.33	92	97.87	2.17	25.00	31.52	41.30
26	100.00	0.00	23.08	57.69	19.23	128	97.71	0.78	28.13	42.19	28.91
14	100.00	0.00	35.71	42.86	21.43	115	96.64	1.74	32.17	35.65	30.43
N/A	N/A	N/A	N/A	N/A	N/A	N/A	N/A	N/A	N/A	N/A	N/A
N/A	N/A	N/A	N/A	N/A	N/A	N/A	N/A	N/A	N/A	N/A	N/A
54	98.18	0.00	16.67	44.44	38.89	213	97.71	0.00	26.76	46.01	27.23
***	***	***	***	***	***	15	93.75	0.00	80.00	20.00	0.00
N/A	N/A	N/A	N/A	N/A	N/A	N/A	N/A	N/A	N/A	N/A	N/A
N/A	N/A	N/A	N/A	N/A	N/A	N/A	N/A	N/A	N/A	N/A	N/A
***	***	***	***	***	***	46	100.00	0.00	41.30	43.48	15.22
N/A	N/A	N/A	N/A	N/A	N/A	N/A	N/A	N/A	N/A	N/A	N/A
45	97.83	0.00	11.11	44.44	44.44	167	97.66	0.00	22.75	46.71	30.54
32	100.00	0.00	21.88	34.38	43.75	122	97.60	0.00	31.15	42.62	26.23
22	95.65	0.00	9.09	59.09	31.82	91	97.85	0.00	20.88	50.55	28.57
22	100.00	0.00	27.27	50.00	22.73	127	98.45	0.00	35.43	46.46	18.11
N/A	N/A	N/A	N/A	N/A	N/A	N/A	N/A	N/A	N/A	N/A	N/A
N/A	N/A	N/A	N/A	N/A	N/A	N/A	N/A	N/A	N/A	N/A	N/A

ALABAMA READING AND MATHEMATICS TEST

The Alabama Reading and Mathematics Test provides an assessment of students' mastery of the content contained in the Alabama Course of Study. The Reading and Mathematics Test was given in grades three through eight.

*** = Less than 10 students tested

N/D = No Data Available

N/A = Not Applicable

N/R = Not Reported

STUDENT ACADEMIC PERFORMANCE

		READING											
		SCHOOL						SYSTEM					
		Level 1	Level 2	Level 3	Level 4	Level 1	Level 2	Level 3	Level 4				
Grade	Number Tested	Percent Tested	Percent Not Meeting Standard	Percent Partially Meeting Standard	Percent Meeting Standard	Percent Exceeding Standard	Number Tested	Percent Tested	Percent Not Meeting Standard	Percent Partially Meeting Standard	Percent Meeting Standard	Percent Exceeding Standard	
Grade 6													
All Students	59	100.00	0.00	10.17	15.25	74.58	228	98.70	0.88	12.72	29.82	56.58	
Special Education	***	***	***	***	***	***	21	95.45	9.52	61.90	19.05	9.52	
American Indian / Alaskan	N/A	N/A	N/A	N/A	N/A	N/A	***	***	***	***	***	***	
Asian / Pacific Islander	N/A	N/A	N/A	N/A	N/A	N/A	N/A	N/A	N/A	N/A	N/A	N/A	
Black	***	***	***	***	***	***	38	100.00	2.63	18.42	44.74	34.21	
Hispanic	N/A	N/A	N/A	N/A	N/A	N/A	N/A	N/A	N/A	N/A	N/A	N/A	
White	54	100.00	0.00	9.26	14.81	75.93	187	98.42	0.53	11.76	27.27	60.43	
Male	33	100.00	0.00	15.15	15.15	69.70	121	99.18	1.65	14.88	32.23	51.24	
Female	26	100.00	0.00	3.85	15.38	80.77	107	98.17	0.00	10.28	27.10	62.62	
Free / Reduced Meals	18	100.00	0.00	27.78	11.11	61.11	115	99.14	0.87	21.74	33.04	44.35	
Limited-English Proficient	N/A	N/A	N/A	N/A	N/A	N/A	N/A	N/A	N/A	N/A	N/A	N/A	
Migrant	N/A	N/A	N/A	N/A	N/A	N/A	N/A	N/A	N/A	N/A	N/A	N/A	
Grade 7													
All Students	N/A	N/A	N/A	N/A	N/A	N/A	209	96.76	1.44	17.22	39.23	42.11	
Special Education	N/A	N/A	N/A	N/A	N/A	N/A	22	91.67	13.64	63.64	9.09	13.64	
American Indian / Alaskan	N/A	N/A	N/A	N/A	N/A	N/A	N/A	N/A	N/A	N/A	N/A	N/A	
Asian / Pacific Islander	N/A	N/A	N/A	N/A	N/A	N/A	***	***	***	***	***	***	
Black	N/A	N/A	N/A	N/A	N/A	N/A	46	95.83	4.35	28.26	45.65	21.74	
Hispanic	N/A	N/A	N/A	N/A	N/A	N/A	***	***	***	***	***	***	
White	N/A	N/A	N/A	N/A	N/A	N/A	160	96.97	0.63	14.38	36.25	48.75	
Male	N/A	N/A	N/A	N/A	N/A	N/A	113	96.58	1.77	23.01	43.36	31.86	
Female	N/A	N/A	N/A	N/A	N/A	N/A	96	96.97	1.04	10.42	34.38	54.17	
Free / Reduced Meals	N/A	N/A	N/A	N/A	N/A	N/A	123	96.09	2.44	21.95	43.09	32.52	
Limited-English Proficient	N/A	N/A	N/A	N/A	N/A	N/A	N/A	N/A	N/A	N/A	N/A	N/A	
Migrant	N/A	N/A	N/A	N/A	N/A	N/A	N/A	N/A	N/A	N/A	N/A	N/A	
Grade 8													
All Students	N/A	N/A	N/A	N/A	N/A	N/A	224	98.25	0.45	26.79	33.04	39.73	
Special Education	N/A	N/A	N/A	N/A	N/A	N/A	26	100.00	3.85	80.77	11.54	3.85	
American Indian / Alaskan	N/A	N/A	N/A	N/A	N/A	N/A	***	***	***	***	***	***	
Asian / Pacific Islander	N/A	N/A	N/A	N/A	N/A	N/A	N/A	N/A	N/A	N/A	N/A	N/A	
Black	N/A	N/A	N/A	N/A	N/A	N/A	35	97.22	0.00	31.43	45.71	22.86	
Hispanic	N/A	N/A	N/A	N/A	N/A	N/A	N/A	N/A	N/A	N/A	N/A	N/A	
White	N/A	N/A	N/A	N/A	N/A	N/A	186	98.41	0.54	26.34	30.65	42.47	
Male	N/A	N/A	N/A	N/A	N/A	N/A	126	100.00	0.79	36.51	29.37	33.33	
Female	N/A	N/A	N/A	N/A	N/A	N/A	98	96.08	0.00	14.29	37.76	47.96	
Free / Reduced Meals	N/A	N/A	N/A	N/A	N/A	N/A	115	99.14	0.00	34.78	34.78	30.43	
Limited-English Proficient	N/A	N/A	N/A	N/A	N/A	N/A	N/A	N/A	N/A	N/A	N/A	N/A	
Migrant	N/A	N/A	N/A	N/A	N/A	N/A	N/A	N/A	N/A	N/A	N/A	N/A	

*** = Less than 10 students tested

N/D = No Data Available

N/A = Not Applicable

N/R = Not Reported

STUDENT ACADEMIC PERFORMANCE

MATHEMATICS

SCHOOL						SYSTEM					
		Level 1	Level 2	Level 3	Level 4			Level 1	Level 2	Level 3	Level 4
Number Tested	Percent Tested	Percent Not Meeting Standard	Percent Partially Meeting Standard	Percent Meeting Standard	Percent Exceeding Standard	Number Tested	Percent Tested	Percent Not Meeting Standard	Percent Partially Meeting Standard	Percent Meeting Standard	Percent Exceeding Standard
59	100.00	0.00	18.64	42.37	38.98	228	98.70	0.44	21.93	47.37	30.26
***	***	***	***	***	***	21	95.45	4.76	71.43	23.81	0.00
N/A	N/A	N/A	N/A	N/A	N/A	***	***	***	***	***	***
N/A	N/A	N/A	N/A	N/A	N/A	N/A	N/A	N/A	N/A	N/A	N/A
***	***	***	***	***	***	38	100.00	2.63	42.11	39.47	15.79
N/A	N/A	N/A	N/A	N/A	N/A	N/A	N/A	N/A	N/A	N/A	N/A
54	100.00	0.00	16.67	44.44	38.89	187	98.42	0.00	18.18	48.66	33.16
33	100.00	0.00	27.27	45.45	27.27	121	99.18	0.00	23.14	48.76	28.10
26	100.00	0.00	7.69	38.46	53.85	107	98.17	0.93	20.56	45.79	32.71
18	100.00	0.00	33.33	44.44	22.22	115	99.14	0.87	30.43	54.78	13.91
N/A	N/A	N/A	N/A	N/A	N/A	N/A	N/A	N/A	N/A	N/A	N/A
N/A	N/A	N/A	N/A	N/A	N/A	N/A	N/A	N/A	N/A	N/A	N/A
N/A	N/A	N/A	N/A	N/A	N/A	210	97.22	0.00	34.29	45.71	20.00
N/A	N/A	N/A	N/A	N/A	N/A	22	91.67	0.00	86.36	13.64	0.00
N/A	N/A	N/A	N/A	N/A	N/A	N/A	N/A	N/A	N/A	N/A	N/A
N/A	N/A	N/A	N/A	N/A	N/A	***	***	***	***	***	***
N/A	N/A	N/A	N/A	N/A	N/A	46	95.83	0.00	52.17	39.13	8.70
N/A	N/A	N/A	N/A	N/A	N/A	***	***	***	***	***	***
N/A	N/A	N/A	N/A	N/A	N/A	161	97.58	0.00	28.57	47.83	23.60
N/A	N/A	N/A	N/A	N/A	N/A	113	96.58	0.00	35.40	46.02	18.58
N/A	N/A	N/A	N/A	N/A	N/A	97	97.98	0.00	32.99	45.36	21.65
N/A	N/A	N/A	N/A	N/A	N/A	124	96.88	0.00	45.16	42.74	12.10
N/A	N/A	N/A	N/A	N/A	N/A	N/A	N/A	N/A	N/A	N/A	N/A
N/A	N/A	N/A	N/A	N/A	N/A	N/A	N/A	N/A	N/A	N/A	N/A
N/A	N/A	N/A	N/A	N/A	N/A	223	97.81	0.00	28.70	48.43	22.87
N/A	N/A	N/A	N/A	N/A	N/A	25	96.15	0.00	84.00	16.00	0.00
N/A	N/A	N/A	N/A	N/A	N/A	***	***	***	***	***	***
N/A	N/A	N/A	N/A	N/A	N/A	N/A	N/A	N/A	N/A	N/A	N/A
N/A	N/A	N/A	N/A	N/A	N/A	35	97.22	0.00	42.86	40.00	17.14
N/A	N/A	N/A	N/A	N/A	N/A	N/A	N/A	N/A	N/A	N/A	N/A
N/A	N/A	N/A	N/A	N/A	N/A	185	97.88	0.00	26.49	49.73	23.78
N/A	N/A	N/A	N/A	N/A	N/A	126	100.00	0.00	34.92	44.44	20.63
N/A	N/A	N/A	N/A	N/A	N/A	97	95.10	0.00	20.62	53.61	25.77
N/A	N/A	N/A	N/A	N/A	N/A	114	98.28	0.00	41.23	43.86	14.91
N/A	N/A	N/A	N/A	N/A	N/A	N/A	N/A	N/A	N/A	N/A	N/A
N/A	N/A	N/A	N/A	N/A	N/A	N/A	N/A	N/A	N/A	N/A	N/A

ALABAMA READING AND MATHEMATICS TEST

The Alabama Reading and Mathematics Test provides an assessment of students' mastery of the content contained in the Alabama Course of Study. The Reading and Mathematics Test was given in grades three through eight.

*** = Less than 10 students tested

N/D = No Data Available

N/A = Not Applicable

N/R = Not Reported

STUDENT ACADEMIC PERFORMANCE

Alabama Alternate Assessment 2005

The Alabama Alternate Assessment is designed for students with disabilities whose Individualized Education Program [IEP] team determines that the student will not participate in the regular state assessments.

READING											
SCHOOL						SYSTEM					
		Level 1	Level 2	Level 3	Level 4			Level 1	Level 2	Level 3	Level 4
Number Tested	Percent Tested	Percent Not Meeting Standard	Percent Partially Meeting Standard	Percent Meeting Standard	Percent Exceeding Standard	Number Tested	Percent Tested	Percent Not Meeting Standard	Percent Partially Meeting Standard	Percent Meeting Standard	Percent Exceeding Standard
All Students	***	***	***	***	***	19	0.98	0.00	21.05	47.37	31.58

MATHEMATICS											
SCHOOL						SYSTEM					
		Level 1	Level 2	Level 3	Level 4			Level 1	Level 2	Level 3	Level 4
Number Tested	Percent Tested	Percent Not Meeting Standard	Percent Partially Meeting Standard	Percent Meeting Standard	Percent Exceeding Standard	Number Tested	Percent Tested	Percent Not Meeting Standard	Percent Partially Meeting Standard	Percent Meeting Standard	Percent Exceeding Standard
All Students	***	***	***	***	***	19	0.98	0.00	21.05	52.63	26.32

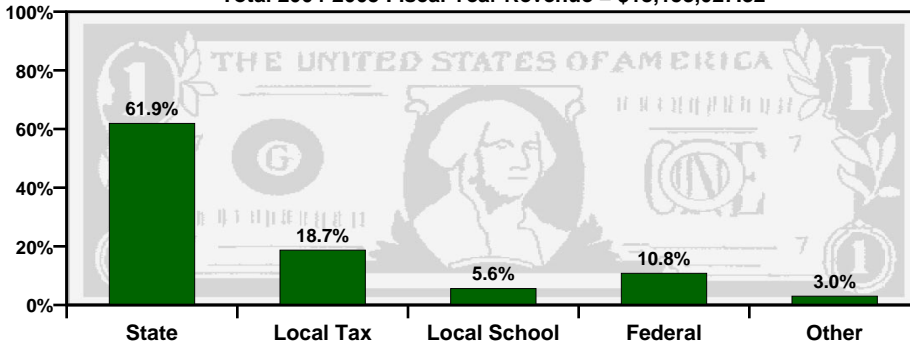
Alabama Direct Assessment of Writing 2005

Alabama students in grades five, seven, and ten are given the Alabama Direct Assessment of Writing each year to measure their writing skills. This table shows how well students met the performance standard of this test.

SCHOOL						SYSTEM					
		Level 1	Level 2	Level 3	Level 4			Level 1	Level 2	Level 3	Level 4
Number Tested	Percent Tested	Percent Not Meeting Standard	Percent Partially Meeting Standard	Percent Meeting Standard	Percent Exceeding Standard	Number Tested	Percent Tested	Percent Not Meeting Standard	Percent Partially Meeting Standard	Percent Meeting Standard	Percent Exceeding Standard
Grade 5	53	96.36	0.00	41.51	49.06	209	95.87	2.87	39.71	51.20	6.22
Grade 7	N/A	N/A	N/A	N/A	N/A	198	91.67	4.04	35.86	50.51	9.60
Grade 10	N/A	N/A	N/A	N/A	N/A	204	91.67	1.96	44.61	47.06	6.37

TAXPAYERS' REPORT - FISCAL YEAR 2004

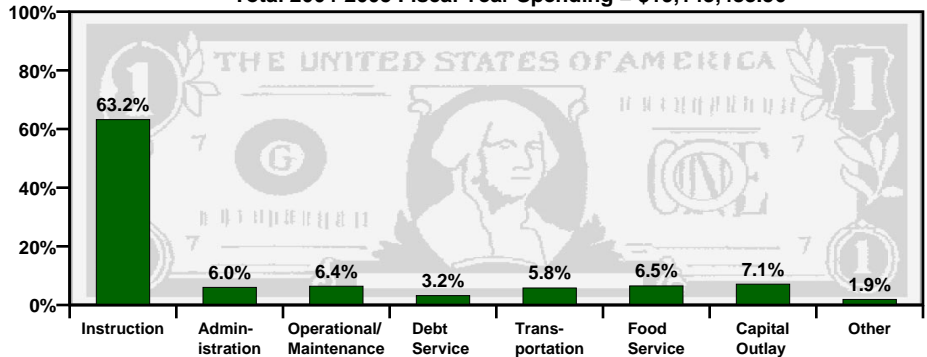
Total 2004-2005 Fiscal Year Revenue = \$18,153,027.32



Sources of School System Revenues

School System's Use of Funds

Total 2004-2005 Fiscal Year Spending = \$19,143,483.56



SOURCE of REVENUE	AMOUNT
Local School Revenue	\$1,011,175.16
Local Capital Projects Revenue	\$3,330.58
Other Local Revenue (includes local taxes)	\$3,398,215.30
Total Local Revenue	\$4,412,721.04

Local Revenue Breakdown

This table provides a breakdown of local revenues for fiscal year 2004. The revenue from local school projects / activities and the capital projects fund have been itemized to provide a more complete analysis of local fund sources.

Mills Equivalent

This is the total amount of revenue collected locally for public school purposes, divided by the value of one regular system mill of ad valorem tax. The state average is 31.37 mills equivalent.

This System	Grade
17.91	F

Spending per Student

The table below shows the spending per student for this school system. The letter grade compares the system's per student spending to the state, southeast, and nation.

Year	Amount	State	Southeast	Nation
2002-2003	\$6,187.96	C	D+	D
2003-2004	\$6,153.34	C-	n/a	D-

A = Excellent

B = Good

C = Average

D = Poor

F = Fail

