



# State Board of Education School Report Card for 2004-2005

## FE Burleson Elementary School

### State Board of Education Members

Gov. Bob Riley, Board President  
Randy McKinney, President Pro Tem, District 1  
Betty Peters, District 2  
Stephanie Bell, District 3  
Dr. Ethel Hall, Vice President Emerita, District 4  
Ella Bell, District 5  
David F. Byers, Jr., District 6  
Sandra Ray, Vice President, District 7  
Dr. Mary Jane Caylor, District 8  
Joseph B. Morton, Superintendent of Education

### Principal

Mrs. Sherry Calvert

### Superintendent

Dr. Mike Reed

### School Board Members

Mr. Greg Cain  
Dr. Andrew Dukes  
Mrs. Jennifer Sittason  
Mr. Jeff Gray  
Ms. Kathy White-Goodwin

FE Burleson Elementary School  
1100 Bethel Road NE  
Hartselle, AL 35640  
(256) 773-2411

*Report cards are prepared by the Alabama Department of Education.  
For more information including a glossary of terms, grading scales, and  
detailed data, visit the SDE Web site Accountability Reporting System at:  
<http://www.alsde.edu/Accountability/preAccountability.asp>*

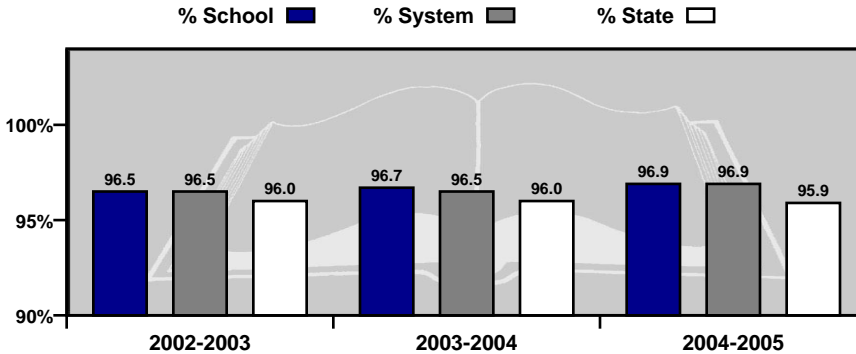


# GENERAL INFORMATION

## Average Daily Membership

This is the average number of students on attendance rolls during the first 40 days of school.

Year	ADM
2004-2005	430.1
2003-2004	427.4
2002-2003	427.3

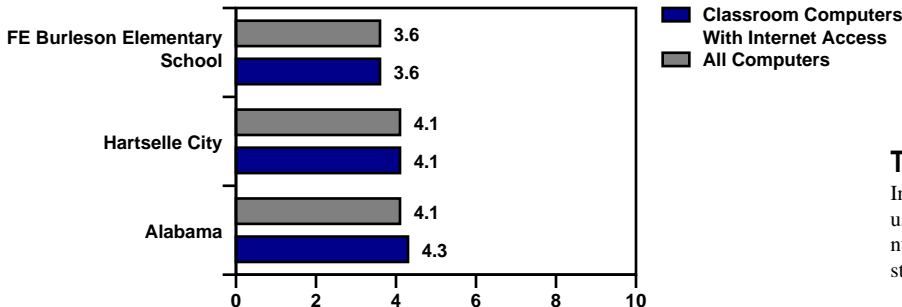
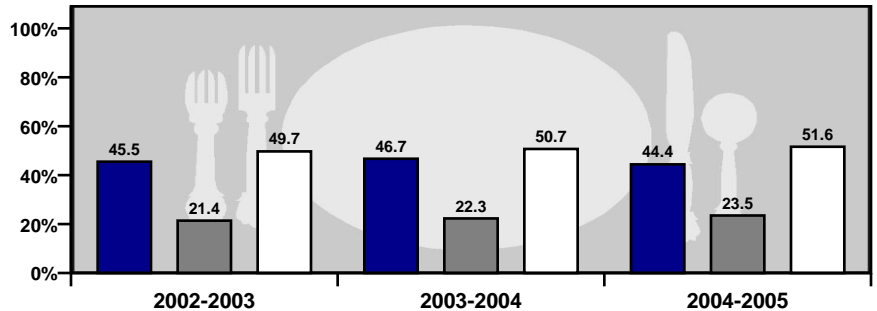


## Average Daily Attendance

This is the percent of students that attend school each day.

## Students Eligible for Free or Reduced Price Meals

This is the percent of students that applied for and were approved as reported on the First 40-Day Attendance Report. It is an indicator of poverty.



## Technology

Internet access and computer use in schools. A lower number indicates greater student access to technology.

# GENERAL INFORMATION

## Teacher Qualifications

This table shows the percentage of teachers holding each level of certification as issued by the Alabama Department of Education for this school in 2004–2005.

6-Year (Class AA) through Doctorate	Master's Degree (Class A)	Bachelor's Degree (Class B)	Alternative	Emergency
0.0%	75.0%	25.0%	0.0%	0.0%

Percentage of All Elementary and Secondary Teachers with Alternative or Emergency Certification	0.0%
---	------

## Staffing

Each school is staffed with full- and part-time faculty and staff. In 2004-2005, this school employed the following professionals.

	School	System	State
Teachers	32.1	198.7	47,558
Counselors	1.0	7.0	1,694
Librarians	1.0	5.0	1,361
Administrators	1.0	10.0	2,669
Nurses	1.0	5.0	648
Instruction Assistants	3.0	30.0	6,459
Other (certified)	0.0	5.8	1,694
Support Staff	17.7	160.5	34,379

## Safety & Discipline

The following table shows the types of discipline problems that have occurred at this school and what actions were taken in 2004-2005.

Type of Incident	Number of Incidents Reported	Action Taken		
		Suspension	Expulsion	Sent to Alternative School
Assault	0	0	0	0
Bomb Threat	0	0	0	0
Drug Related	0	0	0	0
Weapon Related	0	0	0	0

As required by federal law, students must be allowed to transfer to another school if their school is identified as persistently dangerous.

Is this a transfer option school? **NO**

# GENERAL INFORMATION

## Highly Qualified Teachers

This is the percent of teachers that are teaching and the percent of classes taught in a core subject for which the teacher is highly qualified by the State of Alabama as required by the federal legislation known as: No Child Left Behind.

CLASSES	Total Classes		Current Percentage Taught By Highly Qualified Teachers		Current Percentage Not Taught By Highly Qualified Teachers	
	2003-2004	2004-2005	2003-2004	2004-2005	2003-2004	2004-2005
SCHOOL	2003-2004	2004-2005	2003-2004	2004-2005	2003-2004	2004-2005
Elementary Classes	No Data	74	No Data	100.00	No Data	0.00
Secondary Classes	No Data	No Data	No Data	No Data	No Data	No Data
TOTAL CLASSES	126	74	100.00	100.00	0.00	0.00
SYSTEM	2003-2004	2004-2005	2003-2004	2004-2005	2003-2004	2004-2005
Elementary Classes	No Data	336	No Data	99.70	No Data	0.30
Secondary Classes	No Data	297	No Data	87.54	No Data	12.46
TOTAL CLASSES	745	633	91.68	94.00	8.32	6.00
STATE	2003-2004	2004-2005	2003-2004	2004-2005	2003-2004	2004-2005
Elementary Classes	No Data	86,833	No Data	83.39	No Data	16.61
Secondary Classes	No Data	64,682	No Data	79.21	No Data	20.79
TOTAL CLASSES	140,966	151,515	76.70	81.60	23.30	18.40

TEACHERS	Total Teachers		Current Percentage Highly Qualified Teachers		Current Percentage Not Highly Qualified Teachers	
	2003-2004	2004-2005	2003-2004	2004-2005	2003-2004	2004-2005
SCHOOL	2003-2004	2004-2005	2003-2004	2004-2005	2003-2004	2004-2005
Elementary Teachers	No Data	26	No Data	100.00	No Data	0.00
Secondary Teachers	No Data	No Data	No Data	No Data	No Data	No Data
TOTAL TEACHERS	25	26	100.00	100.00	0.00	0.00
SYSTEM	2003-2004	2004-2005	2003-2004	2004-2005	2003-2004	2004-2005
Elementary Teachers	No Data	102	No Data	99.02	No Data	0.98
Secondary Teachers	No Data	58	No Data	86.21	No Data	13.79
TOTAL TEACHERS	153	160	89.54	94.38	10.46	5.63
STATE	2003-2004	2004-2005	2003-2004	2004-2005	2003-2004	2004-2005
Elementary Teachers	No Data	35,472	No Data	80.90	No Data	19.10
Secondary Teachers	No Data	15,017	No Data	72.63	No Data	27.37
TOTAL TEACHERS	35,530	50,489	75.10	78.44	24.90	21.56

High Quality Professional Development							
Total Surveyed		Received High Quality Professional Development		Did Not Receive High Quality Professional Development		PCT With Professional Development	
2003-04	2004-05	2003-04	2004-05	2003-04	2004-05	2003-04	2004-05
N/D	30	N/D	30	N/D	0	N/D	100.00

Instructional Paraprofessionals in Title I-Funded Schools							
Total Instructional Paraprofessionals		Total Qualified		Total Not Qualified		PCT Qualified	
2003-04	2004-05	2003-04	2004-05	2003-04	2004-05	2003-04	2004-05
0	0	0	0	0	0	0.00	0.00

## Adequate Yearly Progress Status for 2005-2006 Based on School Year 2004-2005 Data

State Accountability in Alabama is based on the federal law known as the “No Child Left Behind” Act (NCLB) of 2001. NCLB uses the term Adequate Yearly Progress (AYP) to describe whether a school or system has met its annual accountability goals.

### COMPONENTS OF AYP

1. Annual Goals for Reading and Mathematics
  - Percentage of students scoring proficient or higher
2. Participation Rate
  - Percentage of students participating in assessments
3. Indicators Affecting Academic Proficiency
  - Attendance
  - Drop-out Rate

### ASSESSMENTS USED IN DETERMINING AYP

- Alabama Reading and Mathematics Test (ARMT)
  - Reading: Grades 3–8
  - Mathematics: Grades 3–8
- Alabama High School Graduation Exam (AHSGE)
  - Reading: Grade 11
  - Mathematics: Grade 11
- Alabama Alternate Assessment (AAA)
  - Reading: Grades 3–8 and 11
  - Mathematics: Grades 3–8 and 11

For more detail on the Alabama Accountability System, please reference the Accountability Interpretive Guide which can be found on the SDE Web site:

<http://www.alsde.edu/Accountability/preAccountability.asp>

Select the Accountability Reporting option on the home page. Then request the School Year: 2004-2005 Report: 2005 Interpretive Guide for State Accountability

# STATE ACCOUNTABILITY

## Adequate Yearly Progress Status for 2005-2006

**Based on School Year 2004-2005 Data**

**2005–2006 AYP Status: Did Not Make AYP**

**School Improvement Status: Not in School Improvement**

*This School met 15 AYP Goals out of 17 (88.24%)*

### READING

**2005–2006 AYP Status: Made AYP**

**Reading School Improvement Status: Not in School Improvement**

Student Group	Percent Participation Goal = 95.00%	Met Participation Goal	Proficiency Index Goal = 0.00	Met Proficiency Goal*
All Students	100	Yes	14.99	Yes
Special Education	100	Yes	-11.10	Yes
American Indian/Alaskan	No Data	No Data	No Data	No Data
Asian/Pacific Islander	No Data	No Data	No Data	No Data
Black	100	NA	4.32	NA
Hispanic	100	NA	~	NA
White	100	Yes	17.44	Yes
Limited-English Proficient	100	NA	~	NA
Free/Reduced Meals	100	Yes	4.28	Yes

### MATHEMATICS

**2005–2006 AYP Status: Did Not Make AYP**

**Mathematics School Improvement Status: Not in School Improvement**

Student Group	Percent Participation Goal = 95.00%	Met Participation Goal	Proficiency Index Goal = 0.00	Met Proficiency Goal*
All Students	100	Yes	8.96	Yes
Special Education	100	Yes	-30.24	No
American Indian/Alaskan	No Data	No Data	No Data	No Data
Asian/Pacific Islander	No Data	No Data	No Data	No Data
Black	100	NA	-11.36	NA
Hispanic	100	NA	~	NA
White	100	Yes	11.98	Yes
Limited-English Proficient	100	NA	~	NA
Free/Reduced Meals	100	Yes	-7.99	No

#### Additional Academic Indicators

Student Group	Attendance Rate Goal = 95.00%	Attendance Rate Previous Year	Met Attendance AYP*	Four-Year Projected Dropout Rate Goal = 10.00	Four-Year Projected Dropout Rate Previous Year	Met Four-Year Projected Dropout AYP**
All Students	96.92	96.80	Yes	N/A	N/A	N/A

~ Not reported, less than 10 students (protects confidentiality).  
 NA = Not in AYP, less than 40 students (ensures reliability).

\* AYP is met if the goal is met or the goal is within the confidence interval (ensures reliability).  
 \*\* AYP is met if the goal is met or there is improvement from the previous year.

# STUDENT ACADEMIC PERFORMANCE

		READING											
		SCHOOL						SYSTEM					
			Level 1	Level 2	Level 3	Level 4			Level 1	Level 2	Level 3	Level 4	
Grade 3		Number Tested	Percent Tested	Percent Not Meeting Standard	Percent Partially Meeting Standard	Percent Meeting Standard	Percent Exceeding Standard	Number Tested	Percent Tested	Percent Not Meeting Standard	Percent Partially Meeting Standard	Percent Meeting Standard	Percent Exceeding Standard
All Students		77	98.72	0.00	15.58	41.56	42.86	244	97.60	0.41	12.70	37.30	49.59
Special Education		13	92.86	0.00	53.85	46.15	0.00	30	93.75	3.33	53.33	40.00	3.33
American Indian / Alaskan		N/A	N/A	N/A	N/A	N/A	N/A	***	***	***	***	***	***
Asian / Pacific Islander		N/A	N/A	N/A	N/A	N/A	N/A	N/A	N/A	N/A	N/A	N/A	N/A
Black		11	100.00	0.00	27.27	45.45	27.27	17	100.00	0.00	23.53	47.06	29.41
Hispanic		N/A	N/A	N/A	N/A	N/A	N/A	***	***	***	***	***	***
White		66	98.51	0.00	13.64	40.91	45.45	225	97.40	0.44	11.56	36.44	51.56
Male		44	97.78	0.00	13.64	45.45	40.91	130	98.48	0.77	13.85	42.31	43.08
Female		33	100.00	0.00	18.18	36.36	45.45	114	97.44	0.00	11.40	31.58	57.02
Free / Reduced Meals		28	100.00	0.00	35.71	42.86	21.43	70	98.59	0.00	30.00	40.00	30.00
Limited-English Proficient		N/A	N/A	N/A	N/A	N/A	N/A	***	***	***	***	***	***
Migrant		N/A	N/A	N/A	N/A	N/A	N/A	N/A	N/A	N/A	N/A	N/A	N/A
Grade 4													
All Students		70	87.50	0.00	18.57	35.71	45.71	253	94.76	0.00	8.70	26.48	64.82
Special Education		14	63.64	0.00	64.29	21.43	14.29	30	75.00	0.00	50.00	30.00	20.00
American Indian / Alaskan		N/A	N/A	N/A	N/A	N/A	N/A	N/A	N/A	N/A	N/A	N/A	N/A
Asian / Pacific Islander		N/A	N/A	N/A	N/A	N/A	N/A	***	***	***	***	***	***
Black		11	73.33	0.00	18.18	72.73	9.09	15	78.95	0.00	13.33	60.00	26.67
Hispanic		***	***	***	***	***	***	***	***	***	***	***	***
White		54	90.00	0.00	16.67	29.63	53.70	230	95.83	0.00	7.83	24.35	67.83
Male		43	86.00	0.00	20.93	41.86	37.21	140	93.96	0.00	10.71	27.86	61.43
Female		27	90.00	0.00	14.81	25.93	59.26	113	95.76	0.00	6.19	24.78	69.03
Free / Reduced Meals		33	86.84	0.00	27.27	36.36	36.36	71	91.03	0.00	19.72	33.80	46.48
Limited-English Proficient		***	***	***	***	***	***	***	***	***	***	***	***
Migrant		N/A	N/A	N/A	N/A	N/A	N/A	N/A	N/A	N/A	N/A	N/A	N/A
Grade 5													
All Students		64	96.97	1.56	12.50	28.13	57.81	220	98.65	0.45	10.91	29.09	59.55
Special Education		10	100.00	10.00	30.00	50.00	10.00	26	100.00	3.85	50.00	30.77	15.38
American Indian / Alaskan		N/A	N/A	N/A	N/A	N/A	N/A	***	***	***	***	***	***
Asian / Pacific Islander		N/A	N/A	N/A	N/A	N/A	N/A	***	***	***	***	***	***
Black		***	***	***	***	***	***	***	***	***	***	***	***
Hispanic		***	***	***	***	***	***	***	***	***	***	***	***
White		58	98.31	0.00	10.34	27.59	62.07	208	99.05	0.00	9.13	29.81	61.06
Male		28	100.00	0.00	21.43	28.57	50.00	108	100.00	0.00	13.89	25.93	60.19
Female		36	97.30	2.78	5.56	27.78	63.89	112	98.25	0.89	8.04	32.14	58.93
Free / Reduced Meals		26	100.00	3.85	15.38	42.31	38.46	57	98.28	1.75	24.56	40.35	33.33
Limited-English Proficient		***	***	***	***	***	***	***	***	***	***	***	***
Migrant		N/A	N/A	N/A	N/A	N/A	N/A	N/A	N/A	N/A	N/A	N/A	N/A

\*\*\* = Less than 10 students tested

N/D = No Data Available

N/A = Not Applicable

N/R = Not Reported



# STUDENT ACADEMIC PERFORMANCE

## MATHEMATICS

SCHOOL						SYSTEM					
		Level 1	Level 2	Level 3	Level 4			Level 1	Level 2	Level 3	Level 4
Number Tested	Percent Tested	Percent Not Meeting Standard	Percent Partially Meeting Standard	Percent Meeting Standard	Percent Exceeding Standard	Number Tested	Percent Tested	Percent Not Meeting Standard	Percent Partially Meeting Standard	Percent Meeting Standard	Percent Exceeding Standard
77	98.72	10.39	19.48	29.87	40.26	245	98.00	7.76	19.18	28.16	44.90
13	92.86	46.15	46.15	0.00	7.69	30	93.75	43.33	36.67	6.67	13.33
N/A	N/A	N/A	N/A	N/A	N/A	***	***	***	***	***	***
N/A	N/A	N/A	N/A	N/A	N/A	N/A	N/A	N/A	N/A	N/A	N/A
11	100.00	27.27	36.36	27.27	9.09	17	100.00	23.53	41.18	23.53	11.76
N/A	N/A	N/A	N/A	N/A	N/A	***	***	***	***	***	***
66	98.51	7.58	16.67	30.30	45.45	226	97.84	6.64	17.26	28.76	47.35
44	97.78	11.36	15.91	38.64	34.09	130	98.48	10.00	17.69	30.77	41.54
33	100.00	9.09	24.24	18.18	48.48	115	98.29	5.22	20.87	25.22	48.70
28	100.00	25.00	21.43	32.14	21.43	70	98.59	21.43	20.00	31.43	27.14
N/A	N/A	N/A	N/A	N/A	N/A	***	***	***	***	***	***
N/A	N/A	N/A	N/A	N/A	N/A	N/A	N/A	N/A	N/A	N/A	N/A
70	87.50	0.00	22.86	34.29	42.86	253	94.76	0.79	16.60	35.57	47.04
14	63.64	0.00	64.29	28.57	7.14	30	75.00	6.67	53.33	36.67	3.33
N/A	N/A	N/A	N/A	N/A	N/A	N/A	N/A	N/A	N/A	N/A	N/A
N/A	N/A	N/A	N/A	N/A	N/A	***	***	***	***	***	***
11	73.33	0.00	27.27	54.55	18.18	15	78.95	0.00	20.00	53.33	26.67
***	***	***	***	***	***	***	***	***	***	***	***
54	90.00	0.00	22.22	29.63	48.15	230	95.83	0.87	16.52	33.91	48.70
43	86.00	0.00	20.93	34.88	44.19	140	93.96	0.71	15.71	37.14	46.43
27	90.00	0.00	25.93	33.33	40.74	113	95.76	0.88	17.70	33.63	47.79
33	86.84	0.00	36.36	39.39	24.24	71	91.03	2.82	29.58	38.03	29.58
***	***	***	***	***	***	***	***	***	***	***	***
N/A	N/A	N/A	N/A	N/A	N/A	N/A	N/A	N/A	N/A	N/A	N/A
64	96.97	3.13	37.50	39.06	20.31	221	99.10	1.36	19.00	35.29	44.34
10	100.00	20.00	60.00	20.00	0.00	26	100.00	11.54	57.69	26.92	3.85
N/A	N/A	N/A	N/A	N/A	N/A	***	***	***	***	***	***
N/A	N/A	N/A	N/A	N/A	N/A	***	***	***	***	***	***
***	***	***	***	***	***	***	***	***	***	***	***
***	***	***	***	***	***	***	***	***	***	***	***
58	98.31	1.72	32.76	43.10	22.41	209	99.52	0.96	17.22	35.89	45.93
28	100.00	0.00	42.86	32.14	25.00	108	100.00	0.00	20.37	28.70	50.93
36	97.30	5.56	33.33	44.44	16.67	113	99.12	2.65	17.70	41.59	38.05
26	100.00	3.85	53.85	30.77	11.54	58	100.00	3.45	37.93	37.93	20.69
***	***	***	***	***	***	***	***	***	***	***	***
N/A	N/A	N/A	N/A	N/A	N/A	N/A	N/A	N/A	N/A	N/A	N/A

## ALABAMA READING AND MATHEMATICS TEST

The Alabama Reading and Mathematics Test provides an assessment of students' mastery of the content contained in the Alabama Course of Study. The Reading and Mathematics Test was given in grades three through eight.

\*\*\* = Less than 10 students tested

N/D = No Data Available

N/A = Not Applicable

N/R = Not Reported

# STUDENT ACADEMIC PERFORMANCE

		READING											
		SCHOOL						SYSTEM					
			Level 1	Level 2	Level 3	Level 4			Level 1	Level 2	Level 3	Level 4	
Grade 6		Number Tested	Percent Tested	Percent Not Meeting Standard	Percent Partially Meeting Standard	Percent Meeting Standard	Percent Exceeding Standard	Number Tested	Percent Tested	Percent Not Meeting Standard	Percent Partially Meeting Standard	Percent Meeting Standard	Percent Exceeding Standard
All Students		N/A	N/A	N/A	N/A	N/A	N/A	232	97.89	0.43	8.19	24.57	66.81
Special Education		N/A	N/A	N/A	N/A	N/A	N/A	22	88.00	4.55	50.00	36.36	9.09
American Indian / Alaskan		N/A	N/A	N/A	N/A	N/A	N/A	***	***	***	***	***	***
Asian / Pacific Islander		N/A	N/A	N/A	N/A	N/A	N/A	N/A	N/A	N/A	N/A	N/A	N/A
Black		N/A	N/A	N/A	N/A	N/A	N/A	14	100.00	0.00	35.71	35.71	28.57
Hispanic		N/A	N/A	N/A	N/A	N/A	N/A	***	***	***	***	***	***
White		N/A	N/A	N/A	N/A	N/A	N/A	208	97.65	0.48	5.77	23.08	70.67
Male		N/A	N/A	N/A	N/A	N/A	N/A	121	98.37	0.83	10.74	23.97	64.46
Female		N/A	N/A	N/A	N/A	N/A	N/A	111	97.37	0.00	5.41	25.23	69.37
Free / Reduced Meals		N/A	N/A	N/A	N/A	N/A	N/A	65	95.59	1.54	20.00	26.15	52.31
Limited-English Proficient		N/A	N/A	N/A	N/A	N/A	N/A	***	***	***	***	***	***
Migrant		N/A	N/A	N/A	N/A	N/A	N/A	***	***	***	***	***	***
Grade 7													
All Students		N/A	N/A	N/A	N/A	N/A	N/A	244	96.83	1.23	9.02	28.69	61.07
Special Education		N/A	N/A	N/A	N/A	N/A	N/A	23	79.31	13.04	56.52	17.39	13.04
American Indian / Alaskan		N/A	N/A	N/A	N/A	N/A	N/A	N/A	N/A	N/A	N/A	N/A	N/A
Asian / Pacific Islander		N/A	N/A	N/A	N/A	N/A	N/A	N/A	N/A	N/A	N/A	N/A	N/A
Black		N/A	N/A	N/A	N/A	N/A	N/A	15	100.00	0.00	20.00	40.00	40.00
Hispanic		N/A	N/A	N/A	N/A	N/A	N/A	***	***	***	***	***	***
White		N/A	N/A	N/A	N/A	N/A	N/A	227	96.60	1.32	8.37	27.31	63.00
Male		N/A	N/A	N/A	N/A	N/A	N/A	121	97.58	1.65	13.22	31.40	53.72
Female		N/A	N/A	N/A	N/A	N/A	N/A	123	96.09	0.81	4.88	26.02	68.29
Free / Reduced Meals		N/A	N/A	N/A	N/A	N/A	N/A	56	93.33	3.57	19.64	33.93	42.86
Limited-English Proficient		N/A	N/A	N/A	N/A	N/A	N/A	***	***	***	***	***	***
Migrant		N/A	N/A	N/A	N/A	N/A	N/A	N/A	N/A	N/A	N/A	N/A	N/A
Grade 8													
All Students		N/A	N/A	N/A	N/A	N/A	N/A	234	96.69	1.71	17.52	29.91	50.85
Special Education		N/A	N/A	N/A	N/A	N/A	N/A	31	88.57	12.90	48.39	22.58	16.13
American Indian / Alaskan		N/A	N/A	N/A	N/A	N/A	N/A	***	***	***	***	***	***
Asian / Pacific Islander		N/A	N/A	N/A	N/A	N/A	N/A	***	***	***	***	***	***
Black		N/A	N/A	N/A	N/A	N/A	N/A	17	100.00	0.00	35.29	47.06	17.65
Hispanic		N/A	N/A	N/A	N/A	N/A	N/A	***	***	***	***	***	***
White		N/A	N/A	N/A	N/A	N/A	N/A	207	96.73	1.93	14.98	28.50	54.59
Male		N/A	N/A	N/A	N/A	N/A	N/A	132	97.06	3.03	25.76	32.58	38.64
Female		N/A	N/A	N/A	N/A	N/A	N/A	102	96.23	0.00	6.86	26.47	66.67
Free / Reduced Meals		N/A	N/A	N/A	N/A	N/A	N/A	68	97.14	1.47	27.94	39.71	30.88
Limited-English Proficient		N/A	N/A	N/A	N/A	N/A	N/A	***	***	***	***	***	***
Migrant		N/A	N/A	N/A	N/A	N/A	N/A	N/A	N/A	N/A	N/A	N/A	N/A

\*\*\* = Less than 10 students tested

N/D = No Data Available

N/A = Not Applicable

N/R = Not Reported

# STUDENT ACADEMIC PERFORMANCE

## MATHEMATICS

SCHOOL						SYSTEM					
		Level 1	Level 2	Level 3	Level 4			Level 1	Level 2	Level 3	Level 4
Number Tested	Percent Tested	Percent Not Meeting Standard	Percent Partially Meeting Standard	Percent Meeting Standard	Percent Exceeding Standard	Number Tested	Percent Tested	Percent Not Meeting Standard	Percent Partially Meeting Standard	Percent Meeting Standard	Percent Exceeding Standard
N/A	N/A	N/A	N/A	N/A	N/A	230	97.05	0.43	22.17	42.61	34.78
N/A	N/A	N/A	N/A	N/A	N/A	22	88.00	0.00	90.91	9.09	0.00
N/A	N/A	N/A	N/A	N/A	N/A	***	***	***	***	***	***
N/A	N/A	N/A	N/A	N/A	N/A	N/A	N/A	N/A	N/A	N/A	N/A
N/A	N/A	N/A	N/A	N/A	N/A	13	92.86	0.00	61.54	30.77	7.69
N/A	N/A	N/A	N/A	N/A	N/A	***	***	***	***	***	***
N/A	N/A	N/A	N/A	N/A	N/A	207	97.18	0.00	19.81	42.51	37.68
N/A	N/A	N/A	N/A	N/A	N/A	120	97.56	0.00	21.67	45.00	33.33
N/A	N/A	N/A	N/A	N/A	N/A	110	96.49	0.91	22.73	40.00	36.36
N/A	N/A	N/A	N/A	N/A	N/A	64	94.12	1.56	39.06	35.94	23.44
N/A	N/A	N/A	N/A	N/A	N/A	***	***	***	***	***	***
N/A	N/A	N/A	N/A	N/A	N/A	***	***	***	***	***	***
N/A	N/A	N/A	N/A	N/A	N/A	244	96.83	0.00	19.67	49.18	31.15
N/A	N/A	N/A	N/A	N/A	N/A	25	86.21	0.00	88.00	12.00	0.00
N/A	N/A	N/A	N/A	N/A	N/A	N/A	N/A	N/A	N/A	N/A	N/A
N/A	N/A	N/A	N/A	N/A	N/A	N/A	N/A	N/A	N/A	N/A	N/A
N/A	N/A	N/A	N/A	N/A	N/A	15	100.00	0.00	20.00	73.33	6.67
N/A	N/A	N/A	N/A	N/A	N/A	***	***	***	***	***	***
N/A	N/A	N/A	N/A	N/A	N/A	227	96.60	0.00	19.38	47.58	33.04
N/A	N/A	N/A	N/A	N/A	N/A	120	96.77	0.00	25.00	42.50	32.50
N/A	N/A	N/A	N/A	N/A	N/A	124	96.88	0.00	14.52	55.65	29.84
N/A	N/A	N/A	N/A	N/A	N/A	58	96.67	0.00	37.93	48.28	13.79
N/A	N/A	N/A	N/A	N/A	N/A	***	***	***	***	***	***
N/A	N/A	N/A	N/A	N/A	N/A	N/A	N/A	N/A	N/A	N/A	N/A
N/A	N/A	N/A	N/A	N/A	N/A	232	95.87	0.00	18.10	51.29	30.60
N/A	N/A	N/A	N/A	N/A	N/A	31	88.57	0.00	61.29	29.03	9.68
N/A	N/A	N/A	N/A	N/A	N/A	***	***	***	***	***	***
N/A	N/A	N/A	N/A	N/A	N/A	***	***	***	***	***	***
N/A	N/A	N/A	N/A	N/A	N/A	17	100.00	0.00	29.41	64.71	5.88
N/A	N/A	N/A	N/A	N/A	N/A	***	***	***	***	***	***
N/A	N/A	N/A	N/A	N/A	N/A	206	96.26	0.00	17.48	49.51	33.01
N/A	N/A	N/A	N/A	N/A	N/A	131	96.32	0.00	22.90	49.62	27.48
N/A	N/A	N/A	N/A	N/A	N/A	101	95.28	0.00	11.88	53.47	34.65
N/A	N/A	N/A	N/A	N/A	N/A	67	95.71	0.00	31.34	58.21	10.45
N/A	N/A	N/A	N/A	N/A	N/A	***	***	***	***	***	***
N/A	N/A	N/A	N/A	N/A	N/A	N/A	N/A	N/A	N/A	N/A	N/A

## ALABAMA READING AND MATHEMATICS TEST

The Alabama Reading and Mathematics Test provides an assessment of students' mastery of the content contained in the Alabama Course of Study. The Reading and Mathematics Test was given in grades three through eight.

\*\*\* = Less than 10 students tested

N/D = No Data Available

N/A = Not Applicable

N/R = Not Reported

# STUDENT ACADEMIC PERFORMANCE

## Alabama Alternate Assessment 2005

The Alabama Alternate Assessment is designed for students with disabilities whose Individualized Education Program [IEP] team determines that the student will not participate in the regular state assessments.

READING												
SCHOOL						SYSTEM						
		Level 1	Level 2	Level 3	Level 4			Level 1	Level 2	Level 3	Level 4	
Number Tested	Percent Tested	Percent Not Meeting Standard	Percent Partially Meeting Standard	Percent Meeting Standard	Percent Exceeding Standard	Number Tested	Percent Tested	Percent Not Meeting Standard	Percent Partially Meeting Standard	Percent Meeting Standard	Percent Exceeding Standard	
<b>All Students</b>	***	***	***	***	***	***	21	1.00	0.00	0.00	47.62	52.38

MATHEMATICS												
SCHOOL						SYSTEM						
		Level 1	Level 2	Level 3	Level 4			Level 1	Level 2	Level 3	Level 4	
Number Tested	Percent Tested	Percent Not Meeting Standard	Percent Partially Meeting Standard	Percent Meeting Standard	Percent Exceeding Standard	Number Tested	Percent Tested	Percent Not Meeting Standard	Percent Partially Meeting Standard	Percent Meeting Standard	Percent Exceeding Standard	
<b>All Students</b>	***	***	***	***	***	***	21	1.00	0.00	14.29	42.86	42.86

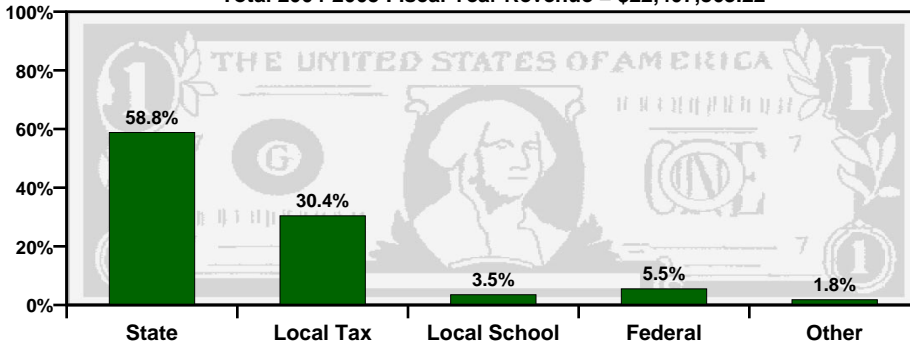
## Alabama Direct Assessment of Writing 2005

Alabama students in grades five, seven, and ten are given the Alabama Direct Assessment of Writing each year to measure their writing skills. This table shows how well students met the performance standard of this test.

SCHOOL						SYSTEM						
		Level 1	Level 2	Level 3	Level 4			Level 1	Level 2	Level 3	Level 4	
Number Tested	Percent Tested	Percent Not Meeting Standard	Percent Partially Meeting Standard	Percent Meeting Standard	Percent Exceeding Standard	Number Tested	Percent Tested	Percent Not Meeting Standard	Percent Partially Meeting Standard	Percent Meeting Standard	Percent Exceeding Standard	
<b>Grade 5</b>	57	86.36	5.26	24.56	52.63	17.54	213	95.52	3.29	27.70	48.36	20.66
<b>Grade 7</b>	N/A	N/A	N/A	N/A	N/A	N/A	239	94.84	4.60	13.39	63.18	18.83
<b>Grade 10</b>	N/A	N/A	N/A	N/A	N/A	N/A	211	94.84	0.47	13.27	57.82	28.44

# TAXPAYERS' REPORT - FISCAL YEAR 2004

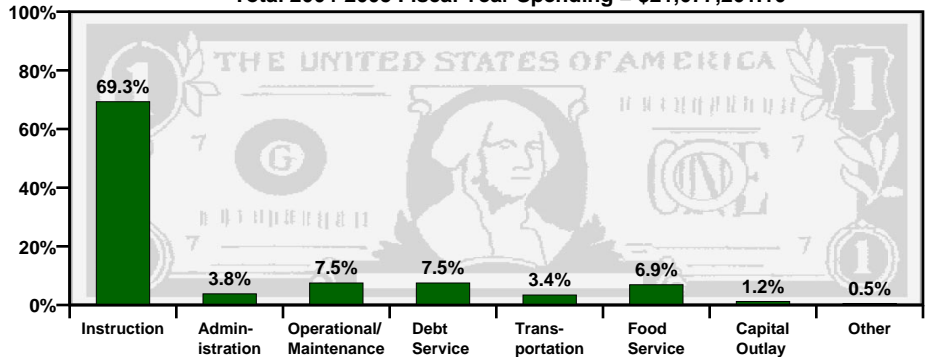
Total 2004-2005 Fiscal Year Revenue = \$22,407,863.22



## Sources of School System Revenues

## School System's Use of Funds

Total 2004-2005 Fiscal Year Spending = \$21,677,261.10



SOURCE of REVENUE	AMOUNT
Local School Revenue	\$779,515.61
Local Capital Projects Revenue	\$0.00
Other Local Revenue (includes local taxes)	\$6,802,674.36
<b>Total Local Revenue</b>	<b>\$7,582,189.97</b>

## Local Revenue Breakdown

This table provides a breakdown of local revenues for fiscal year 2004. The revenue from local school projects / activities and the capital projects fund have been itemized to provide a more complete analysis of local fund sources.

## Mills Equivalent

This is the total amount of revenue collected locally for public school purposes, divided by the value of one regular system mill of ad valorem tax. The state average is 31.37 mills equivalent.

This System	Grade
73.76	A

## Spending per Student

The table below shows the spending per student for this school system. The letter grade compares the system's per student spending to the state, southeast, and nation.

Year	Amount	State	Southeast	Nation
2002-2003	\$6,270.29	C	D+	D
2003-2004	\$6,314.80	C	D-	D-

A = Excellent

B = Good

C = Average

D = Poor

F = Fail





