



State Board of Education School Report Card for 2004-2005

Harry N Mixon Elementary School

State Board of Education Members

Gov. Bob Riley, Board President
Randy McKinney, President Pro Tem, District 1
Betty Peters, District 2
Stephanie Bell, District 3
Dr. Ethel Hall, Vice President Emerita, District 4
Ella Bell, District 5
David F. Byers, Jr., District 6
Sandra Ray, Vice President, District 7
Dr. Mary Jane Caylor, District 8
Joseph B. Morton, Superintendent of Education

Principal

Ms. Roslyn Mikoda

Superintendent

Dr. Daniel Charles Payant

School Board Members

Mr. Frank Garrett
Mrs. Petra Prazinko
Mr. Sammy Judah
Mr. Morris Armstrong
Mrs. Martha Jackson

Harry N Mixon Elementary School
349 Sherrill Ln
Ozark, AL 36360
(334) 774-4912

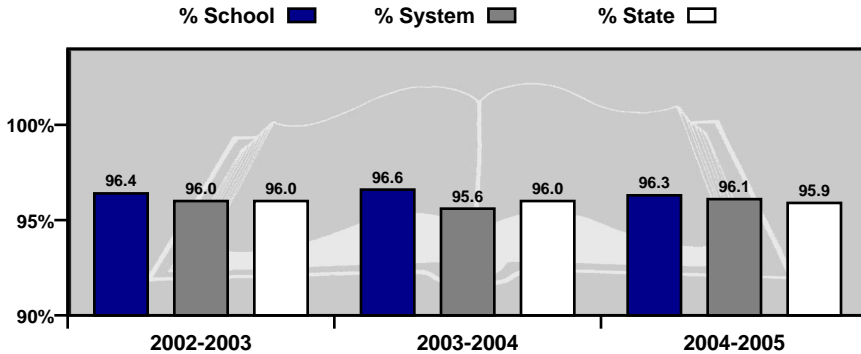
*Report cards are prepared by the Alabama Department of Education.
For more information including a glossary of terms, grading scales, and
detailed data, visit the SDE Web site Accountability Reporting System at:
<http://www.alsde.edu/Accountability/preAccountability.asp>*

GENERAL INFORMATION

Average Daily Membership

This is the average number of students on attendance rolls during the first 40 days of school.

Year	ADM
2004-2005	461.5
2003-2004	418.0
2002-2003	428.0

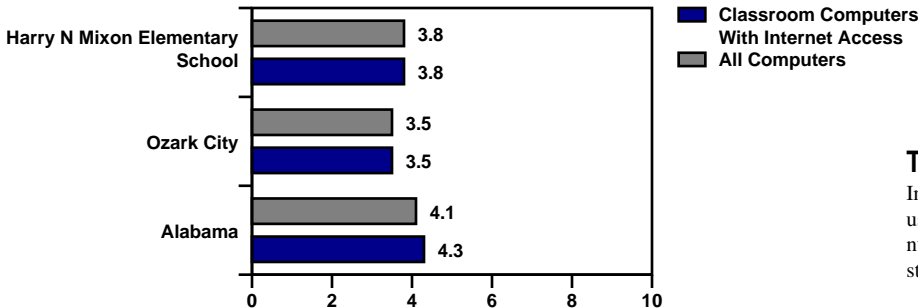
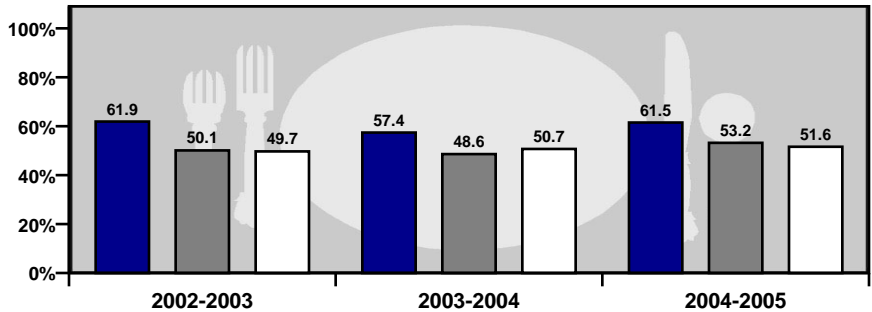


Average Daily Attendance

This is the percent of students that attend school each day.

Students Eligible for Free or Reduced Price Meals

This is the percent of students that applied for and were approved as reported on the First 40-Day Attendance Report. It is an indicator of poverty.



Technology

Internet access and computer use in schools. A lower number indicates greater student access to technology.

GENERAL INFORMATION

Teacher Qualifications

This table shows the percentage of teachers holding each level of certification as issued by the Alabama Department of Education for this school in 2004–2005.

6-Year (Class AA) through Doctorate	Master's Degree (Class A)	Bachelor's Degree (Class B)	Alternative	Emergency
0.0%	35.3%	64.7%	0.0%	0.0%

Percentage of All Elementary and Secondary Teachers with Alternative or Emergency Certification	0.0%
-------------------------------------------------------------------------------------------------	------

Staffing

Each school is staffed with full- and part-time faculty and staff. In 2004-2005, this school employed the following professionals.

	School	System	State
Teachers	33.4	181.9	47,558
Counselors	1.0	7.0	1,694
Librarians	1.0	5.5	1,361
Administrators	1.0	12.9	2,669
Nurses	0.0	1.0	648
Instruction Assistants	5.0	22.0	6,459
Other (certified)	0.0	4.7	1,694
Support Staff	13.2	132.1	34,379

Safety & Discipline

The following table shows the types of discipline problems that have occurred at this school and what actions were taken in 2004-2005.

Type of Incident	Number of Incidents Reported	Action Taken		
		Suspension	Expulsion	Sent to Alternative School
Assault	0	0	0	0
Bomb Threat	0	0	0	0
Drug Related	0	0	0	0
Weapon Related	0	0	0	0

As required by federal law, students must be allowed to transfer to another school if their school is identified as persistently dangerous.

Is this a transfer option school? **NO**

GENERAL INFORMATION

Highly Qualified Teachers

This is the percent of teachers that are teaching and the percent of classes taught in a core subject for which the teacher is highly qualified by the State of Alabama as required by the federal legislation known as: No Child Left Behind.

CLASSES	Total Classes		Current Percentage Taught By Highly Qualified Teachers		Current Percentage Not Taught By Highly Qualified Teachers	
	2003-2004	2004-2005	2003-2004	2004-2005	2003-2004	2004-2005
SCHOOL	2003-2004	2004-2005	2003-2004	2004-2005	2003-2004	2004-2005
Elementary Classes	No Data	31	No Data	25.81	No Data	74.19
Secondary Classes	No Data	No Data	No Data	No Data	No Data	No Data
TOTAL CLASSES	139	31	85.61	25.81	14.39	74.19
SYSTEM	2003-2004	2004-2005	2003-2004	2004-2005	2003-2004	2004-2005
Elementary Classes	No Data	249	No Data	85.54	No Data	14.46
Secondary Classes	No Data	234	No Data	92.31	No Data	7.69
TOTAL CLASSES	570	483	86.49	88.82	13.51	11.18
STATE	2003-2004	2004-2005	2003-2004	2004-2005	2003-2004	2004-2005
Elementary Classes	No Data	86,833	No Data	83.39	No Data	16.61
Secondary Classes	No Data	64,682	No Data	79.21	No Data	20.79
TOTAL CLASSES	140,966	151,515	76.70	81.60	23.30	18.40

TEACHERS	Total Teachers		Current Percentage Highly Qualified Teachers		Current Percentage Not Highly Qualified Teachers	
	2003-2004	2004-2005	2003-2004	2004-2005	2003-2004	2004-2005
SCHOOL	2003-2004	2004-2005	2003-2004	2004-2005	2003-2004	2004-2005
Elementary Teachers	No Data	31	No Data	25.81	No Data	74.19
Secondary Teachers	No Data	No Data	No Data	No Data	No Data	No Data
TOTAL TEACHERS	31	31	83.87	25.81	16.13	74.19
SYSTEM	2003-2004	2004-2005	2003-2004	2004-2005	2003-2004	2004-2005
Elementary Teachers	No Data	90	No Data	71.11	No Data	28.89
Secondary Teachers	No Data	51	No Data	88.24	No Data	11.76
TOTAL TEACHERS	136	141	86.03	77.30	13.97	22.70
STATE	2003-2004	2004-2005	2003-2004	2004-2005	2003-2004	2004-2005
Elementary Teachers	No Data	35,472	No Data	80.90	No Data	19.10
Secondary Teachers	No Data	15,017	No Data	72.63	No Data	27.37
TOTAL TEACHERS	35,530	50,489	75.10	78.44	24.90	21.56

High Quality Professional Development							
Total Surveyed		Received High Quality Professional Development		Did Not Receive High Quality Professional Development		PCT With Professional Development	
2003-04	2004-05	2003-04	2004-05	2003-04	2004-05	2003-04	2004-05
N/D	31	N/D	31	N/D	0	N/D	100.00

Instructional Paraprofessionals in Title I-Funded Schools							
Total Instructional Paraprofessionals		Total Qualified		Total Not Qualified		PCT Qualified	
2003-04	2004-05	2003-04	2004-05	2003-04	2004-05	2003-04	2004-05
0	0	0	0	0	0	0.00	0.00

Adequate Yearly Progress Status for 2005-2006 Based on School Year 2004-2005 Data

State Accountability in Alabama is based on the federal law known as the “No Child Left Behind” Act (NCLB) of 2001. NCLB uses the term Adequate Yearly Progress (AYP) to describe whether a school or system has met its annual accountability goals.

COMPONENTS OF AYP

1. Annual Goals for Reading and Mathematics
 - Percentage of students scoring proficient or higher
2. Participation Rate
 - Percentage of students participating in assessments
3. Indicators Affecting Academic Proficiency
 - Attendance
 - Drop-out Rate

ASSESSMENTS USED IN DETERMINING AYP

- Alabama Reading and Mathematics Test (ARMT)
 - Reading: Grades 3–8
 - Mathematics: Grades 3–8
- Alabama High School Graduation Exam (AHSGE)
 - Reading: Grade 11
 - Mathematics: Grade 11
- Alabama Alternate Assessment (AAA)
 - Reading: Grades 3–8 and 11
 - Mathematics: Grades 3–8 and 11

For more detail on the Alabama Accountability System, please reference the Accountability Interpretive Guide which can be found on the SDE Web site:

<http://www.alsde.edu/Accountability/preAccountability.asp>

Select the Accountability Reporting option on the home page. Then request the School Year: 2004-2005 Report: 2005 Interpretive Guide for State Accountability

STATE ACCOUNTABILITY

Adequate Yearly Progress Status for 2005-2006

Based on School Year 2004-2005 Data

2005–2006 AYP Status: Made AYP

School Improvement Status: Not in School Improvement

This School met 17 AYP Goals out of 17 (100.00%)

READING

2005–2006 AYP Status: Made AYP

Reading School Improvement Status: Not in School Improvement

Student Group	Percent Participation Goal = 95.00%	Met Participation Goal	Proficiency Index Goal = 0.00	Met Proficiency Goal*
All Students	100	Yes	13.62	Yes
Special Education	100	NA	-27.69	NA
American Indian/Alaskan	No Data	No Data	No Data	No Data
Asian/Pacific Islander	No Data	No Data	No Data	No Data
Black	100	Yes	6.45	Yes
Hispanic	100	NA	~	NA
White	99	Yes	21.20	Yes
Limited-English Proficient	No Data	No Data	No Data	No Data
Free/Reduced Meals	99	Yes	7.78	Yes

MATHEMATICS

2005–2006 AYP Status: Made AYP

Mathematics School Improvement Status: Not in School Improvement

Student Group	Percent Participation Goal = 95.00%	Met Participation Goal	Proficiency Index Goal = 0.00	Met Proficiency Goal*
All Students	100	Yes	10.00	Yes
Special Education	100	NA	-37.38	NA
American Indian/Alaskan	No Data	No Data	No Data	No Data
Asian/Pacific Islander	No Data	No Data	No Data	No Data
Black	100	Yes	-.02	Yes
Hispanic	100	NA	~	NA
White	99	Yes	20.15	Yes
Limited-English Proficient	No Data	No Data	No Data	No Data
Free/Reduced Meals	99	Yes	4.47	Yes

Additional Academic Indicators

Student Group	Attendance Rate Goal = 95.00%	Attendance Rate Previous Year	Met Attendance AYP*	Four-Year Projected Dropout Rate Goal = 10.00	Four-Year Projected Dropout Rate Previous Year	Met Four-Year Projected Dropout AYP**
All Students	96.35	96.70	Yes	N/A	N/A	N/A

~ Not reported, less than 10 students (protects confidentiality).
 NA = Not in AYP, less than 40 students (ensures reliability).

* AYP is met if the goal is met or the goal is within the confidence interval (ensures reliability).
 ** AYP is met if the goal is met or there is improvement from the previous year.

STUDENT ACADEMIC PERFORMANCE

		READING												
		SCHOOL						SYSTEM						
		Number Tested	Percent Tested	Level 1 Percent Not Meeting Standard	Level 2 Percent Partially Meeting Standard	Level 3 Percent Meeting Standard	Level 4 Percent Exceeding Standard	Number Tested	Percent Tested	Level 1 Percent Not Meeting Standard	Level 2 Percent Partially Meeting Standard	Level 3 Percent Meeting Standard	Level 4 Percent Exceeding Standard	
Grade 3		All Students	111	99.11	0.90	23.42	38.74	36.94	196	98.49	0.51	24.49	37.24	37.76
		Special Education	13	100.00	7.69	69.23	23.08	0.00	29	96.67	3.45	72.41	20.69	3.45
		American Indian / Alaskan	N/A	N/A	N/A	N/A	N/A	N/A	***	***	***	***	***	***
		Asian / Pacific Islander	N/A	N/A	N/A	N/A	N/A	N/A	N/A	N/A	N/A	N/A	N/A	N/A
		Black	55	98.21	1.82	30.91	45.45	21.82	89	98.89	1.12	34.83	46.07	17.98
		Hispanic	***	***	***	***	***	***	***	***	***	***	***	***
		White	55	100.00	0.00	14.55	32.73	52.73	105	98.13	0.00	15.24	30.48	54.29
		Male	54	100.00	0.00	29.63	35.19	35.19	102	99.03	0.00	30.39	34.31	35.29
		Female	57	98.28	1.75	17.54	42.11	38.60	94	97.92	1.06	18.09	40.43	40.43
		Free / Reduced Meals	65	98.48	1.54	32.31	38.46	27.69	116	98.31	0.86	35.34	38.79	25.00
		Limited-English Proficient	N/A	N/A	N/A	N/A	N/A	N/A	N/A	N/A	N/A	N/A	N/A	N/A
		Migrant	N/A	N/A	N/A	N/A	N/A	N/A	N/A	N/A	N/A	N/A	N/A	N/A
Grade 4		All Students	110	96.49	0.00	10.00	34.55	55.45	201	95.71	0.00	13.93	31.34	54.73
		Special Education	***	***	***	***	***	***	17	85.00	0.00	58.82	35.29	5.88
		American Indian / Alaskan	N/A	N/A	N/A	N/A	N/A	N/A	***	***	***	***	***	***
		Asian / Pacific Islander	N/A	N/A	N/A	N/A	N/A	N/A	N/A	N/A	N/A	N/A	N/A	N/A
		Black	50	98.04	0.00	14.00	40.00	46.00	96	96.00	0.00	20.83	38.54	40.63
		Hispanic	N/A	N/A	N/A	N/A	N/A	N/A	***	***	***	***	***	***
		White	60	95.24	0.00	6.67	30.00	63.33	102	95.33	0.00	7.84	24.51	67.65
		Male	63	95.45	0.00	14.29	38.10	47.62	111	94.07	0.00	18.02	33.33	48.65
		Female	47	97.92	0.00	4.26	29.79	65.96	90	97.83	0.00	8.89	28.89	62.22
		Free / Reduced Meals	70	95.89	0.00	12.86	41.43	45.71	135	95.07	0.00	19.26	37.78	42.96
		Limited-English Proficient	N/A	N/A	N/A	N/A	N/A	N/A	N/A	N/A	N/A	N/A	N/A	N/A
		Migrant	N/A	N/A	N/A	N/A	N/A	N/A	N/A	N/A	N/A	N/A	N/A	N/A
Grade 5		All Students	N/A	N/A	N/A	N/A	N/A	N/A	184	96.34	2.72	26.09	32.61	38.59
		Special Education	N/A	N/A	N/A	N/A	N/A	N/A	30	88.24	16.67	50.00	26.67	6.67
		American Indian / Alaskan	N/A	N/A	N/A	N/A	N/A	N/A	***	***	***	***	***	***
		Asian / Pacific Islander	N/A	N/A	N/A	N/A	N/A	N/A	N/A	N/A	N/A	N/A	N/A	N/A
		Black	N/A	N/A	N/A	N/A	N/A	N/A	81	94.19	6.17	43.21	24.69	25.93
		Hispanic	N/A	N/A	N/A	N/A	N/A	N/A	***	***	***	***	***	***
		White	N/A	N/A	N/A	N/A	N/A	N/A	98	98.00	0.00	12.24	38.78	48.98
		Male	N/A	N/A	N/A	N/A	N/A	N/A	107	95.54	3.74	36.45	28.97	30.84
		Female	N/A	N/A	N/A	N/A	N/A	N/A	77	97.47	1.30	11.69	37.66	49.35
		Free / Reduced Meals	N/A	N/A	N/A	N/A	N/A	N/A	99	95.19	5.05	37.37	30.30	27.27
		Limited-English Proficient	N/A	N/A	N/A	N/A	N/A	N/A	***	***	***	***	***	***
		Migrant	N/A	N/A	N/A	N/A	N/A	N/A	N/A	N/A	N/A	N/A	N/A	N/A

*** = Less than 10 students tested

N/D = No Data Available

N/A = Not Applicable

N/R = Not Reported

STUDENT ACADEMIC PERFORMANCE

MATHEMATICS

SCHOOL						SYSTEM					
		Level 1	Level 2	Level 3	Level 4			Level 1	Level 2	Level 3	Level 4
Number Tested	Percent Tested	Percent Not Meeting Standard	Percent Partially Meeting Standard	Percent Meeting Standard	Percent Exceeding Standard	Number Tested	Percent Tested	Percent Not Meeting Standard	Percent Partially Meeting Standard	Percent Meeting Standard	Percent Exceeding Standard
111	99.11	9.01	26.13	32.43	32.43	196	98.49	10.20	22.45	28.57	38.78
13	100.00	53.85	30.77	15.38	0.00	29	96.67	51.72	31.03	6.90	10.34
N/A	N/A	N/A	N/A	N/A	N/A	***	***	***	***	***	***
N/A	N/A	N/A	N/A	N/A	N/A	N/A	N/A	N/A	N/A	N/A	N/A
55	98.21	16.36	32.73	30.91	20.00	89	98.89	19.10	31.46	30.34	19.10
***	***	***	***	***	***	***	***	***	***	***	***
55	100.00	1.82	18.18	34.55	45.45	105	98.13	2.86	14.29	26.67	56.19
54	100.00	7.41	25.93	37.04	29.63	102	99.03	9.80	21.57	32.35	36.27
57	98.28	10.53	26.32	28.07	35.09	94	97.92	10.64	23.40	24.47	41.49
65	98.48	12.31	27.69	41.54	18.46	116	98.31	14.66	27.59	35.34	22.41
N/A	N/A	N/A	N/A	N/A	N/A	N/A	N/A	N/A	N/A	N/A	N/A
N/A	N/A	N/A	N/A	N/A	N/A	N/A	N/A	N/A	N/A	N/A	N/A
110	96.49	1.82	20.91	31.82	45.45	200	95.24	2.00	22.50	30.50	45.00
***	***	***	***	***	***	17	85.00	17.65	52.94	17.65	11.76
N/A	N/A	N/A	N/A	N/A	N/A	***	***	***	***	***	***
N/A	N/A	N/A	N/A	N/A	N/A	N/A	N/A	N/A	N/A	N/A	N/A
50	98.04	0.00	28.00	32.00	40.00	95	95.00	2.11	27.37	38.95	31.58
N/A	N/A	N/A	N/A	N/A	N/A	***	***	***	***	***	***
60	95.24	3.33	15.00	31.67	50.00	102	95.33	1.96	18.63	23.53	55.88
63	95.45	0.00	23.81	31.75	44.44	111	94.07	0.90	27.93	26.13	45.05
47	97.92	4.26	17.02	31.91	46.81	89	96.74	3.37	15.73	35.96	44.94
70	95.89	1.43	27.14	32.86	38.57	134	94.37	2.24	29.85	32.84	35.07
N/A	N/A	N/A	N/A	N/A	N/A	N/A	N/A	N/A	N/A	N/A	N/A
N/A	N/A	N/A	N/A	N/A	N/A	N/A	N/A	N/A	N/A	N/A	N/A
N/A	N/A	N/A	N/A	N/A	N/A	184	96.34	1.09	30.43	39.67	28.80
N/A	N/A	N/A	N/A	N/A	N/A	30	88.24	6.67	73.33	10.00	10.00
N/A	N/A	N/A	N/A	N/A	N/A	***	***	***	***	***	***
N/A	N/A	N/A	N/A	N/A	N/A	N/A	N/A	N/A	N/A	N/A	N/A
N/A	N/A	N/A	N/A	N/A	N/A	81	94.19	2.47	38.27	37.04	22.22
N/A	N/A	N/A	N/A	N/A	N/A	***	***	***	***	***	***
N/A	N/A	N/A	N/A	N/A	N/A	98	98.00	0.00	22.45	42.86	34.69
N/A	N/A	N/A	N/A	N/A	N/A	107	95.54	1.87	37.38	38.32	22.43
N/A	N/A	N/A	N/A	N/A	N/A	77	97.47	0.00	20.78	41.56	37.66
N/A	N/A	N/A	N/A	N/A	N/A	99	95.19	2.02	36.36	40.40	21.21
N/A	N/A	N/A	N/A	N/A	N/A	***	***	***	***	***	***
N/A	N/A	N/A	N/A	N/A	N/A	N/A	N/A	N/A	N/A	N/A	N/A

ALABAMA READING AND MATHEMATICS TEST

The Alabama Reading and Mathematics Test provides an assessment of students' mastery of the content contained in the Alabama Course of Study. The Reading and Mathematics Test was given in grades three through eight.

*** = Less than 10 students tested

N/D = No Data Available

N/A = Not Applicable

N/R = Not Reported

STUDENT ACADEMIC PERFORMANCE

		READING											
		SCHOOL						SYSTEM					
			Level 1	Level 2	Level 3	Level 4			Level 1	Level 2	Level 3	Level 4	
		Number Tested	Percent Tested	Percent Not Meeting Standard	Percent Partially Meeting Standard	Percent Meeting Standard	Percent Exceeding Standard	Number Tested	Percent Tested	Percent Not Meeting Standard	Percent Partially Meeting Standard	Percent Meeting Standard	Percent Exceeding Standard
Grade 6													
All Students		N/A	N/A	N/A	N/A	N/A	N/A	212	98.15	1.42	20.75	26.42	51.42
Special Education		N/A	N/A	N/A	N/A	N/A	N/A	30	100.00	10.00	66.67	13.33	10.00
American Indian / Alaskan		N/A	N/A	N/A	N/A	N/A	N/A	N/A	N/A	N/A	N/A	N/A	N/A
Asian / Pacific Islander		N/A	N/A	N/A	N/A	N/A	N/A	***	***	***	***	***	***
Black		N/A	N/A	N/A	N/A	N/A	N/A	98	98.00	3.06	30.61	31.63	34.69
Hispanic		N/A	N/A	N/A	N/A	N/A	N/A	***	***	***	***	***	***
White		N/A	N/A	N/A	N/A	N/A	N/A	105	98.13	0.00	11.43	20.00	68.57
Male		N/A	N/A	N/A	N/A	N/A	N/A	112	98.25	0.89	25.89	27.68	45.54
Female		N/A	N/A	N/A	N/A	N/A	N/A	100	99.01	2.00	15.00	25.00	58.00
Free / Reduced Meals		N/A	N/A	N/A	N/A	N/A	N/A	114	98.28	2.63	26.32	31.58	39.47
Limited-English Proficient		N/A	N/A	N/A	N/A	N/A	N/A	***	***	***	***	***	***
Migrant		N/A	N/A	N/A	N/A	N/A	N/A	N/A	N/A	N/A	N/A	N/A	N/A
Grade 7													
All Students		N/A	N/A	N/A	N/A	N/A	N/A	208	96.74	0.96	26.92	37.02	35.10
Special Education		N/A	N/A	N/A	N/A	N/A	N/A	20	86.96	5.00	85.00	5.00	5.00
American Indian / Alaskan		N/A	N/A	N/A	N/A	N/A	N/A	N/A	N/A	N/A	N/A	N/A	N/A
Asian / Pacific Islander		N/A	N/A	N/A	N/A	N/A	N/A	***	***	***	***	***	***
Black		N/A	N/A	N/A	N/A	N/A	N/A	85	96.59	2.35	36.47	43.53	17.65
Hispanic		N/A	N/A	N/A	N/A	N/A	N/A	***	***	***	***	***	***
White		N/A	N/A	N/A	N/A	N/A	N/A	121	96.80	0.00	20.66	32.23	47.11
Male		N/A	N/A	N/A	N/A	N/A	N/A	100	96.15	2.00	33.00	34.00	31.00
Female		N/A	N/A	N/A	N/A	N/A	N/A	108	97.30	0.00	21.30	39.81	38.89
Free / Reduced Meals		N/A	N/A	N/A	N/A	N/A	N/A	122	95.31	1.64	35.25	37.70	25.41
Limited-English Proficient		N/A	N/A	N/A	N/A	N/A	N/A	***	***	***	***	***	***
Migrant		N/A	N/A	N/A	N/A	N/A	N/A	N/A	N/A	N/A	N/A	N/A	N/A
Grade 8													
All Students		N/A	N/A	N/A	N/A	N/A	N/A	211	97.24	1.42	32.23	32.70	33.65
Special Education		N/A	N/A	N/A	N/A	N/A	N/A	21	91.30	9.52	76.19	9.52	4.76
American Indian / Alaskan		N/A	N/A	N/A	N/A	N/A	N/A	***	***	***	***	***	***
Asian / Pacific Islander		N/A	N/A	N/A	N/A	N/A	N/A	***	***	***	***	***	***
Black		N/A	N/A	N/A	N/A	N/A	N/A	92	94.85	3.26	52.17	30.43	14.13
Hispanic		N/A	N/A	N/A	N/A	N/A	N/A	***	***	***	***	***	***
White		N/A	N/A	N/A	N/A	N/A	N/A	114	99.13	0.00	16.67	35.09	48.25
Male		N/A	N/A	N/A	N/A	N/A	N/A	105	94.59	1.90	40.00	27.62	30.48
Female		N/A	N/A	N/A	N/A	N/A	N/A	106	100.00	0.94	24.53	37.74	36.79
Free / Reduced Meals		N/A	N/A	N/A	N/A	N/A	N/A	101	94.39	0.99	49.50	30.69	18.81
Limited-English Proficient		N/A	N/A	N/A	N/A	N/A	N/A	N/A	N/A	N/A	N/A	N/A	N/A
Migrant		N/A	N/A	N/A	N/A	N/A	N/A	N/A	N/A	N/A	N/A	N/A	N/A

*** = Less than 10 students tested

N/D = No Data Available

N/A = Not Applicable

N/R = Not Reported

STUDENT ACADEMIC PERFORMANCE

MATHEMATICS

SCHOOL						SYSTEM					
		Level 1	Level 2	Level 3	Level 4			Level 1	Level 2	Level 3	Level 4
Number Tested	Percent Tested	Percent Not Meeting Standard	Percent Partially Meeting Standard	Percent Meeting Standard	Percent Exceeding Standard	Number Tested	Percent Tested	Percent Not Meeting Standard	Percent Partially Meeting Standard	Percent Meeting Standard	Percent Exceeding Standard
N/A	N/A	N/A	N/A	N/A	N/A	212	98.15	0.00	36.79	46.70	16.51
N/A	N/A	N/A	N/A	N/A	N/A	30	100.00	0.00	83.33	13.33	3.33
N/A	N/A	N/A	N/A	N/A	N/A	N/A	N/A	N/A	N/A	N/A	N/A
N/A	N/A	N/A	N/A	N/A	N/A	***	***	***	***	***	***
N/A	N/A	N/A	N/A	N/A	N/A	97	97.00	0.00	60.82	32.99	6.19
N/A	N/A	N/A	N/A	N/A	N/A	***	***	***	***	***	***
N/A	N/A	N/A	N/A	N/A	N/A	106	99.07	0.00	17.92	56.60	25.47
N/A	N/A	N/A	N/A	N/A	N/A	112	98.25	0.00	41.96	41.07	16.96
N/A	N/A	N/A	N/A	N/A	N/A	100	99.01	0.00	31.00	53.00	16.00
N/A	N/A	N/A	N/A	N/A	N/A	114	98.28	0.00	50.00	41.23	8.77
N/A	N/A	N/A	N/A	N/A	N/A	***	***	***	***	***	***
N/A	N/A	N/A	N/A	N/A	N/A	N/A	N/A	N/A	N/A	N/A	N/A
N/A	N/A	N/A	N/A	N/A	N/A	208	96.74	0.00	43.27	41.35	15.38
N/A	N/A	N/A	N/A	N/A	N/A	20	86.96	0.00	95.00	5.00	0.00
N/A	N/A	N/A	N/A	N/A	N/A	N/A	N/A	N/A	N/A	N/A	N/A
N/A	N/A	N/A	N/A	N/A	N/A	***	***	***	***	***	***
N/A	N/A	N/A	N/A	N/A	N/A	85	96.59	0.00	56.47	40.00	3.53
N/A	N/A	N/A	N/A	N/A	N/A	***	***	***	***	***	***
N/A	N/A	N/A	N/A	N/A	N/A	121	96.80	0.00	34.71	41.32	23.97
N/A	N/A	N/A	N/A	N/A	N/A	100	96.15	0.00	50.00	38.00	12.00
N/A	N/A	N/A	N/A	N/A	N/A	108	97.30	0.00	37.04	44.44	18.52
N/A	N/A	N/A	N/A	N/A	N/A	122	95.31	0.00	50.00	40.16	9.84
N/A	N/A	N/A	N/A	N/A	N/A	***	***	***	***	***	***
N/A	N/A	N/A	N/A	N/A	N/A	N/A	N/A	N/A	N/A	N/A	N/A
N/A	N/A	N/A	N/A	N/A	N/A	212	97.70	0.47	33.49	54.25	11.79
N/A	N/A	N/A	N/A	N/A	N/A	21	91.30	0.00	61.90	33.33	4.76
N/A	N/A	N/A	N/A	N/A	N/A	***	***	***	***	***	***
N/A	N/A	N/A	N/A	N/A	N/A	***	***	***	***	***	***
N/A	N/A	N/A	N/A	N/A	N/A	93	95.88	1.08	49.46	47.31	2.15
N/A	N/A	N/A	N/A	N/A	N/A	***	***	***	***	***	***
N/A	N/A	N/A	N/A	N/A	N/A	114	99.13	0.00	21.05	58.77	20.18
N/A	N/A	N/A	N/A	N/A	N/A	106	95.50	0.94	35.85	52.83	10.38
N/A	N/A	N/A	N/A	N/A	N/A	106	100.00	0.00	31.13	55.66	13.21
N/A	N/A	N/A	N/A	N/A	N/A	102	95.33	0.00	45.10	48.04	6.86
N/A	N/A	N/A	N/A	N/A	N/A	N/A	N/A	N/A	N/A	N/A	N/A
N/A	N/A	N/A	N/A	N/A	N/A	N/A	N/A	N/A	N/A	N/A	N/A

ALABAMA READING AND MATHEMATICS TEST

The Alabama Reading and Mathematics Test provides an assessment of students' mastery of the content contained in the Alabama Course of Study. The Reading and Mathematics Test was given in grades three through eight.

*** = Less than 10 students tested

N/D = No Data Available

N/A = Not Applicable

N/R = Not Reported

STUDENT ACADEMIC PERFORMANCE

Alabama Alternate Assessment 2005

The Alabama Alternate Assessment is designed for students with disabilities whose Individualized Education Program [IEP] team determines that the student will not participate in the regular state assessments.

READING												
SCHOOL						SYSTEM						
		Level 1	Level 2	Level 3	Level 4			Level 1	Level 2	Level 3	Level 4	
Number Tested	Percent Tested	Percent Not Meeting Standard	Percent Partially Meeting Standard	Percent Meeting Standard	Percent Exceeding Standard	Number Tested	Percent Tested	Percent Not Meeting Standard	Percent Partially Meeting Standard	Percent Meeting Standard	Percent Exceeding Standard	
All Students	N/A	N/A	N/A	N/A	N/A	N/A	22	1.18	0.00	27.27	36.36	36.36

MATHEMATICS												
SCHOOL						SYSTEM						
		Level 1	Level 2	Level 3	Level 4			Level 1	Level 2	Level 3	Level 4	
Number Tested	Percent Tested	Percent Not Meeting Standard	Percent Partially Meeting Standard	Percent Meeting Standard	Percent Exceeding Standard	Number Tested	Percent Tested	Percent Not Meeting Standard	Percent Partially Meeting Standard	Percent Meeting Standard	Percent Exceeding Standard	
All Students	N/A	N/A	N/A	N/A	N/A	N/A	22	1.18	0.00	22.73	31.82	45.45

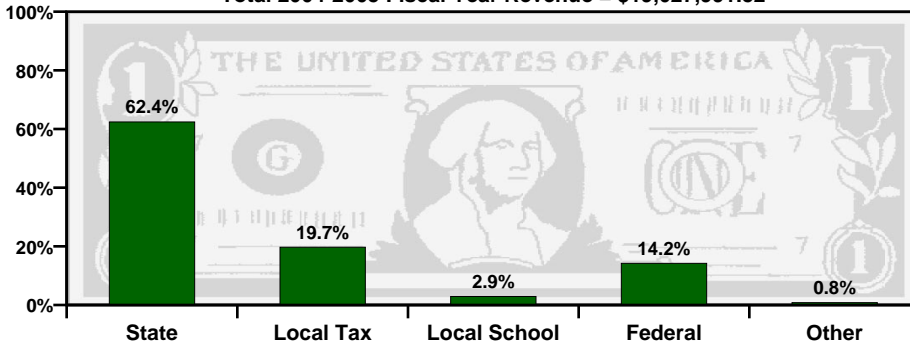
Alabama Direct Assessment of Writing 2005

Alabama students in grades five, seven, and ten are given the Alabama Direct Assessment of Writing each year to measure their writing skills. This table shows how well students met the performance standard of this test.

SCHOOL						SYSTEM						
		Level 1	Level 2	Level 3	Level 4			Level 1	Level 2	Level 3	Level 4	
Number Tested	Percent Tested	Percent Not Meeting Standard	Percent Partially Meeting Standard	Percent Meeting Standard	Percent Exceeding Standard	Number Tested	Percent Tested	Percent Not Meeting Standard	Percent Partially Meeting Standard	Percent Meeting Standard	Percent Exceeding Standard	
Grade 5	N/A	N/A	N/A	N/A	N/A	N/A	184	96.34	7.61	51.63	35.33	5.43
Grade 7	N/A	N/A	N/A	N/A	N/A	N/A	206	95.81	5.83	32.04	51.46	10.68
Grade 10	N/A	N/A	N/A	N/A	N/A	N/A	199	95.81	1.51	21.11	58.29	19.10

TAXPAYERS' REPORT - FISCAL YEAR 2004

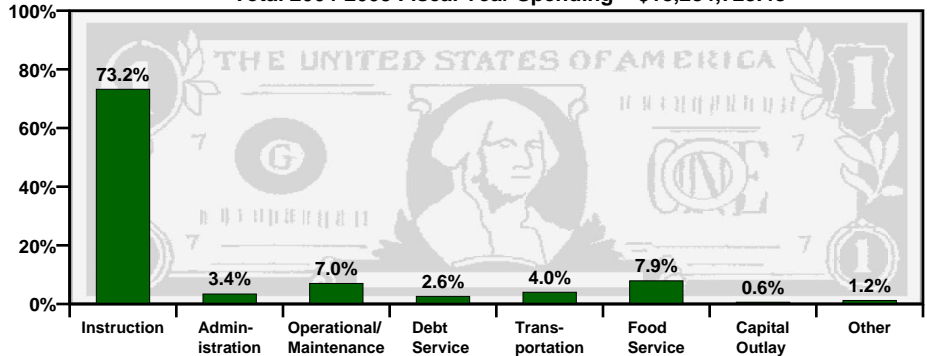
Total 2004-2005 Fiscal Year Revenue = \$19,027,991.52



Sources of School System Revenues

School System's Use of Funds

Total 2004-2005 Fiscal Year Spending = \$18,284,723.48



SOURCE of REVENUE	AMOUNT
Local School Revenue	\$555,542.01
Local Capital Projects Revenue	\$57,776.00
Other Local Revenue (includes local taxes)	\$3,685,480.88
Total Local Revenue	\$4,298,798.89

Local Revenue Breakdown

This table provides a breakdown of local revenues for fiscal year 2004. The revenue from local school projects / activities and the capital projects fund have been itemized to provide a more complete analysis of local fund sources.

Mills Equivalent

This is the total amount of revenue collected locally for public school purposes, divided by the value of one regular system mill of ad valorem tax. The state average is 31.37 mills equivalent.

This System	Grade
38.63	B+

Spending per Student

The table below shows the spending per student for this school system. The letter grade compares the system's per student spending to the state, southeast, and nation.

Year	Amount	State	Southeast	Nation
2002-2003	\$6,356.10	C	C-	D
2003-2004	\$6,254.25	C-	D-	D-

A = Excellent

B = Good

C = Average

D = Poor

F = Fail

