



# State Board of Education School Report Card for 2005-2006

## Pike County

### State Board of Education Members

Gov. Bob Riley, Board President  
Randy McKinney, President Pro Tem, District 1  
Betty Peters, District 2  
Stephanie Bell, District 3  
Dr. Ethel Hall, Vice President Emerita, District 4  
Ella Bell, District 5  
David F. Byers, Jr., District 6  
Sandra Ray, Vice President, District 7  
Dr. Mary Jane Caylor, District 8  
Joseph B. Morton, Superintendent of Education

### Superintendent

Dr. Samuel Mark Bazzell

### School Board Members

Mrs. Linda Steed  
Rev. Herbert Reynolds  
Mr. Adam Register  
Mr. Wyman Botts  
Mr. William Greg Price  
Rev. Earnest Green

Pike County  
101 W. Love Street  
Troy, AL 36081-2613  
(334) 566-1850

*Report cards are prepared by the Alabama Department of Education.  
For more information including a glossary of terms, grading scales, and  
detailed data, visit the SDE Web site Accountability Reporting System at:  
<http://www.alsde.edu/Accountability/preAccountability.asp>*



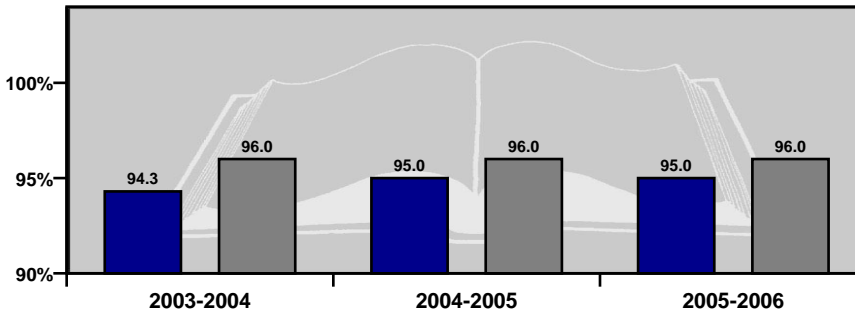
# GENERAL INFORMATION

## Average Daily Membership

This is the average number of students on attendance rolls during the first 20 days of school after Labor Day.

Year	ADM
2005-2006	2,173.2
2004-2005	2,143.8
2003-2004	2,135.1

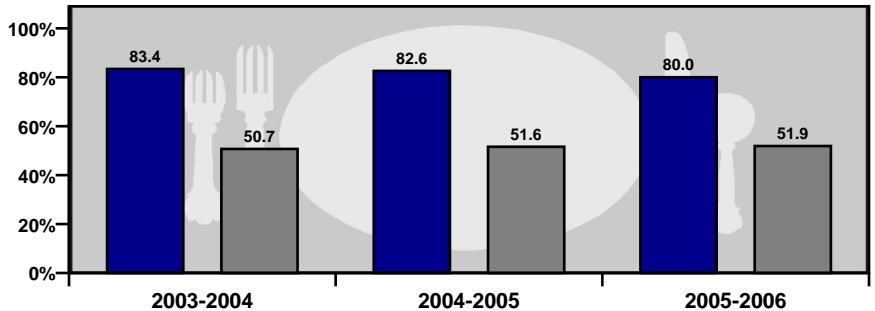
■ % System    ■ % State



## Average Daily Attendance

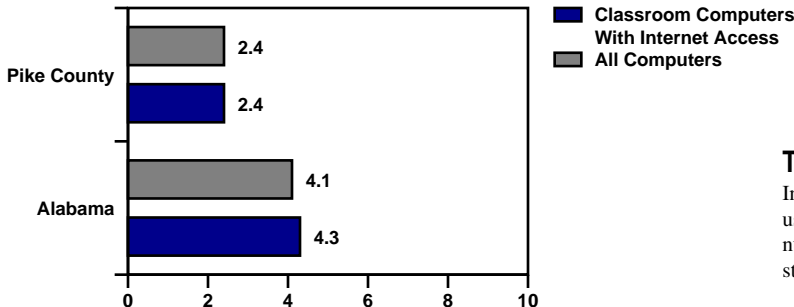
This is the percent of students that attend school each day.

■ % System    ■ % State



## Students Eligible for Free or Reduced Price Meals

This is the percent of students that applied for and were approved as reported on the Fall Attendance Report. It is an indicator of poverty.



## Technology

Internet access and computer use in schools. A lower number indicates greater student access to technology.

# GENERAL INFORMATION

## Teacher Qualifications

This table shows the percentage of teachers holding each level of certification as issued by the Alabama Department of Education for this school system in 2005–2006.

6-Year (Class AA) through Doctorate	Master's Degree (Class A)	Bachelor's Degree (Class B)	Alternative	Emergency
8.1%	49.4%	37.8%	2.9%	1.7%

Percentage of All Elementary and Secondary Teachers with Alternative or Emergency Certification	4.7%
---	------

## Staffing

Each school is staffed with full- and part-time faculty and staff. In 2005-2006, this school system employed the following professionals.

	System	State
Teachers	151.0	47,319
Counselors	6.4	1,814
Librarians	5.3	1,404
Administrators	9.0	2,601
Nurses	2.0	765
Instruction Assistants	16.0	6,774
Other (certified)	8.6	1,778
Support Staff	115.5	29,083

## Safety & Discipline

The following table shows the types of discipline problems that have occurred at this school system and what actions were taken in 2005-2006.

Type of Incident	Number of Incidents Reported	Action Taken		
		Suspension	Expulsion	Sent to Alternative School
Assault	0	0	0	0
Bomb Threat	0	0	0	0
Drug Related	9	7	0	2
Weapon Related	11	12	0	0

## Career / Tech Education

Business/Industry Certification (BIC) is a means of assisting career/technical education programs to improve by setting standards against which all programs can measure progress. The goal is for all programs to remain in compliance with business/industry standards. The number indicates the percentage of programs that remain in compliance. The letter grade measures whether or not these programs are on track to meet that goal.

Programs Achieving Business/Industry Certification	2005-2006	
	Rate	Grade
	90.00%	B

## Percent of High School Students Enrolled in Career / Tech Classes

This is the percentage of students in Grades 9-12 who are enrolled in career and technical education coursework as compared to the overall student population in Grades 9-12.

Percent of Students Enrolled in Career / Tech Classes 2005-2006	System	State
	56.41%	53.87%

## Percent of Positive Placements in Career / Tech

This represents the percentage of students who completed a career/technical program of studies and took a job in a related field or enrolled in post-secondary studies.

Percent of Positive Placements 2004-2005	System	State
	62.86%	84.87%

# GENERAL INFORMATION

## Highly Qualified Teachers

This is the percent of teachers that are teaching and the percent of classes taught in a core subject for which the teacher is highly qualified by the State of Alabama as required by the federal legislation known as: No Child Left Behind.

CLASSES	Total Classes		Current Percentage Taught By Highly Qualified Teachers		Current Percentage Not Taught By Highly Qualified Teachers	
	2004-2005	2005-2006	2004-2005	2005-2006	2004-2005	2005-2006
ALL SCHOOLS	2004-2005	2005-2006	2004-2005	2005-2006	2004-2005	2005-2006
Elementary Classes	295	288	94.2	99.3	5.8	0.7
Secondary Classes	166	131	86.8	85.5	13.2	14.5
TOTAL CLASSES	461	419	91.5	95.0	8.5	5.0
LOW POVERTY SCHOOLS	2004-2005	2005-2006	2004-2005	2005-2006	2004-2005	2005-2006
Elementary Classes	No Data	No Data	No Data	No Data	No Data	No Data
Secondary Classes	No Data	No Data	No Data	No Data	No Data	No Data
TOTAL CLASSES	No Data	No Data	No Data	No Data	No Data	No Data
HIGH POVERTY SCHOOLS	2004-2005	2005-2006	2004-2005	2005-2006	2004-2005	2005-2006
Elementary Classes	295	114	94.2	100	5.8	0.0
Secondary Classes	166	305	86.8	93.1	13.2	6.9
TOTAL CLASSES	461	419	91.5	95.0	8.5	5.0

TEACHERS	Total Teachers		Current Percentage Highly Qualified Teachers		Current Percentage Not Highly Qualified Teachers	
	2004-2005	2005-2006	2004-2005	2005-2006	2004-2005	2005-2006
ALL SCHOOLS	2004-2005	2005-2006	2004-2005	2005-2006	2004-2005	2005-2006
Elementary Teachers	75	68	93.3	98.5	6.7	1.5
Secondary Teachers	35	48	82.9	83.3	17.1	16.7
TOTAL TEACHERS	110	116	90.0	92.2	10.0	7.8
LOW POVERTY SCHOOLS	2004-2005	2005-2006	2004-2005	2005-2006	2004-2005	2005-2006
Elementary Teachers	No Data	No Data	No Data	No Data	No Data	No Data
Secondary Teachers	No Data	No Data	No Data	No Data	No Data	No Data
TOTAL TEACHERS	No Data	No Data	No Data	No Data	No Data	No Data
HIGH POVERTY SCHOOLS	2004-2005	2005-2006	2004-2005	2005-2006	2004-2005	2005-2006
Elementary Teachers	75	27	93.3	100	6.7	0.0
Secondary Teachers	35	89	82.9	89.9	17.1	10.1
TOTAL TEACHERS	110	116	90.0	92.2	10.0	7.8

High Quality Professional Development							
Total Surveyed		Received High Quality Professional Development		Did Not Receive High Quality Professional Development		PCT With Professional Development	
2004-05	2005-06	2004-05	2005-06	2004-05	2005-06	2004-05	2005-06
23	103	23	103	0	0	100.00	100.00

Instructional Paraprofessionals in Title I-Funded Schools									
Total Instructional Paraprofessionals		Total Qualified		Total Not Qualified		PCT Qualified			
2004-05	2005-06	2004-05	2005-06	2004-05	2005-06	2004-05	2005-06		
14	5	13	5	1	0	92.86	100.00		

# STATE ACCOUNTABILITY

## Adequate Yearly Progress Status for 2006-2007 Based on School Year 2005-2006 Data

State Accountability in Alabama is based on the federal law known as the “No Child Left Behind” Act (NCLB) of 2001. NCLB uses the term Adequate Yearly Progress (AYP) to describe whether a school or system has met its annual accountability goals.

### COMPONENTS OF AYP

1. Annual Goals for Reading and Mathematics
  - Percentage of students scoring proficient or higher
2. Participation Rate
  - Percentage of students participating in assessments
3. Indicators Affecting Academic Proficiency
  - Attendance
  - Graduation Rate (or improvement on the Dropout Rate)

### ASSESSMENTS USED IN DETERMINING AYP

- Alabama Reading and Mathematics Test (ARMT)
  - Reading: Grades 3–8
  - Mathematics: Grades 3–8
- Alabama High School Graduation Exam (AHSGE)
  - Reading: Grade 11
  - Mathematics: Grade 11
- Alabama Alternate Assessment (AAA)
  - Reading: Grades 3–8 and 11
  - Mathematics: Grades 3–8 and 11

For more detail on the Alabama Accountability System, please reference the Accountability Interpretive Guide which can be found on the SDE Web site:

<http://www.alsde.edu/Accountability/preAccountability.asp>

Select the Accountability Reporting option on the home page. Then request the School Year: 2005-2006 Report: 2006 Interpretive Guide for State Accountability

## Adequate Yearly Progress Status for 2006-2007 Based on School Year 2005-2006 Data — Summary

2006–2007 AYP Status: Made AYP

School Improvement Status: Not in School Improvement

	3–5 Grade Span	6–8 Grade Span	High School Grade Span	System AYP*
Met Reading AYP	Yes	Yes	Yes	Yes
Met Mathematics AYP	Yes	Yes	Yes	Yes
Additional Academic Indicator AYP	Yes	Yes	No	Yes

~ Not reported, less than 10 students (protects confidentiality).

NA = Not in AYP, less than 40 students (ensures reliability).

\* AYP is met if the goal is met or the goal is within the confidence interval (ensures reliability).

\*\* AYP is met if the goal is met or there is improvement from the previous year.

# STATE ACCOUNTABILITY

## Adequate Yearly Progress Status for 2006-2007

Based on School Year 2005-2006 Data — Report for 03-05 Grade Span

*This System Grade Span met 21 AYP Goals out of 21 (100.00%)*

### READING

2006–2007 AYP Status: Made AYP

Student Group	Percent Participation Goal = 95.00%	Met Participation Goal	Proficiency Index Goal = 0.00	Met Proficiency Goal*
All Students	100	Yes	13.27	Yes
Special Education	100	Yes	-21.39	Yes
American Indian/Alaskan	100	NA	~	NA
Asian/Pacific Islander	100	NA	~	NA
Black	100	Yes	9.59	Yes
Hispanic	100	NA	~	NA
White	100	Yes	16.60	Yes
Limited-English Proficient	100	NA	~	NA
Free/Reduced Meals	100	Yes	11.63	Yes
Displaced	83	NA	No Data	No Data

### MATHEMATICS

2006–2007 AYP Status: Made AYP

Student Group	Percent Participation Goal = 95.00%	Met Participation Goal	Proficiency Index Goal = 0.00	Met Proficiency Goal*
All Students	100	Yes	23.52	Yes
Special Education	100	Yes	-2.74	Yes
American Indian/Alaskan	100	NA	~	NA
Asian/Pacific Islander	100	NA	~	NA
Black	100	Yes	18.90	Yes
Hispanic	100	NA	~	NA
White	100	Yes	27.72	Yes
Limited-English Proficient	100	NA	~	NA
Free/Reduced Meals	100	Yes	22.08	Yes
Displaced	83	NA	No Data	No Data

#### Additional Academic Indicators

Student Group	Attendance Rate Goal = 95.00%	Attendance Rate Previous Year	Met Attendance AYP*	Graduation Rate Goal = 90.00%	Graduation Rate Previous Year	Met Graduation Rate AYP**
All Students	96.66	N/A	Yes	N/A	N/A	N/A

\* Not reported, less than 10 students (protects confidentiality).  
 NA = Not in AYP, less than 40 students (ensures reliability).

\* AYP is met if the goal is met or the goal is within the confidence interval (ensures reliability).  
 \*\* AYP is met if the goal is met or there is improvement from the previous year.

# STATE ACCOUNTABILITY

## Adequate Yearly Progress Status for 2006-2007 Based on School Year 2005-2006 Data — Report for 06-08 Grade Span

*This System Grade Span met 21 AYP Goals out of 21 (100.00%)*

### READING

2006–2007 AYP Status: Made AYP

Student Group	Percent Participation Goal = 95.00%	Met Participation Goal	Proficiency Index Goal = 0.00	Met Proficiency Goal*
All Students	100	Yes	19.79	Yes
Special Education	100	Yes	-.47	Yes
American Indian/Alaskan	100	NA	~	NA
Asian/Pacific Islander	100	NA	~	NA
Black	100	Yes	17.35	Yes
Hispanic	100	NA	~	NA
White	100	Yes	22.24	Yes
Limited-English Proficient	No Data	No Data	No Data	No Data
Free/Reduced Meals	100	Yes	19.19	Yes
Displaced	100	NA	No Data	No Data

### MATHEMATICS

2006–2007 AYP Status: Made AYP

Student Group	Percent Participation Goal = 95.00%	Met Participation Goal	Proficiency Index Goal = 0.00	Met Proficiency Goal*
All Students	100	Yes	33.96	Yes
Special Education	100	Yes	21.15	Yes
American Indian/Alaskan	100	NA	~	NA
Asian/Pacific Islander	100	NA	~	NA
Black	100	Yes	30.59	Yes
Hispanic	100	NA	~	NA
White	100	Yes	37.22	Yes
Limited-English Proficient	No Data	No Data	No Data	No Data
Free/Reduced Meals	100	Yes	33.94	Yes
Displaced	100	NA	No Data	No Data

#### Additional Academic Indicators

Student Group	Attendance Rate Goal = 95.00%	Attendance Rate Previous Year	Met Attendance AYP*	Graduation Rate Goal = 90.00%	Graduation Rate Previous Year	Met Graduation Rate AYP**
All Students	94.73	N/A	Yes	N/A	N/A	N/A

~ Not reported, less than 10 students (protects confidentiality).  
NA = Not in AYP, less than 40 students (ensures reliability).

\* AYP is met if the goal is met or the goal is within the confidence interval (ensures reliability).  
\*\* AYP is met if the goal is met or there is improvement from the previous year.



# STATE ACCOUNTABILITY

## Adequate Yearly Progress Status for 2006-2007 Based on School Year 2005-2006 Data — Report for High School

*This System Grade Span met 16 AYP Goals out of 17 (94.12%)*

### READING

2006–2007 AYP Status: Made AYP

Student Group	Percent Participation Goal = 95.00%	Met Participation Goal	Proficiency Index Goal = 0.00	Met Proficiency Goal*
All Students	99	Yes	10.57	Yes
Special Education	100	NA	-23.29	NA
American Indian/Alaskan	No Data	No Data	No Data	No Data
Asian/Pacific Islander	100	NA	~	NA
Black	100	Yes	7.10	Yes
Hispanic	100	NA	~	NA
White	97	Yes	15.07	Yes
Limited-English Proficient	No Data	No Data	No Data	No Data
Free/Reduced Meals	98	Yes	8.86	Yes
Displaced	No Data	No Data	No Data	No Data

### MATHEMATICS

2006–2007 AYP Status: Made AYP

Student Group	Percent Participation Goal = 95.00%	Met Participation Goal	Proficiency Index Goal = 0.00	Met Proficiency Goal*
All Students	99	Yes	20.02	Yes
Special Education	100	NA	-15.86	NA
American Indian/Alaskan	No Data	No Data	No Data	No Data
Asian/Pacific Islander	100	NA	~	NA
Black	100	Yes	17.41	Yes
Hispanic	100	NA	~	NA
White	97	Yes	23.30	Yes
Limited-English Proficient	No Data	No Data	No Data	No Data
Free/Reduced Meals	98	Yes	18.76	Yes
Displaced	No Data	No Data	No Data	No Data

#### Additional Academic Indicators

Student Group	Attendance Rate Goal = 95.00%	Attendance Rate Previous Year	Met Attendance AYP*	Graduation Rate Goal = 90.00%	Graduation Rate Previous Year	Met Graduation Rate AYP**
All Students	N/A	N/A	N/A	59.56	N/A	No

~ Not reported, less than 10 students (protects confidentiality).  
NA = Not in AYP, less than 40 students (ensures reliability).

\* AYP is met if the goal is met or the goal is within the confidence interval (ensures reliability).  
\*\* AYP is met if the goal is met or there is improvement from the previous year.

# STUDENT ACADEMIC PERFORMANCE

## READING

	READING											
	SYSTEM						STATE					
			Level 1	Level 2	Level 3	Level 4			Level 1	Level 2	Level 3	Level 4
Grade 3	Number Tested	Percent Tested	Percent Not Meeting Standard	Percent Partially Meeting Standard	Percent Meeting Standard	Percent Exceeding Standard	Number Tested	Percent Tested	Percent Not Meeting Standard	Percent Partially Meeting Standard	Percent Meeting Standard	Percent Exceeding Standard
All Students	133	99.25	3.01	19.55	36.09	41.35	55354	98.13	1.45	14.90	36.55	47.10
Special Education	18	94.74	22.22	55.56	16.67	5.56	6343	91.75	9.36	44.22	30.88	15.53
American Indian / Alaskan	N/A	N/A	N/A	N/A	N/A	N/A	418	98.58	0.72	8.37	35.41	55.50
Asian / Pacific Islander	N/A	N/A	N/A	N/A	N/A	N/A	587	93.77	0.85	6.81	25.04	67.29
Black	65	100.00	4.62	20.00	35.38	40.00	19403	97.93	2.03	23.17	44.67	30.13
Hispanic	***	***	***	***	***	***	1828	95.06	4.38	26.42	39.39	29.81
White	65	98.48	1.54	16.92	36.92	44.62	32994	98.51	0.97	9.63	31.83	57.57
Male	66	98.51	6.06	24.24	28.79	40.91	28460	97.92	2.10	18.30	37.24	42.36
Female	67	100.00	0.00	14.93	43.28	41.79	26894	98.35	0.76	11.30	35.83	52.12
Free / Reduced Meals	103	99.04	1.94	21.36	39.81	36.89	30755	97.69	2.15	21.04	42.93	33.88
Limited-English Proficient	***	***	***	***	***	***	1437	92.95	5.29	30.97	39.87	23.87
Migrant	***	***	***	***	***	***	200	99.01	3.00	30.50	43.50	23.00
Displaced	***	***	***	***	***	***	299	93.15	3.01	17.39	38.13	41.47
Grade 4												
All Students	168	100.00	1.79	19.64	36.90	41.67	54822	98.29	0.43	15.16	32.03	52.37
Special Education	22	100.00	13.64	59.09	22.73	4.55	6333	91.82	3.17	55.03	26.86	14.94
American Indian / Alaskan	***	***	***	***	***	***	470	98.12	0.00	12.77	23.62	63.62
Asian / Pacific Islander	N/A	N/A	N/A	N/A	N/A	N/A	549	95.31	0.73	6.74	21.86	70.67
Black	80	100.00	2.50	23.75	51.25	22.50	19375	98.02	0.69	23.50	41.38	34.43
Hispanic	***	***	***	***	***	***	1648	95.04	0.36	26.94	39.68	33.01
White	85	100.00	1.18	15.29	23.53	60.00	32679	98.67	0.29	9.80	26.41	63.50
Male	81	100.00	1.23	28.40	27.16	43.21	28273	97.97	0.63	19.02	33.24	47.12
Female	87	100.00	2.30	11.49	45.98	40.23	26549	98.62	0.23	11.05	30.75	57.96
Free / Reduced Meals	136	100.00	2.21	23.53	38.24	36.03	30035	97.90	0.65	21.86	39.23	38.26
Limited-English Proficient	***	***	***	***	***	***	1272	92.85	0.71	32.23	41.12	25.94
Migrant	***	***	***	***	***	***	186	94.90	1.08	25.81	39.78	33.33
Displaced	***	***	***	***	***	***	327	95.89	0.92	20.49	33.94	44.65
Grade 5												
All Students	191	98.96	5.24	23.04	35.08	36.65	55864	98.18	2.07	17.22	31.01	49.70
Special Education	26	92.86	38.46	30.77	26.92	3.85	6526	91.29	14.22	50.74	23.20	11.84
American Indian / Alaskan	***	***	***	***	***	***	543	98.55	1.29	14.55	27.26	56.91
Asian / Pacific Islander	***	***	***	***	***	***	519	95.76	0.19	8.67	21.00	70.13
Black	94	98.95	6.38	29.79	43.62	20.21	20138	98.07	2.89	26.01	38.57	32.54
Hispanic	***	***	***	***	***	***	1591	93.70	5.28	26.15	32.94	35.64
White	92	98.92	4.35	17.39	27.17	51.09	32984	98.52	1.46	11.63	26.50	60.40
Male	105	99.06	8.57	29.52	29.52	32.38	28774	97.93	2.89	21.03	31.56	44.51
Female	86	98.85	1.16	15.12	41.86	41.86	27090	98.44	1.20	13.17	30.42	55.21
Free / Reduced Meals	148	98.67	6.08	27.03	35.14	31.76	30465	97.71	3.19	24.18	36.80	35.83
Limited-English Proficient	***	***	***	***	***	***	1114	91.01	6.82	34.47	33.12	25.58
Migrant	***	***	***	***	***	***	173	96.65	7.51	29.48	28.90	34.10
Displaced	***	***	***	***	***	***	273	95.45	1.83	16.85	34.43	46.89

\*\*\* = Less than 10 students tested

N/D = No Data Available

N/A = Not Applicable

N/R = Not Reported

# STUDENT ACADEMIC PERFORMANCE

## MATHEMATICS

SYSTEM						STATE					
		Level 1	Level 2	Level 3	Level 4			Level 1	Level 2	Level 3	Level 4
Number Tested	Percent Tested	Percent Not Meeting Standard	Percent Partially Meeting Standard	Percent Meeting Standard	Percent Exceeding Standard	Number Tested	Percent Tested	Percent Not Meeting Standard	Percent Partially Meeting Standard	Percent Meeting Standard	Percent Exceeding Standard
133	99.25	3.76	13.53	30.08	52.63	55407	98.22	4.45	17.76	29.00	48.79
18	94.74	22.22	38.89	16.67	22.22	6327	91.52	21.46	33.63	23.60	21.31
N/A	N/A	N/A	N/A	N/A	N/A	419	98.82	2.86	13.37	24.58	59.19
N/A	N/A	N/A	N/A	N/A	N/A	613	97.92	0.49	8.81	19.25	71.45
65	100.00	6.15	15.38	29.23	49.23	19399	97.91	7.07	25.63	32.82	34.49
***	***	***	***	***	***	1869	97.19	8.03	25.41	30.71	35.85
65	98.48	1.54	12.31	30.77	55.38	32982	98.47	2.80	12.91	26.87	57.42
66	98.51	7.58	18.18	18.18	56.06	28474	97.97	5.49	18.31	28.46	47.75
67	100.00	0.00	8.96	41.79	49.25	26933	98.49	3.35	17.19	29.57	49.90
103	99.04	2.91	14.56	33.98	48.54	30783	97.78	6.48	23.75	32.12	37.65
***	***	***	***	***	***	1508	97.54	8.49	27.59	31.10	32.82
***	***	***	***	***	***	197	97.52	9.14	22.34	35.53	32.99
***	***	***	***	***	***	296	92.21	4.73	23.99	25.68	45.61
168	100.00	2.38	22.02	28.57	47.02	54832	98.30	1.58	20.43	27.86	50.13
22	100.00	18.18	45.45	27.27	9.09	6325	91.71	10.10	51.95	21.19	16.76
***	***	***	***	***	***	470	98.12	0.85	15.32	27.23	56.60
N/A	N/A	N/A	N/A	N/A	N/A	565	98.09	0.00	6.19	16.46	77.35
80	100.00	3.75	30.00	35.00	31.25	19365	97.97	2.50	30.10	31.60	35.79
***	***	***	***	***	***	1698	97.92	2.41	29.15	32.63	35.81
85	100.00	1.18	14.12	22.35	62.35	32632	98.53	1.02	14.57	25.60	58.81
81	100.00	2.47	20.99	25.93	50.62	28271	97.97	1.92	21.87	27.14	49.07
87	100.00	2.30	22.99	31.03	43.68	26561	98.67	1.22	18.90	28.63	51.25
136	100.00	2.94	25.74	30.88	40.44	30036	97.90	2.28	27.85	31.64	38.23
***	***	***	***	***	***	1342	97.96	2.83	32.12	32.41	32.64
***	***	***	***	***	***	191	97.45	2.09	24.61	36.65	36.65
***	***	***	***	***	***	325	95.31	4.00	22.46	30.15	43.38
190	98.45	2.11	31.05	34.21	32.63	55880	98.21	0.76	22.71	36.24	40.28
26	92.86	15.38	61.54	11.54	11.54	6517	91.16	5.34	61.61	23.40	9.65
***	***	***	***	***	***	543	98.55	0.37	18.23	36.83	44.57
***	***	***	***	***	***	530	97.79	0.19	8.68	21.32	69.81
93	97.89	2.15	38.71	36.56	22.58	20126	98.01	1.22	33.25	39.42	26.12
***	***	***	***	***	***	1660	97.76	1.20	33.67	36.27	28.86
92	98.92	2.17	23.91	31.52	42.39	32930	98.35	0.48	16.04	34.52	48.96
104	98.11	1.92	37.50	27.88	32.69	28774	97.93	1.03	25.61	35.63	37.72
86	98.85	2.33	23.26	41.86	32.56	27106	98.50	0.48	19.64	36.89	43.00
147	98.00	2.72	34.69	36.05	26.53	30490	97.79	1.14	30.99	39.48	28.40
***	***	***	***	***	***	1205	98.45	1.49	40.33	34.77	23.40
***	***	***	***	***	***	174	97.21	1.15	37.36	39.66	21.84
***	***	***	***	***	***	274	95.80	0.73	22.99	36.86	39.42

\*\*\* = Less than 10 students tested

N/D = No Data Available

N/A = Not Applicable

N/R = Not Reported

## ALABAMA READING AND MATHEMATICS TEST

The Alabama Reading and Mathematics Test provides an assessment of students' mastery of the content contained in the Alabama Course of Study. The Reading and Mathematics Test was given in grades three through eight.

# STUDENT ACADEMIC PERFORMANCE

	READING											
	SYSTEM						STATE					
			Level 1	Level 2	Level 3	Level 4			Level 1	Level 2	Level 3	Level 4
	Number Tested	Percent Tested	Percent Not Meeting Standard	Percent Partially Meeting Standard	Percent Meeting Standard	Percent Exceeding Standard	Number Tested	Percent Tested	Percent Not Meeting Standard	Percent Partially Meeting Standard	Percent Meeting Standard	Percent Exceeding Standard
<b>Grade 6</b>												
All Students	164	98.80	1.22	16.46	28.66	53.66	56556	97.76	0.65	16.28	26.59	56.49
Special Education	19	95.00	5.26	52.63	26.32	15.79	6512	90.60	4.75	58.46	24.68	12.12
American Indian / Alaskan	***	***	***	***	***	***	510	98.46	0.20	12.16	20.98	66.67
Asian / Pacific Islander	***	***	***	***	***	***	507	95.66	0.99	8.68	16.57	73.77
Black	83	98.81	1.20	19.28	36.14	43.37	20745	97.28	0.93	25.09	35.31	38.67
Hispanic	***	***	***	***	***	***	1509	94.31	1.13	25.91	30.22	42.74
White	77	98.72	1.30	12.99	22.08	63.64	33218	98.24	0.45	10.52	21.23	67.80
Male	91	98.91	2.20	25.27	28.57	43.96	29042	97.41	0.95	20.77	27.69	50.59
Female	73	98.65	0.00	5.48	28.77	65.75	27514	98.13	0.32	11.53	25.43	62.72
Free / Reduced Meals	133	98.52	0.75	19.55	31.58	48.12	30362	97.21	0.99	23.44	33.23	42.34
Limited-English Proficient	N/A	N/A	N/A	N/A	N/A	N/A	907	89.45	2.09	38.70	33.19	26.02
Migrant	N/A	N/A	N/A	N/A	N/A	N/A	150	93.75	4.00	34.67	26.67	34.67
Displaced	***	***	***	***	***	***	590	95.78	1.69	17.97	28.98	51.36
<b>Grade 7</b>												
All Students	200	97.09	0.50	39.00	35.00	25.50	58550	97.17	1.18	24.47	33.64	40.70
Special Education	37	86.05	2.70	86.49	5.41	5.41	6963	89.73	7.41	67.79	19.40	5.40
American Indian / Alaskan	N/A	N/A	N/A	N/A	N/A	N/A	549	98.74	0.73	18.21	31.33	49.73
Asian / Pacific Islander	N/A	N/A	N/A	N/A	N/A	N/A	452	95.97	0.00	14.38	25.22	60.40
Black	97	95.10	1.03	46.39	34.02	18.56	21745	96.44	1.90	35.64	38.70	23.76
Hispanic	***	***	***	***	***	***	1439	93.26	2.57	37.60	34.61	25.23
White	102	99.03	0.00	31.37	36.27	32.35	34287	97.80	0.69	17.09	30.54	51.68
Male	112	94.92	0.89	45.54	33.93	19.64	30268	96.61	1.82	30.74	33.03	34.42
Female	88	100.00	0.00	30.68	36.36	32.95	28282	97.78	0.50	17.77	34.30	47.42
Free / Reduced Meals	153	96.23	0.65	41.18	33.33	24.84	31399	96.31	1.79	33.99	37.75	26.47
Limited-English Proficient	N/A	N/A	N/A	N/A	N/A	N/A	881	89.71	3.52	52.21	31.67	12.60
Migrant	N/A	N/A	N/A	N/A	N/A	N/A	159	92.98	5.66	42.14	31.45	20.75
Displaced	***	***	***	***	***	***	488	94.57	1.43	25.00	36.07	37.50
<b>Grade 8</b>												
All Students	162	98.18	1.23	38.27	44.44	16.05	56822	97.00	1.10	27.15	38.69	33.06
Special Education	23	88.46	8.70	73.91	17.39	0.00	6740	89.60	7.37	69.84	19.35	3.44
American Indian / Alaskan	N/A	N/A	N/A	N/A	N/A	N/A	524	99.05	0.95	21.95	39.31	37.79
Asian / Pacific Islander	***	***	***	***	***	***	563	97.91	0.36	13.68	30.20	55.77
Black	84	98.82	1.19	39.29	46.43	13.10	20660	95.87	1.59	40.47	42.15	15.78
Hispanic	***	***	***	***	***	***	1318	93.21	1.97	36.49	36.65	24.89
White	75	97.40	1.33	37.33	42.67	18.67	33705	97.82	0.78	18.95	36.77	43.50
Male	92	98.92	2.17	41.30	44.57	11.96	29064	96.61	1.70	33.35	36.90	28.05
Female	70	97.22	0.00	34.29	44.29	21.43	27758	97.41	0.48	20.67	40.55	38.30
Free / Reduced Meals	133	97.79	0.75	40.60	41.35	17.29	29179	95.93	1.72	38.15	41.31	18.82
Limited-English Proficient	N/A	N/A	N/A	N/A	N/A	N/A	724	88.51	3.87	54.70	31.91	9.53
Migrant	N/A	N/A	N/A	N/A	N/A	N/A	144	94.12	4.17	46.53	30.56	18.75
Displaced	***	***	***	***	***	***	520	94.89	2.31	32.50	39.04	26.15

\*\*\* = Less than 10 students tested

N/D = No Data Available

N/A = Not Applicable

N/R = Not Reported

# STUDENT ACADEMIC PERFORMANCE

## MATHEMATICS

SYSTEM						STATE					
Number Tested	Percent Tested	Level 1		Level 3		Number Tested	Percent Tested	Level 1		Level 3	
		Percent Not Meeting Standard	Percent Partially Meeting Standard	Percent Meeting Standard	Percent Exceeding Standard			Percent Not Meeting Standard	Percent Partially Meeting Standard	Percent Meeting Standard	Percent Exceeding Standard
164	98.80	0.61	32.32	47.56	19.51	56566	97.78	0.07	25.19	41.99	32.75
19	95.00	0.00	73.68	26.32	0.00	6491	90.30	0.45	70.19	24.19	5.18
***	***	***	***	***	***	507	97.88	0.39	13.81	39.05	46.75
***	***	***	***	***	***	518	97.74	0.00	7.14	25.87	66.99
83	98.81	0.00	40.96	51.81	7.23	20716	97.15	0.11	39.44	43.93	16.52
***	***	***	***	***	***	1558	97.38	0.06	33.31	44.09	22.53
77	98.72	1.30	24.68	41.56	32.47	33198	98.18	0.04	16.38	40.97	42.61
91	98.91	1.10	35.16	46.15	17.58	29046	97.42	0.10	27.25	40.23	32.42
73	98.65	0.00	28.77	49.32	21.92	27520	98.15	0.03	23.01	43.86	33.10
133	98.52	0.00	36.84	48.12	15.04	30370	97.23	0.10	35.37	44.96	19.57
N/A	N/A	N/A	N/A	N/A	N/A	986	97.24	0.20	42.49	40.67	16.63
N/A	N/A	N/A	N/A	N/A	N/A	154	96.25	0.00	39.61	41.56	18.83
***	***	***	***	***	***	586	95.13	0.17	24.06	46.93	28.84
200	97.09	0.00	58.00	34.50	7.50	58442	96.99	0.08	40.77	36.56	22.58
37	86.05	0.00	94.59	2.70	2.70	6915	89.11	0.55	85.37	12.25	1.84
N/A	N/A	N/A	N/A	N/A	N/A	546	98.20	0.00	32.42	42.12	25.46
N/A	N/A	N/A	N/A	N/A	N/A	457	97.03	0.00	13.35	27.57	59.08
97	95.10	0.00	71.13	20.62	8.25	21646	96.00	0.15	55.88	32.99	10.98
***	***	***	***	***	***	1505	97.54	0.00	52.09	33.95	13.95
102	99.03	0.00	45.10	48.04	6.86	34210	97.58	0.05	31.23	38.96	29.76
112	94.92	0.00	63.39	28.57	8.04	30203	96.40	0.10	45.34	33.98	20.58
88	100.00	0.00	51.14	42.05	6.82	28239	97.63	0.07	35.89	39.33	24.72
153	96.23	0.00	58.17	33.99	7.84	31321	96.07	0.12	53.49	34.71	11.68
N/A	N/A	N/A	N/A	N/A	N/A	956	97.35	0.10	62.13	26.99	10.77
N/A	N/A	N/A	N/A	N/A	N/A	164	95.91	0.00	62.80	26.22	10.98
***	***	***	***	***	***	489	94.77	0.00	42.33	40.49	17.18
162	98.18	0.00	33.33	61.73	4.94	56792	96.95	0.01	32.35	49.07	18.57
23	88.46	0.00	52.17	47.83	0.00	6715	89.27	0.06	77.14	21.30	1.50
N/A	N/A	N/A	N/A	N/A	N/A	521	98.49	0.00	24.57	54.32	21.11
***	***	***	***	***	***	568	98.78	0.00	10.56	36.09	53.35
84	98.82	0.00	30.95	65.48	3.57	20609	95.64	0.01	47.78	44.91	7.30
***	***	***	***	***	***	1375	97.24	0.00	40.65	49.67	9.67
75	97.40	0.00	34.67	58.67	6.67	33666	97.70	0.01	23.06	51.72	25.21
92	98.92	0.00	41.30	54.35	4.35	29041	96.54	0.01	35.99	46.04	17.96
70	97.22	0.00	22.86	71.43	5.71	27751	97.39	0.01	28.55	52.24	19.21
133	97.79	0.00	32.33	62.41	5.26	29177	95.93	0.01	44.25	47.60	8.15
N/A	N/A	N/A	N/A	N/A	N/A	795	97.19	0.00	52.08	39.25	8.68
N/A	N/A	N/A	N/A	N/A	N/A	149	97.39	0.00	47.65	40.27	12.08
***	***	***	***	***	***	520	94.89	0.00	31.35	55.58	13.08

## ALABAMA READING AND MATHEMATICS TEST

The Alabama Reading and Mathematics Test provides an assessment of students' mastery of the content contained in the Alabama Course of Study. The Reading and Mathematics Test was given in grades three through eight.

\*\*\* = Less than 10 students tested

N/D = No Data Available

N/A = Not Applicable

N/R = Not Reported

# STUDENT ACADEMIC PERFORMANCE

## Alabama High School Graduation Exam 2006

Students must pass the graduation exam to earn an Alabama High School diploma. This table shows the percent of 11th grade students that passed the Reading subtest and the Mathematics subtest of the exam. "Percent Passed Advanced" are those students who passed and exceeded academic content standards.

Grade 11	SYSTEM								STATE							
	Reading				Mathematics				Reading				Mathematics			
	Number Tested	Percent Tested	Percent Passed	Percent Passed Advanced	Number Tested	Percent Tested	Percent Passed	Percent Passed Advanced	Number Tested	Percent Tested	Percent Passed	Percent Passed Advanced	Number Tested	Percent Tested	Percent Passed	Percent Passed Advanced
All Students	134	97.81	82.09	8.96	134	97.81	63.43	26.87	45239	96.55	64.90	20.73	45247	96.57	65.22	18.39
Special Education	13	92.86	30.77	0.00	13	92.86	38.46	0.00	4026	85.26	31.57	1.52	4032	85.39	29.22	1.98
American Indian / Alaskan	N/A	N/A	N/A	N/A	N/A	N/A	N/A	N/A	383	96.96	66.58	21.15	385	97.47	65.71	19.22
Asian / Pacific Islander	***	***	***	***	***	***	***	***	449	91.82	54.79	30.73	445	91.00	44.94	48.76
Black	76	100.00	81.58	3.95	76	100.00	67.11	19.74	15426	95.07	67.44	7.93	15473	95.36	65.97	8.03
Hispanic	***	***	***	***	***	***	***	***	757	95.46	58.78	12.95	761	95.96	66.36	15.64
White	56	94.92	82.14	16.07	56	94.92	58.93	35.71	28189	97.50	63.82	27.77	28149	97.36	65.08	23.67
Male	59	100.00	86.44	8.47	59	100.00	67.80	25.42	22146	96.03	64.77	18.53	22137	95.99	63.04	18.39
Female	75	96.15	78.67	9.33	75	96.15	60.00	28.00	23093	97.05	65.02	22.85	23110	97.13	67.30	18.40
Free / Reduced Meals	93	96.88	81.72	6.45	93	96.88	66.67	21.51	17000	95.20	66.75	9.18	17029	95.36	65.95	8.73
Limited-English Proficient	N/A	N/A	N/A	N/A	N/A	N/A	N/A	N/A	302	92.64	40.73	2.32	300	92.02	59.67	14.67
Migrant	N/A	N/A	N/A	N/A	N/A	98.68	N/A	N/A	75	98.68	50.67	14.67	75	98.68	68.00	17.33
Displaced	N/A	N/A	N/A	N/A	N/A	N/A	N/A	N/A	N/A	N/A	N/A	N/A	N/A	N/A	N/A	N/A

\*\*\* = Less than 10 students tested

N/D = No Data Available

N/A = Not Applicable

N/R = Not Reported

## Projected 4-year Dropout Rate

This table shows the percent of students in the 9th grade in 2004-2005 who are projected to leave school prior to graduation in 2008. The grade compares this school system to the state average. *Note: This is not an annual dropout rate.*

SYSTEM		STATE	
Projected Percent	Grade	Projected Percent	Grade
17.22	C	11.18	B-

## ACT Test 2006

Most students planning to attend college take a college entrance exam. One of the best known is the ACT. This table shows the average of the highest ACT score for the entire senior class in this school and how it compares to the school system and state average. The Southeastern average is 20.2. The national average is 21.1

Grade 12	SYSTEM			STATE		
	Number Tested	Average Score	Grade	Number Tested	Average Score	Grade
	51	17.50	D-	26723	20.20	C

# STUDENT ACADEMIC PERFORMANCE

## Alabama Alternate Assessment 2006

The Alabama Alternate Assessment is designed for students with disabilities whose Individualized Education Program [IEP] team determines that the student will not participate in the regular state assessments.

READING											
SYSTEM						STATE					
		Level 1	Level 2	Level 3	Level 4			Level 1	Level 2	Level 3	Level 4
Number Tested	Percent Tested	Percent Not Meeting Standard	Percent Partially Meeting Standard	Percent Meeting Standard	Percent Exceeding Standard	Number Tested	Percent Tested	Percent Not Meeting Standard	Percent Partially Meeting Standard	Percent Meeting Standard	Percent Exceeding Standard
All Students	15	0.70	0.00	0.00	100.00	5277	0.73	6.77	9.68	40.34	43.21

MATHEMATICS											
SYSTEM						STATE					
		Level 1	Level 2	Level 3	Level 4			Level 1	Level 2	Level 3	Level 4
Number Tested	Percent Tested	Percent Not Meeting Standard	Percent Partially Meeting Standard	Percent Meeting Standard	Percent Exceeding Standard	Number Tested	Percent Tested	Percent Not Meeting Standard	Percent Partially Meeting Standard	Percent Meeting Standard	Percent Exceeding Standard
All Students	15	0.70	0.00	0.00	100.00	5328	0.73	7.00	10.94	41.61	40.45

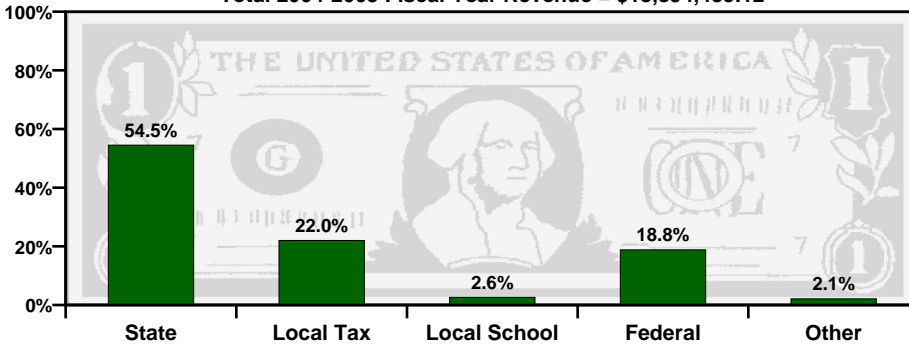
## Alabama Direct Assessment of Writing 2006

Alabama students in grades five, seven, and ten are given the Alabama Direct Assessment of Writing each year to measure their writing skills. This table shows how well students met the performance standard of this test.

SYSTEM						STATE						
		Level 1	Level 2	Level 3	Level 4			Level 1	Level 2	Level 3	Level 4	
Number Tested	Percent Tested	Percent Not Meeting Standard	Percent Partially Meeting Standard	Percent Meeting Standard	Percent Exceeding Standard	Number Tested	Percent Tested	Percent Not Meeting Standard	Percent Partially Meeting Standard	Percent Meeting Standard	Percent Exceeding Standard	
Grade 5	185	95.85	6.49	34.05	51.89	7.57	54352	95.52	3.92	32.00	53.91	10.17
Grade 7	190	92.23	7.37	38.42	52.11	2.11	56711	94.12	6.40	33.59	50.80	9.21
Grade 10	154	95.06	4.55	35.06	52.60	7.79	48725	89.22	3.35	27.59	50.29	18.77

# TAXPAYERS' REPORT - FISCAL YEAR 2005

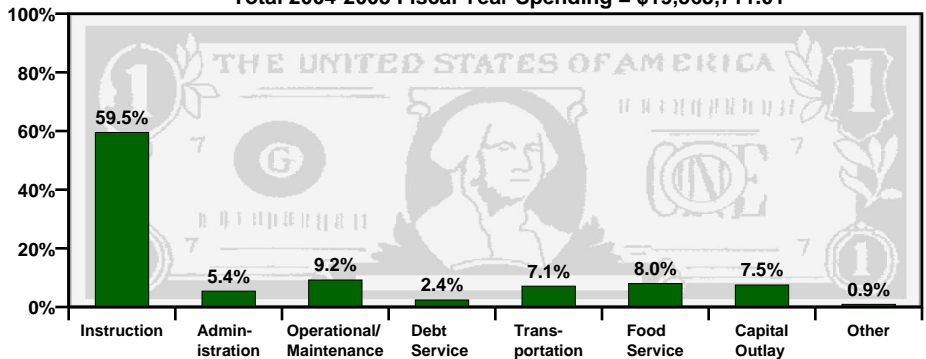
Total 2004-2005 Fiscal Year Revenue = \$18,894,459.12



## Sources of School System Revenues

Total 2004-2005 Fiscal Year Spending = \$19,565,711.01

## School System's Use of Funds



SOURCE of REVENUE	AMOUNT
Local School Revenue	\$499,921.36
Local Capital Projects Revenue	\$95,814.78
Other Local Revenue (includes local taxes)	\$4,059,100.98
<b>Total Local Revenue</b>	<b>\$4,654,837.12</b>

## Local Revenue Breakdown

This table provides a breakdown of local revenues for fiscal year 2005. The revenue from local school projects / activities and the capital projects fund have been itemized to provide a more complete analysis of local fund sources.

## Mills Equivalent

This is the total amount of revenue collected locally for public school purposes, divided by the value of one regular system mill of ad valorem tax. The state average is 32.87 mills equivalent.

This System	Grade
38.19	B+

## Spending per Student

The table below shows the spending per student for this school system. The letter grade compares the system's per student spending to the state, southeast, and nation.

Year	Amount	State	Southeast	Nation
2003-2004	\$7,668.49	B+	B-	C-
2004-2005	\$8,034.91	A	B	C

A = Excellent

B = Good

C = Average

D = Poor

F = Fail