



# State Board of Education School Report Card for 2005-2006

## Windham Elementary School

### State Board of Education Members

Gov. Bob Riley, Board President  
Randy McKinney, President Pro Tem, District 1  
Betty Peters, District 2  
Stephanie Bell, District 3  
Dr. Ethel Hall, Vice President Emerita, District 4  
Ella Bell, District 5  
David F. Byers, Jr., District 6  
Sandra Ray, Vice President, District 7  
Dr. Mary Jane Caylor, District 8  
Joseph B. Morton, Superintendent of Education

### Principal

Mr. Christopher Mitten

### Superintendent

Mr. Andrew R Kelley

### School Board Members

Mr. Frank Mcclanahan  
Mr. James Horace  
Mrs. Angela Filmore  
Mrs. Rusia Richardson  
Mr. Richard McIn

Windham Elementary School  
626 N. Daleville Ave  
Daleville, AL 36322-2006  
(334) 598-4466

*Report cards are prepared by the Alabama Department of Education.  
For more information including a glossary of terms, grading scales, and  
detailed data, visit the SDE Web site Accountability Reporting System at:  
<http://www.alsde.edu/Accountability/preAccountability.asp>*

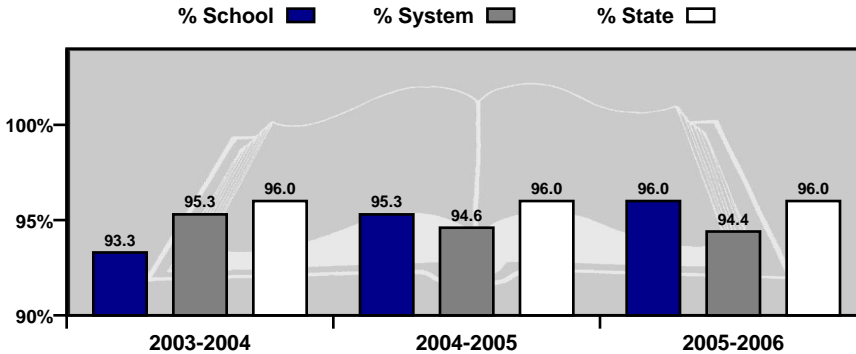


# GENERAL INFORMATION

## Average Daily Membership

This is the average number of students on attendance rolls during the first 20 days of school after Labor Day.

Year	ADM
2005-2006	513.5
2004-2005	474.7
2003-2004	496.4

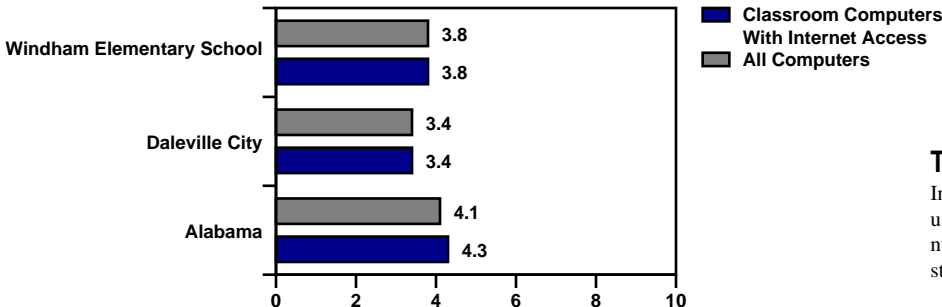
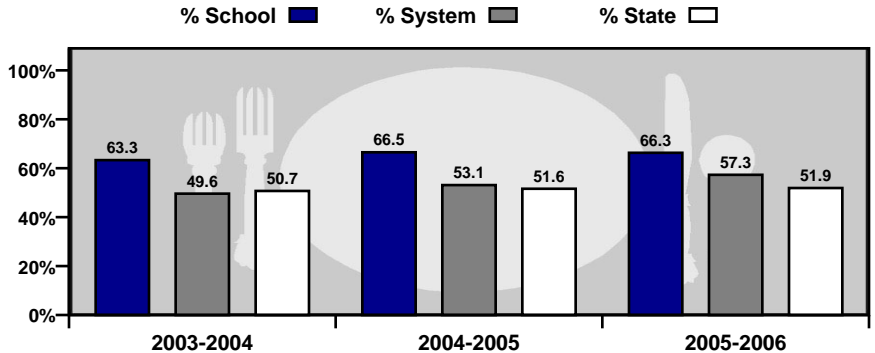


## Average Daily Attendance

This is the percent of students that attend school each day.

## Students Eligible for Free or Reduced Price Meals

This is the percent of students that applied for and were approved as reported on the Fall Attendance Report. It is an indicator of poverty.



## Technology

Internet access and computer use in schools. A lower number indicates greater student access to technology.

# GENERAL INFORMATION

## Teacher Qualifications

This table shows the percentage of teachers holding each level of certification as issued by the Alabama Department of Education for this school in 2005–2006.

6-Year (Class AA) through Doctorate	Master's Degree (Class A)	Bachelor's Degree (Class B)	Alternative	Emergency
12.2%	39.0%	46.3%	2.4%	0.0%

Percentage of All Elementary and Secondary Teachers with Alternative or Emergency Certification	2.4%
---	------

## Staffing

Each school is staffed with full- and part-time faculty and staff. In 2005-2006, this school employed the following professionals.

	School	System	State
Teachers	35.6	98.6	47,319
Counselors	1.0	3.5	1,814
Librarians	1.0	3.0	1,404
Administrators	1.0	4.5	2,601
Nurses	1.0	1.0	765
Instruction Assistants	6.0	9.0	6,774
Other (certified)	0.4	4.5	1,778
Support Staff	4.0	52.0	29,083

## Safety & Discipline

The following table shows the types of discipline problems that have occurred at this school and what actions were taken in 2005-2006.

Type of Incident	Number of Incidents Reported	Action Taken		
		Suspension	Expulsion	Sent to Alternative School
Assault	0	0	0	0
Bomb Threat	0	0	0	0
Drug Related	0	0	0	0
Weapon Related	0	0	0	0

As required by federal law, students must be allowed to transfer to another school if their school is identified as persistently dangerous.

Is this a transfer option school? **NO**

# GENERAL INFORMATION

## Highly Qualified Teachers

This is the percent of teachers that are teaching and the percent of classes taught in a core subject for which the teacher is highly qualified by the State of Alabama as required by the federal legislation known as: No Child Left Behind.

CLASSES	Total Classes		Current Percentage Taught By Highly Qualified Teachers		Current Percentage Not Taught By Highly Qualified Teachers	
	2004-2005	2005-2006	2004-2005	2005-2006	2004-2005	2005-2006
SCHOOL	2004-2005	2005-2006	2004-2005	2005-2006	2004-2005	2005-2006
Elementary Classes	129	117	95.4	100	4.6	0.0
Secondary Classes	No Data	No Data	No Data	No Data	No Data	No Data
TOTAL CLASSES	129	114	95.4	100	4.6	0.0
SYSTEM	2004-2005	2005-2006	2004-2005	2005-2006	2004-2005	2005-2006
Elementary Classes	182	163	91.2	100	8.8	0.0
Secondary Classes	165	101	76.4	86.1	23.6	13.9
TOTAL CLASSES	347	261	84.2	94.6	15.8	5.4
STATE	2004-2005	2005-2006	2004-2005	2005-2006	2004-2005	2005-2006
Elementary Classes	85,513	97,672	84.8	94.9	15.2	5.1
Secondary Classes	67,979	60,824	77.8	84.2	22.2	15.8
TOTAL CLASSES	153,492	158,496	81.8	90.8	18.2	9.2

TEACHERS	Total Teachers		Current Percentage Highly Qualified Teachers		Current Percentage Not Highly Qualified Teachers	
	2004-2005	2005-2006	2004-2005	2005-2006	2004-2005	2005-2006
SCHOOL	2004-2005	2005-2006	2004-2005	2005-2006	2004-2005	2005-2006
Elementary Teachers	32	29	96.9	100	3.1	0.0
Secondary Teachers	No Data	No Data	No Data	No Data	No Data	No Data
TOTAL TEACHERS	32	29	96.9	100	3.1	0.0
SYSTEM	2004-2005	2005-2006	2004-2005	2005-2006	2004-2005	2005-2006
Elementary Teachers	52	38	90.4	100	9.6	0.0
Secondary Teachers	34	30	73.5	86.7	26.5	13.3
TOTAL TEACHERS	86	68	83.7	94.1	16.3	5.9
STATE	2004-2005	2005-2006	2004-2005	2005-2006	2004-2005	2005-2006
Elementary Teachers	34,303	24,219	84.8	93.4	15.2	6.6
Secondary Teachers	15,057	15,533	70.5	80.6	29.5	19.4
TOTAL TEACHERS	49,360	39,752	80.4	88.4	19.6	11.6

High Quality Professional Development							
Total Surveyed		Received High Quality Professional Development		Did Not Receive High Quality Professional Development		PCT With Professional Development	
2004-05	2005-06	2004-05	2005-06	2004-05	2005-06	2004-05	2005-06
N/D	27	N/D	27	N/D	0	N/D	100.00

Instructional Paraprofessionals in Title I-Funded Schools							
Total Instructional Paraprofessionals		Total Qualified		Total Not Qualified		PCT Qualified	
2004-05	2005-06	2004-05	2005-06	2004-05	2005-06	2004-05	2005-06
5	5	5	5	0	0	100.00	100.00

## Adequate Yearly Progress Status for 2006-2007 Based on School Year 2005-2006 Data

State Accountability in Alabama is based on the federal law known as the “No Child Left Behind” Act (NCLB) of 2001. NCLB uses the term Adequate Yearly Progress (AYP) to describe whether a school or system has met its annual accountability goals.

### COMPONENTS OF AYP

1. Annual Goals for Reading and Mathematics
  - Percentage of students scoring proficient or higher
2. Participation Rate
  - Percentage of students participating in assessments
3. Indicators Affecting Academic Proficiency
  - Attendance
  - Graduation Rate (or improvement on the Dropout Rate)

### ASSESSMENTS USED IN DETERMINING AYP

- Alabama Reading and Mathematics Test (ARMT)
  - Reading: Grades 3–8
  - Mathematics: Grades 3–8
- Alabama High School Graduation Exam (AHSGE)
  - Reading: Grade 11
  - Mathematics: Grade 11
- Alabama Alternate Assessment (AAA)
  - Reading: Grades 3–8 and 11
  - Mathematics: Grades 3–8 and 11

For more detail on the Alabama Accountability System, please reference the Accountability Interpretive Guide which can be found on the SDE Web site:

<http://www.alsde.edu/Accountability/preAccountability.asp>

Select the Accountability Reporting option on the home page. Then request the School Year: 2005-2006 Report: 2006 Interpretive Guide for State Accountability

# STATE ACCOUNTABILITY

## Adequate Yearly Progress Status for 2006-2007

Based on School Year 2005-2006 Data

2006-2007 AYP Status: Made AYP

2006-2007 School Improvement Status: School Improvement - Year 1 (Delay)

*This School met 17 AYP Goals out of 17 (100.00%)*

### READING

2006-2007 AYP Status: Made AYP

Reading School Improvement Status: School Improvement - Year 1 (Delay)

Student Group	Percent Participation Goal = 95.00%	Met Participation Goal	Proficiency Index Goal = 0.00	Met Proficiency Goal*
All Students	99	Yes	17.88	Yes
Special Education	100	NA	-.50	NA
American Indian/Alaskan	100	NA	~	NA
Asian/Pacific Islander	100	NA	~	NA
Black	100	Yes	13.07	Yes
Hispanic	100	NA	12.00	NA
White	98	Yes	22.12	Yes
Limited-English Proficient	100	NA	~	NA
Free/Reduced Meals	99	Yes	15.12	Yes
Displaced	100	NA	No Data	No Data

### MATHEMATICS

2006-2007 AYP Status: Made AYP

Mathematics School Improvement Status: School Improvement - Year 1 (Delay)

Student Group	Percent Participation Goal = 95.00%	Met Participation Goal	Proficiency Index Goal = 0.00	Met Proficiency Goal*
All Students	99	Yes	25.34	Yes
Special Education	100	NA	5.80	NA
American Indian/Alaskan	100	NA	~	NA
Asian/Pacific Islander	100	NA	~	NA
Black	100	Yes	19.26	Yes
Hispanic	100	NA	24.20	NA
White	98	Yes	29.29	Yes
Limited-English Proficient	100	NA	~	NA
Free/Reduced Meals	99	Yes	22.19	Yes
Displaced	100	NA	No Data	No Data

#### Additional Academic Indicators

Student Group	Attendance Rate Goal = 95.00%	Attendance Rate Previous Year	Met Attendance AYP*	Graduation Rate Goal = 90.00%	Graduation Rate Previous Year	Met Graduation Rate AYP**
All Students	96.03	N/A	Yes	N/A	N/A	N/A

~ Not reported, less than 10 students (protects confidentiality).  
NA = Not in AYP, less than 40 students (ensures reliability).

\* AYP is met if the goal is met or the goal is within the confidence interval (ensures reliability).  
\*\* AYP is met if the goal is met or there is improvement from the previous year.

# STUDENT ACADEMIC PERFORMANCE

	READING											
	SCHOOL						SYSTEM					
			Level 1	Level 2	Level 3	Level 4			Level 1	Level 2	Level 3	Level 4
	Number Tested	Percent Tested	Percent Not Meeting Standard	Percent Partially Meeting Standard	Percent Meeting Standard	Percent Exceeding Standard	Number Tested	Percent Tested	Percent Not Meeting Standard	Percent Partially Meeting Standard	Percent Meeting Standard	Percent Exceeding Standard
<b>Grade 3</b>												
All Students	98	93.33	2.04	15.31	38.78	43.88	98	93.33	2.04	15.31	38.78	43.88
Special Education	14	93.33	7.14	35.71	35.71	21.43	14	93.33	7.14	35.71	35.71	21.43
American Indian / Alaskan	***	***	***	***	***	***	***	***	***	***	***	***
Asian / Pacific Islander	***	***	***	***	***	***	***	***	***	***	***	***
Black	33	94.29	3.03	24.24	42.42	30.30	33	94.29	3.03	24.24	42.42	30.30
Hispanic	***	***	***	***	***	***	***	***	***	***	***	***
White	59	93.65	1.69	8.47	38.98	50.85	59	93.65	1.69	8.47	38.98	50.85
Male	51	92.73	3.92	15.69	41.18	39.22	51	92.73	3.92	15.69	41.18	39.22
Female	47	94.00	0.00	14.89	36.17	48.94	47	94.00	0.00	14.89	36.17	48.94
Free / Reduced Meals	56	94.92	1.79	17.86	48.21	32.14	56	94.92	1.79	17.86	48.21	32.14
Limited-English Proficient	***	***	***	***	***	***	***	***	***	***	***	***
Migrant	N/A	N/A	N/A	N/A	N/A	N/A	N/A	N/A	N/A	N/A	N/A	N/A
Displaced	***	***	***	***	***	***	***	***	***	***	***	***
<b>Grade 4</b>												
All Students	89	98.89	1.12	14.61	31.46	52.81	89	98.89	1.12	14.61	31.46	52.81
Special Education	***	***	***	***	***	***	***	***	***	***	***	***
American Indian / Alaskan	***	***	***	***	***	***	***	***	***	***	***	***
Asian / Pacific Islander	***	***	***	***	***	***	***	***	***	***	***	***
Black	35	97.22	2.86	22.86	34.29	40.00	35	97.22	2.86	22.86	34.29	40.00
Hispanic	***	***	***	***	***	***	***	***	***	***	***	***
White	42	100.00	0.00	7.14	21.43	71.43	42	100.00	0.00	7.14	21.43	71.43
Male	47	97.92	0.00	23.40	25.53	51.06	47	97.92	0.00	23.40	25.53	51.06
Female	42	100.00	2.38	4.76	38.10	54.76	42	100.00	2.38	4.76	38.10	54.76
Free / Reduced Meals	50	98.04	2.00	20.00	36.00	42.00	50	98.04	2.00	20.00	36.00	42.00
Limited-English Proficient	***	***	***	***	***	***	***	***	***	***	***	***
Migrant	N/A	N/A	N/A	N/A	N/A	N/A	N/A	N/A	N/A	N/A	N/A	N/A
Displaced	***	***	***	***	***	***	***	***	***	***	***	***
<b>Grade 5</b>												
All Students	N/A	N/A	N/A	N/A	N/A	N/A	99	100.00	3.03	19.19	19.19	58.59
Special Education	N/A	N/A	N/A	N/A	N/A	N/A	10	100.00	10.00	40.00	20.00	30.00
American Indian / Alaskan	N/A	N/A	N/A	N/A	N/A	N/A	***	***	***	***	***	***
Asian / Pacific Islander	N/A	N/A	N/A	N/A	N/A	N/A	N/A	N/A	N/A	N/A	N/A	N/A
Black	N/A	N/A	N/A	N/A	N/A	N/A	39	100.00	5.13	28.21	23.08	43.59
Hispanic	N/A	N/A	N/A	N/A	N/A	N/A	***	***	***	***	***	***
White	N/A	N/A	N/A	N/A	N/A	N/A	51	100.00	0.00	13.73	13.73	72.55
Male	N/A	N/A	N/A	N/A	N/A	N/A	55	100.00	3.64	27.27	10.91	58.18
Female	N/A	N/A	N/A	N/A	N/A	N/A	44	100.00	2.27	9.09	29.55	59.09
Free / Reduced Meals	N/A	N/A	N/A	N/A	N/A	N/A	63	100.00	3.17	22.22	20.63	53.97
Limited-English Proficient	N/A	N/A	N/A	N/A	N/A	N/A	***	***	***	***	***	***
Migrant	N/A	N/A	N/A	N/A	N/A	N/A	N/A	N/A	N/A	N/A	N/A	N/A
Displaced	N/A	N/A	N/A	N/A	N/A	N/A	***	***	***	***	***	***

\*\*\* = Less than 10 students tested

N/D = No Data Available

N/A = Not Applicable

N/R = Not Reported



# STUDENT ACADEMIC PERFORMANCE

## MATHEMATICS

SCHOOL						SYSTEM					
Number Tested	Percent Tested	Level 1 Percent Not Meeting Standard	Level 2 Percent Partially Meeting Standard	Level 3 Percent Meeting Standard	Level 4 Percent Exceeding Standard	Number Tested	Percent Tested	Level 1 Percent Not Meeting Standard	Level 2 Percent Partially Meeting Standard	Level 3 Percent Meeting Standard	Level 4 Percent Exceeding Standard
99	94.29	3.03	15.15	35.35	46.46	99	94.29	3.03	15.15	35.35	46.46
14	93.33	14.29	35.71	14.29	35.71	14	93.33	14.29	35.71	14.29	35.71
***	***	***	***	***	***	***	***	***	***	***	***
***	***	***	***	***	***	***	***	***	***	***	***
33	94.29	3.03	24.24	39.39	33.33	33	94.29	3.03	24.24	39.39	33.33
***	***	***	***	***	***	***	***	***	***	***	***
59	93.65	3.39	10.17	28.81	57.63	59	93.65	3.39	10.17	28.81	57.63
51	92.73	3.92	11.76	41.18	43.14	51	92.73	3.92	11.76	41.18	43.14
48	96.00	2.08	18.75	29.17	50.00	48	96.00	2.08	18.75	29.17	50.00
56	94.92	3.57	17.86	35.71	42.86	56	94.92	3.57	17.86	35.71	42.86
***	***	***	***	***	***	***	***	***	***	***	***
N/A	N/A	N/A	N/A	N/A	N/A	N/A	N/A	N/A	N/A	N/A	N/A
***	***	***	***	***	***	***	***	N/A	***	***	***
89	98.89	1.12	15.73	31.46	51.69	89	98.89	1.12	15.73	31.46	51.69
***	***	***	***	***	***	***	***	***	***	***	***
***	***	***	***	***	***	***	***	***	***	***	***
***	***	***	***	***	***	***	***	***	***	***	***
35	97.22	2.86	28.57	31.43	37.14	35	97.22	2.86	28.57	31.43	37.14
***	***	***	***	***	***	***	***	***	***	***	***
42	100.00	0.00	7.14	26.19	66.67	42	100.00	0.00	7.14	26.19	66.67
47	97.92	0.00	23.40	21.28	55.32	47	97.92	0.00	23.40	21.28	55.32
42	100.00	2.38	7.14	42.86	47.62	42	100.00	2.38	7.14	42.86	47.62
50	98.04	2.00	22.00	32.00	44.00	50	98.04	2.00	22.00	32.00	44.00
***	***	***	***	***	***	***	***	***	***	***	***
N/A	N/A	N/A	N/A	N/A	N/A	N/A	N/A	N/A	N/A	N/A	N/A
***	***	***	***	***	***	***	***	***	***	***	***
N/A	N/A	N/A	N/A	N/A	N/A	99	100.00	1.01	37.37	29.29	32.32
N/A	N/A	N/A	N/A	N/A	N/A	10	100.00	0.00	80.00	10.00	10.00
N/A	N/A	N/A	N/A	N/A	N/A	***	***	***	***	***	***
N/A	N/A	N/A	N/A	N/A	N/A	N/A	N/A	N/A	N/A	N/A	N/A
N/A	N/A	N/A	N/A	N/A	N/A	39	100.00	2.56	51.28	20.51	25.64
N/A	N/A	N/A	N/A	N/A	N/A	***	***	***	***	***	***
N/A	N/A	N/A	N/A	N/A	N/A	51	100.00	0.00	25.49	39.22	35.29
N/A	N/A	N/A	N/A	N/A	N/A	55	100.00	1.82	45.45	20.00	32.73
N/A	N/A	N/A	N/A	N/A	N/A	44	100.00	0.00	27.27	40.91	31.82
N/A	N/A	N/A	N/A	N/A	N/A	63	100.00	0.00	44.44	30.16	25.40
N/A	N/A	N/A	N/A	N/A	N/A	***	***	***	***	***	***
N/A	N/A	N/A	N/A	N/A	N/A	N/A	N/A	N/A	N/A	N/A	N/A
N/A	N/A	N/A	N/A	N/A	N/A	***	***	***	***	***	***

## ALABAMA READING AND MATHEMATICS TEST

The Alabama Reading and Mathematics Test provides an assessment of students' mastery of the content contained in the Alabama Course of Study. The Reading and Mathematics Test was given in grades three through eight.

\*\*\* = Less than 10 students tested

N/D = No Data Available

N/A = Not Applicable

N/R = Not Reported

# STUDENT ACADEMIC PERFORMANCE

	READING											
	SCHOOL						SYSTEM					
			Level 1	Level 2	Level 3	Level 4			Level 1	Level 2	Level 3	Level 4
	Number Tested	Percent Tested	Percent Not Meeting Standard	Percent Partially Meeting Standard	Percent Meeting Standard	Percent Exceeding Standard	Number Tested	Percent Tested	Percent Not Meeting Standard	Percent Partially Meeting Standard	Percent Meeting Standard	Percent Exceeding Standard
<b>Grade 6</b>												
All Students	N/A	N/A	N/A	N/A	N/A	N/A	119	97.54	0.00	25.21	32.77	42.02
Special Education	N/A	N/A	N/A	N/A	N/A	N/A	14	87.50	0.00	71.43	14.29	14.29
American Indian / Alaskan	N/A	N/A	N/A	N/A	N/A	N/A	N/A	N/A	N/A	N/A	N/A	N/A
Asian / Pacific Islander	N/A	N/A	N/A	N/A	N/A	N/A	N/A	N/A	N/A	N/A	N/A	N/A
Black	N/A	N/A	N/A	N/A	N/A	N/A	57	98.28	0.00	28.07	31.58	40.35
Hispanic	N/A	N/A	N/A	N/A	N/A	N/A	***	***	***	***	***	***
White	N/A	N/A	N/A	N/A	N/A	N/A	53	96.36	0.00	20.75	35.85	43.40
Male	N/A	N/A	N/A	N/A	N/A	N/A	63	100.00	0.00	33.33	33.33	33.33
Female	N/A	N/A	N/A	N/A	N/A	N/A	56	94.92	0.00	16.07	32.14	51.79
Free / Reduced Meals	N/A	N/A	N/A	N/A	N/A	N/A	74	97.37	0.00	31.08	36.49	32.43
Limited-English Proficient	N/A	N/A	N/A	N/A	N/A	N/A	***	***	***	***	***	***
Migrant	N/A	N/A	N/A	N/A	N/A	N/A	N/A	N/A	N/A	N/A	N/A	N/A
Displaced	N/A	N/A	N/A	N/A	N/A	N/A	***	***	***	***	***	***
<b>Grade 7</b>												
All Students	N/A	N/A	N/A	N/A	N/A	N/A	113	98.26	0.88	30.97	36.28	31.86
Special Education	N/A	N/A	N/A	N/A	N/A	N/A	16	88.89	6.25	68.75	25.00	0.00
American Indian / Alaskan	N/A	N/A	N/A	N/A	N/A	N/A	N/A	N/A	N/A	N/A	N/A	N/A
Asian / Pacific Islander	N/A	N/A	N/A	N/A	N/A	N/A	***	***	***	***	***	***
Black	N/A	N/A	N/A	N/A	N/A	N/A	49	98.00	0.00	34.69	34.69	30.61
Hispanic	N/A	N/A	N/A	N/A	N/A	N/A	***	***	***	***	***	***
White	N/A	N/A	N/A	N/A	N/A	N/A	56	98.25	1.79	26.79	37.50	33.93
Male	N/A	N/A	N/A	N/A	N/A	N/A	65	98.48	1.54	44.62	29.23	24.62
Female	N/A	N/A	N/A	N/A	N/A	N/A	48	97.96	0.00	12.50	45.83	41.67
Free / Reduced Meals	N/A	N/A	N/A	N/A	N/A	N/A	66	97.06	0.00	31.82	36.36	31.82
Limited-English Proficient	N/A	N/A	N/A	N/A	N/A	N/A	N/A	N/A	N/A	N/A	N/A	N/A
Migrant	N/A	N/A	N/A	N/A	N/A	N/A	N/A	N/A	N/A	N/A	N/A	N/A
Displaced	N/A	N/A	N/A	N/A	N/A	N/A	***	***	***	***	***	***
<b>Grade 8</b>												
All Students	N/A	N/A	N/A	N/A	N/A	N/A	96	96.00	1.04	33.33	39.58	26.04
Special Education	N/A	N/A	N/A	N/A	N/A	N/A	***	***	***	***	***	***
American Indian / Alaskan	N/A	N/A	N/A	N/A	N/A	N/A	N/A	N/A	N/A	N/A	N/A	N/A
Asian / Pacific Islander	N/A	N/A	N/A	N/A	N/A	N/A	***	***	***	***	***	***
Black	N/A	N/A	N/A	N/A	N/A	N/A	43	97.73	0.00	46.51	41.86	11.63
Hispanic	N/A	N/A	N/A	N/A	N/A	N/A	***	***	***	***	***	***
White	N/A	N/A	N/A	N/A	N/A	N/A	45	93.75	2.22	24.44	33.33	40.00
Male	N/A	N/A	N/A	N/A	N/A	N/A	59	96.72	1.69	38.98	35.59	23.73
Female	N/A	N/A	N/A	N/A	N/A	N/A	37	94.87	0.00	24.32	45.95	29.73
Free / Reduced Meals	N/A	N/A	N/A	N/A	N/A	N/A	52	96.30	0.00	46.15	40.38	13.46
Limited-English Proficient	N/A	N/A	N/A	N/A	N/A	N/A	N/A	N/A	N/A	N/A	N/A	N/A
Migrant	N/A	N/A	N/A	N/A	N/A	N/A	N/A	N/A	N/A	N/A	N/A	N/A
Displaced	N/A	N/A	N/A	N/A	N/A	N/A	***	***	***	***	***	***

\*\*\* = Less than 10 students tested

N/D = No Data Available

N/A = Not Applicable

N/R = Not Reported

# STUDENT ACADEMIC PERFORMANCE

## MATHEMATICS

SCHOOL						SYSTEM					
		Level 1	Level 2	Level 3	Level 4			Level 1	Level 2	Level 3	Level 4
Number Tested	Percent Tested	Percent Not Meeting Standard	Percent Partially Meeting Standard	Percent Meeting Standard	Percent Exceeding Standard	Number Tested	Percent Tested	Percent Not Meeting Standard	Percent Partially Meeting Standard	Percent Meeting Standard	Percent Exceeding Standard
N/A	N/A	N/A	N/A	N/A	N/A	118	96.72	0.85	45.76	37.29	16.10
N/A	N/A	N/A	N/A	N/A	N/A	14	87.50	0.00	85.71	14.29	0.00
N/A	N/A	N/A	N/A	N/A	N/A	N/A	N/A	N/A	N/A	N/A	N/A
N/A	N/A	N/A	N/A	N/A	N/A	N/A	N/A	N/A	N/A	N/A	N/A
N/A	N/A	N/A	N/A	N/A	N/A	57	98.28	0.00	59.65	35.09	5.26
N/A	N/A	N/A	N/A	N/A	N/A	***	***	***	***	***	***
N/A	N/A	N/A	N/A	N/A	N/A	53	96.36	1.89	30.19	39.62	28.30
N/A	N/A	N/A	N/A	N/A	N/A	63	100.00	1.59	49.21	30.16	19.05
N/A	N/A	N/A	N/A	N/A	N/A	55	93.22	0.00	41.82	45.45	12.73
N/A	N/A	N/A	N/A	N/A	N/A	74	97.37	1.35	55.41	32.43	10.81
N/A	N/A	N/A	N/A	N/A	N/A	***	***	***	***	***	***
N/A	N/A	N/A	N/A	N/A	N/A	N/A	N/A	N/A	N/A	N/A	N/A
N/A	N/A	N/A	N/A	N/A	N/A	***	***	***	***	***	***
N/A	N/A	N/A	N/A	N/A	N/A	112	97.39	0.00	46.43	43.75	9.82
N/A	N/A	N/A	N/A	N/A	N/A	16	88.89	0.00	93.75	6.25	0.00
N/A	N/A	N/A	N/A	N/A	N/A	N/A	N/A	N/A	N/A	N/A	N/A
N/A	N/A	N/A	N/A	N/A	N/A	***	***	***	***	***	***
N/A	N/A	N/A	N/A	N/A	N/A	49	98.00	0.00	57.14	40.82	2.04
N/A	N/A	N/A	N/A	N/A	N/A	***	***	***	***	***	***
N/A	N/A	N/A	N/A	N/A	N/A	55	96.49	0.00	38.18	45.45	16.36
N/A	N/A	N/A	N/A	N/A	N/A	64	96.97	0.00	54.69	37.50	7.81
N/A	N/A	N/A	N/A	N/A	N/A	48	97.96	0.00	35.42	52.08	12.50
N/A	N/A	N/A	N/A	N/A	N/A	65	95.59	0.00	47.69	46.15	6.15
N/A	N/A	N/A	N/A	N/A	N/A	N/A	N/A	N/A	N/A	N/A	N/A
N/A	N/A	N/A	N/A	N/A	N/A	N/A	N/A	N/A	N/A	N/A	N/A
N/A	N/A	N/A	N/A	N/A	N/A	***	***	***	***	***	***
N/A	N/A	N/A	N/A	N/A	N/A	96	96.00	0.00	35.42	47.92	16.67
N/A	N/A	N/A	N/A	N/A	N/A	***	***	***	***	***	***
N/A	N/A	N/A	N/A	N/A	N/A	N/A	N/A	N/A	N/A	N/A	N/A
N/A	N/A	N/A	N/A	N/A	N/A	***	***	***	***	***	***
N/A	N/A	N/A	N/A	N/A	N/A	43	97.73	0.00	55.81	39.53	4.65
N/A	N/A	N/A	N/A	N/A	N/A	***	***	***	***	***	***
N/A	N/A	N/A	N/A	N/A	N/A	45	93.75	0.00	20.00	53.33	26.67
N/A	N/A	N/A	N/A	N/A	N/A	59	96.72	0.00	40.68	38.98	20.34
N/A	N/A	N/A	N/A	N/A	N/A	37	94.87	0.00	27.03	62.16	10.81
N/A	N/A	N/A	N/A	N/A	N/A	52	96.30	0.00	44.23	46.15	9.62
N/A	N/A	N/A	N/A	N/A	N/A	N/A	N/A	N/A	N/A	N/A	N/A
N/A	N/A	N/A	N/A	N/A	N/A	N/A	N/A	N/A	N/A	N/A	N/A
N/A	N/A	N/A	N/A	N/A	N/A	***	***	***	***	***	***

## ALABAMA READING AND MATHEMATICS TEST

The Alabama Reading and Mathematics Test provides an assessment of students' mastery of the content contained in the Alabama Course of Study. The Reading and Mathematics Test was given in grades three through eight.

\*\*\* = Less than 10 students tested

N/D = No Data Available

N/A = Not Applicable

N/R = Not Reported

# STUDENT ACADEMIC PERFORMANCE

## Alabama Alternate Assessment 2006

The Alabama Alternate Assessment is designed for students with disabilities whose Individualized Education Program [IEP] team determines that the student will not participate in the regular state assessments.

READING											
SCHOOL						SYSTEM					
		Level 1	Level 2	Level 3	Level 4			Level 1	Level 2	Level 3	Level 4
Number Tested	Percent Tested	Percent Not Meeting Standard	Percent Partially Meeting Standard	Percent Meeting Standard	Percent Exceeding Standard	Number Tested	Percent Tested	Percent Not Meeting Standard	Percent Partially Meeting Standard	Percent Meeting Standard	Percent Exceeding Standard
All Students	***	***	***	***	***	***	***	***	***	***	***

MATHEMATICS											
SCHOOL						SYSTEM					
		Level 1	Level 2	Level 3	Level 4			Level 1	Level 2	Level 3	Level 4
Number Tested	Percent Tested	Percent Not Meeting Standard	Percent Partially Meeting Standard	Percent Meeting Standard	Percent Exceeding Standard	Number Tested	Percent Tested	Percent Not Meeting Standard	Percent Partially Meeting Standard	Percent Meeting Standard	Percent Exceeding Standard
All Students	***	***	***	***	***	***	***	***	***	***	***

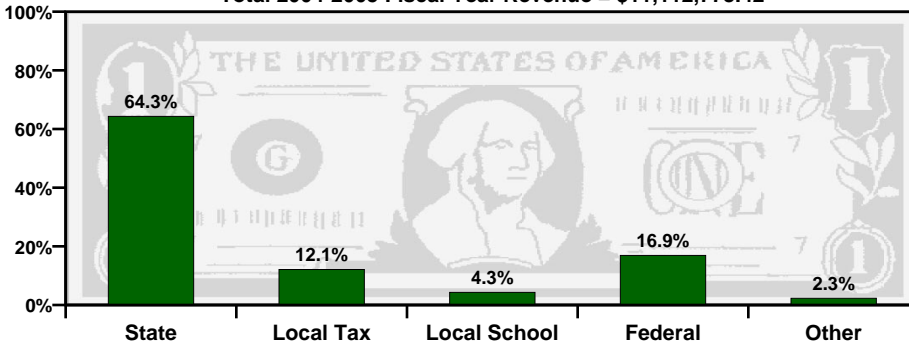
## Alabama Direct Assessment of Writing 2006

Alabama students in grades five, seven, and ten are given the Alabama Direct Assessment of Writing each year to measure their writing skills. This table shows how well students met the performance standard of this test.

	SCHOOL						SYSTEM					
		Level 1	Level 2	Level 3	Level 4			Level 1	Level 2	Level 3	Level 4	
Number Tested	Percent Tested	Percent Not Meeting Standard	Percent Partially Meeting Standard	Percent Meeting Standard	Percent Exceeding Standard	Number Tested	Percent Tested	Percent Not Meeting Standard	Percent Partially Meeting Standard	Percent Meeting Standard	Percent Exceeding Standard	
Grade 5	N/A	N/A	N/A	N/A	N/A	96	96.97	6.25	35.42	55.21	3.13	
Grade 7	N/A	N/A	N/A	N/A	N/A	111	96.52	6.31	33.33	54.05	6.31	
Grade 10	N/A	N/A	N/A	N/A	N/A	97	93.27	3.09	13.40	50.52	32.99	

# TAXPAYERS' REPORT - FISCAL YEAR 2005

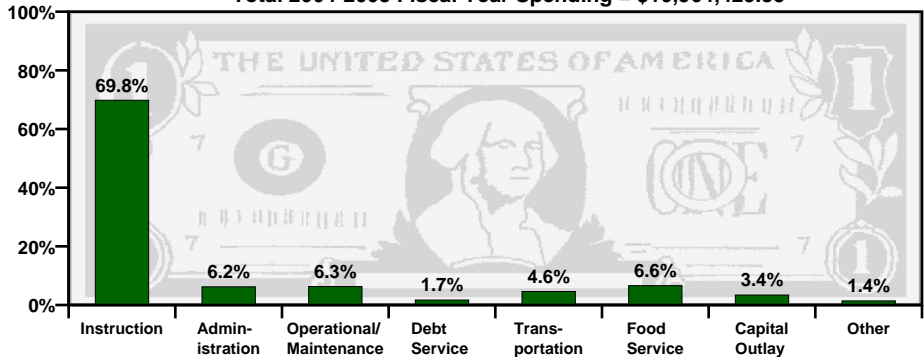
Total 2004-2005 Fiscal Year Revenue = \$11,112,778.42



## Sources of School System Revenues

## School System's Use of Funds

Total 2004-2005 Fiscal Year Spending = \$10,964,429.55



SOURCE of REVENUE	AMOUNT
Local School Revenue	\$478,598.05
Local Capital Projects Revenue	\$0.00
Other Local Revenue (includes local taxes)	\$1,346,952.55
<b>Total Local Revenue</b>	<b>\$1,825,550.60</b>

## Local Revenue Breakdown

This table provides a breakdown of local revenues for fiscal year 2005. The revenue from local school projects / activities and the capital projects fund have been itemized to provide a more complete analysis of local fund sources.

## Mills Equivalent

This is the total amount of revenue collected locally for public school purposes, divided by the value of one regular system mill of ad valorem tax. The state average is 32.87 mills equivalent.

This System	Grade
41.74	A-

## Spending per Student

The table below shows the spending per student for this school system. The letter grade compares the system's per student spending to the state, southeast, and nation.

Year	Amount	State	Southeast	Nation
2003-2004	\$6,132.15	C-	F	D-
2004-2005	\$6,886.14	C+	C-	D

A = Excellent

B = Good

C = Average

D = Poor

F = Fail





